

150 220 22.15
26.25

08-13-005-000
.50A. -004

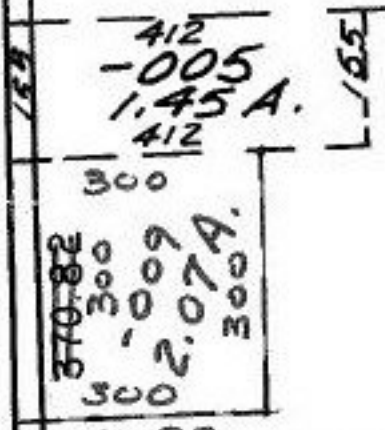
VERMILION RD.
& INTERSECTION OF GARFIELD
3244.68 TO INTERSECTION OF GARFIELD

-001
30.94 A.

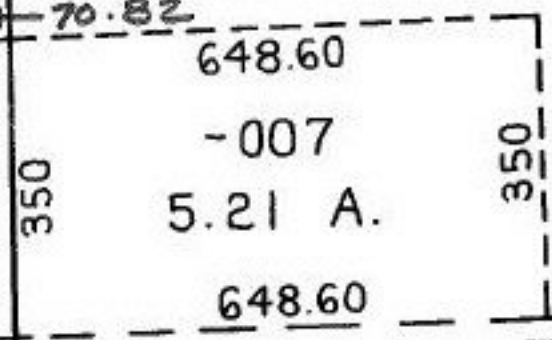
1996

-002
17.33 A.

6 1985.94



~~-010~~
~~-008~~
~~33.34 A.~~
31.27 A.



#00439

APPROVED LORAIN CO. MAP DEPT	004 7.00 A. 1993.8
DATE	5-23-2000
PAGE	8-G
BY	<i>Forbes</i>
#	00439

C

-001