

#00430

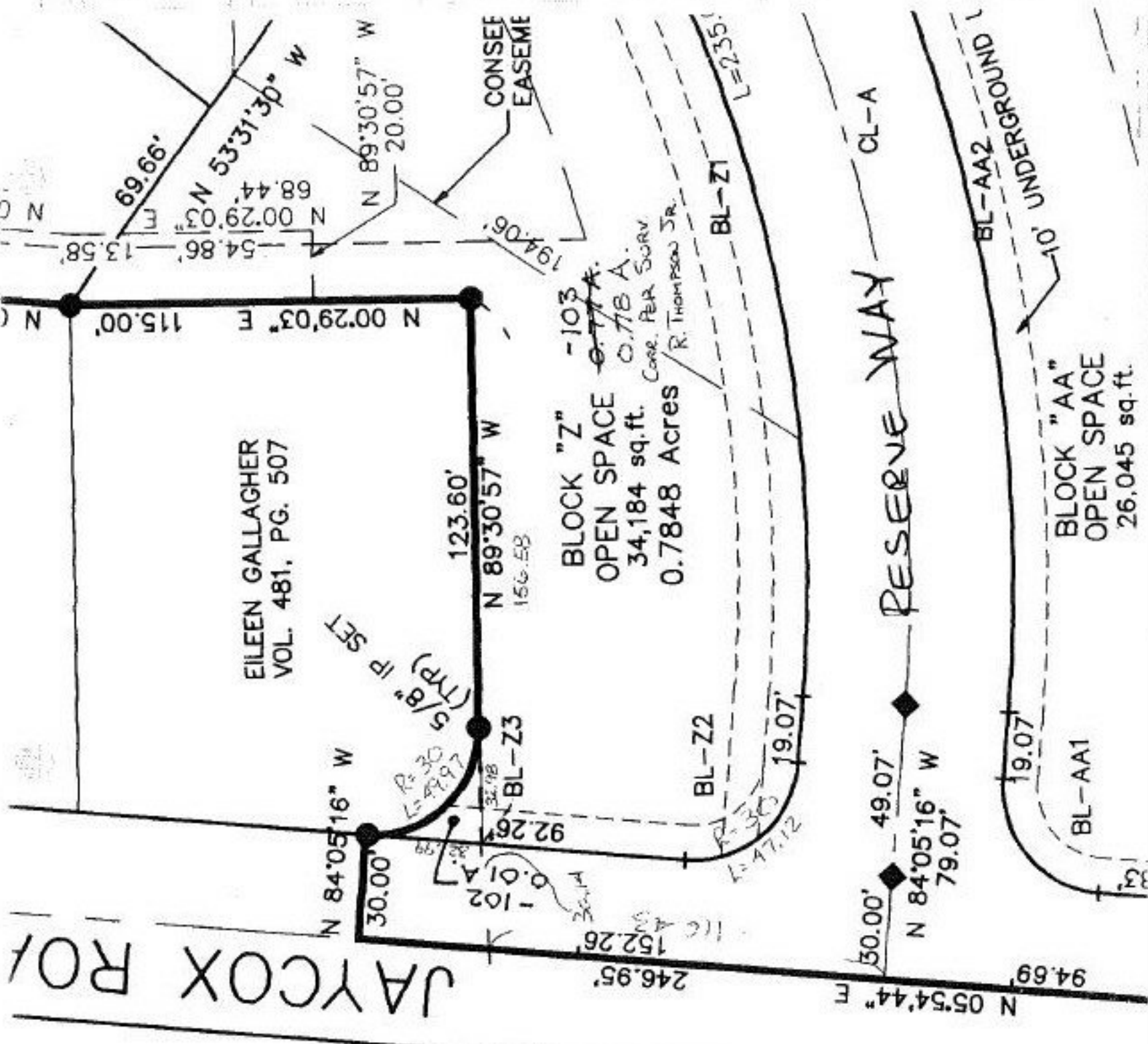
APPROVED
CORAIN CO.
MAP DEPT.
DATE 8/21/00
PROJECT 400-02A-B
BY T. SPILLMAN
NO. 00430

Pr. REF.

PV. 62 PAVES

SCALE  
40' = 1"

JAYCOX ROAD



EILEEN GALLAGHER  
VOL. 481, PG. 507

BLOCK "Z" -103  
OPEN SPACE  
34,184 sq. ft.  
0.7848 Acres  
CORR. PER SURV  
R. THOMPSON JR.

RESERVE WAY  
CL-A

BLOCK "AA"  
OPEN SPACE  
26,045 sq. ft.