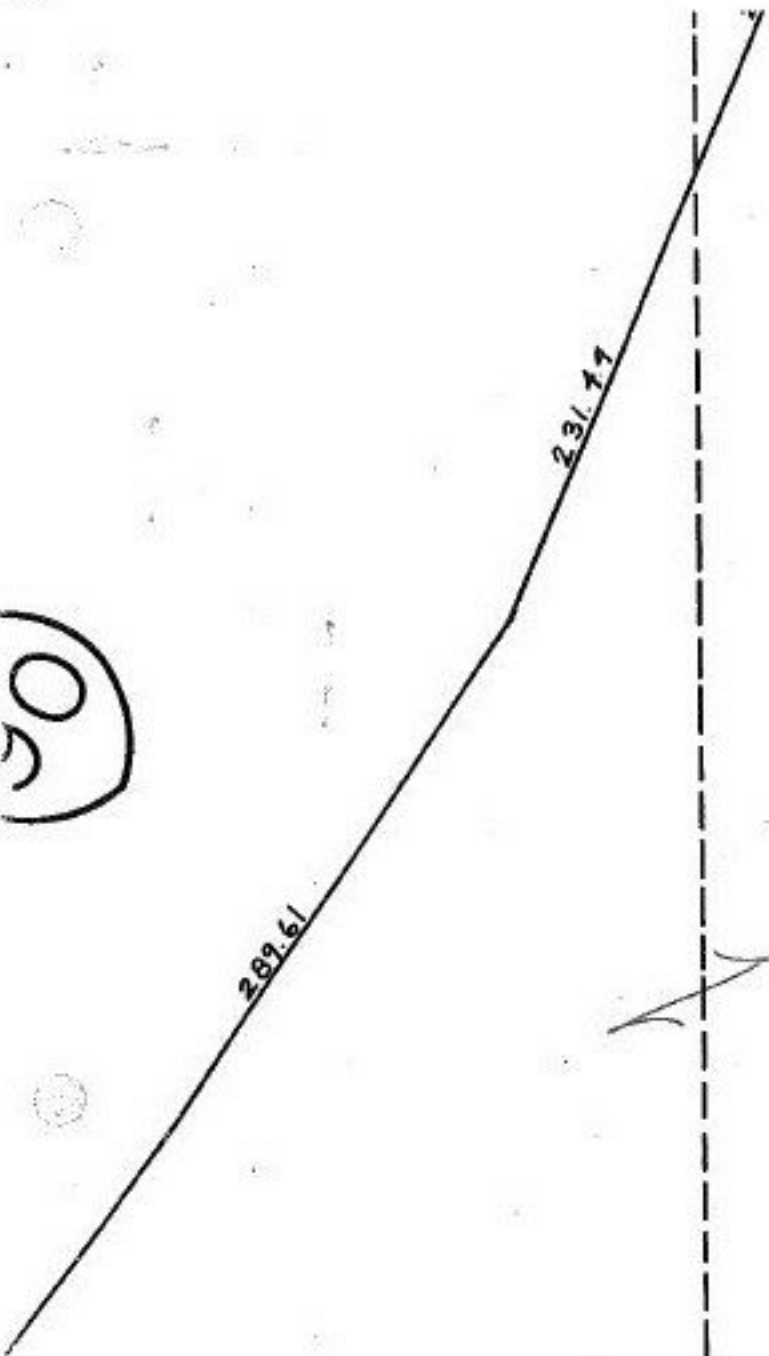


#00 406

APPROVED LORAIN CO. MAP DEPT
DATE 4-19-2000
PAGE 3-00-011-A
BY <i>J. Gallant</i>
00406

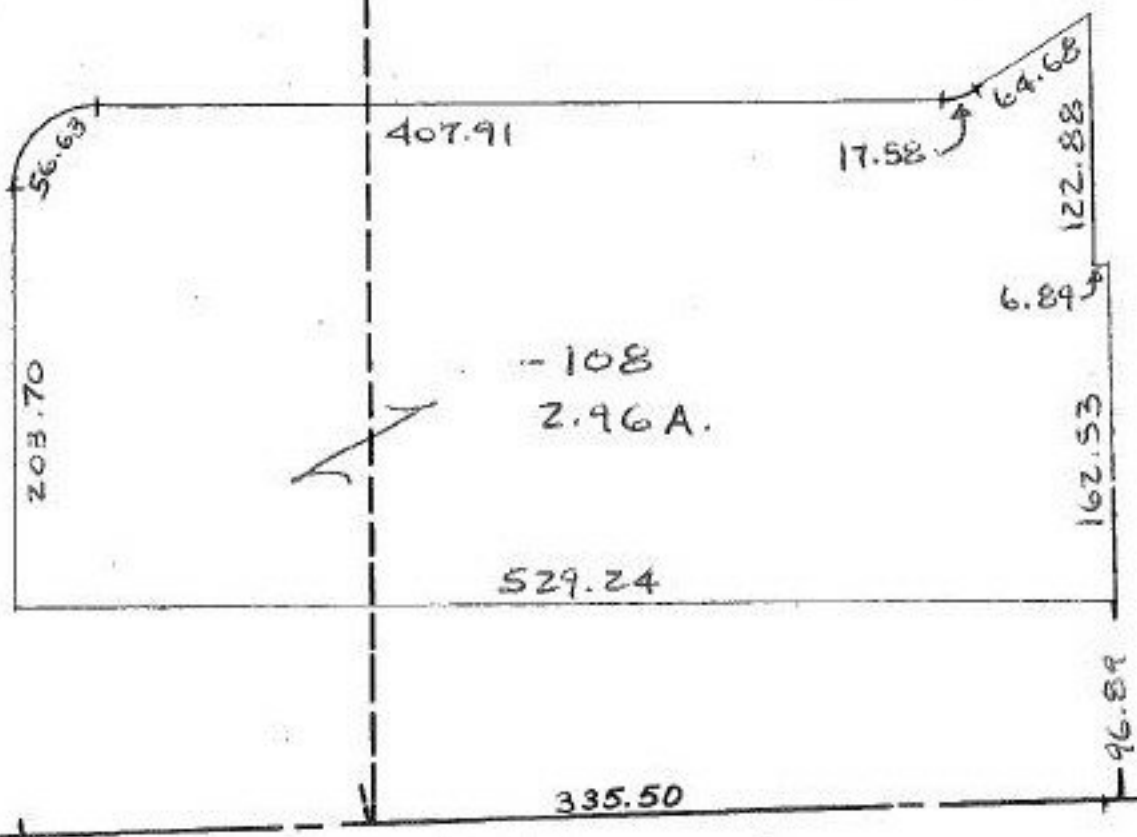
(30)



-109
30.09 A.

-029
27.64 A.

~~047~~
~~5.41 A.~~



-108
2.96 A.

738.66

335.50

SEE 6-15