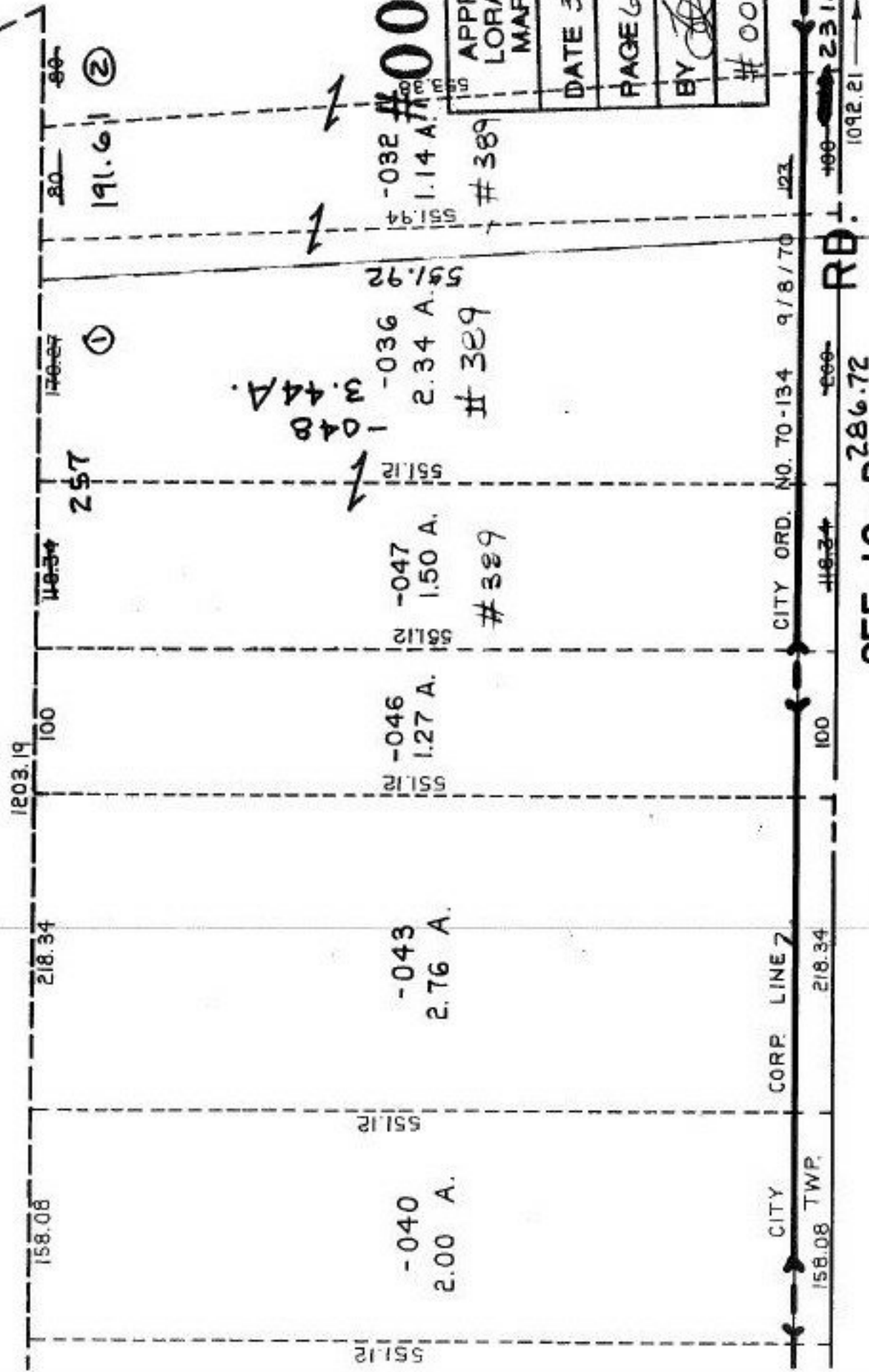


301.83



1203.19

158.08

218.34

100

148.34

176.27

80

80

-040
2.00 A.

551.12

-043
2.76 A.

551.12

-046
1.27 A.

551.12

-047
1.50 A.

551.12

-048
3.44 A.

551.12

-036
2.34 A.

551.92

-032
1.14 A.

551.94

257

①

②

#00389

APPROVED LORAIN CO. MAP DEPT
DATE 3-29-2000
PAGE 6-130
BY <i>[Signature]</i>
00389

389

389

389

CITY
158.08 TWP.

CORP. LINE 2

218.34

100

CITY ORD. NO. 70-134 9/8/70

148.34

100

RD.

1092.21

231.61

SEE 10-B 286.72