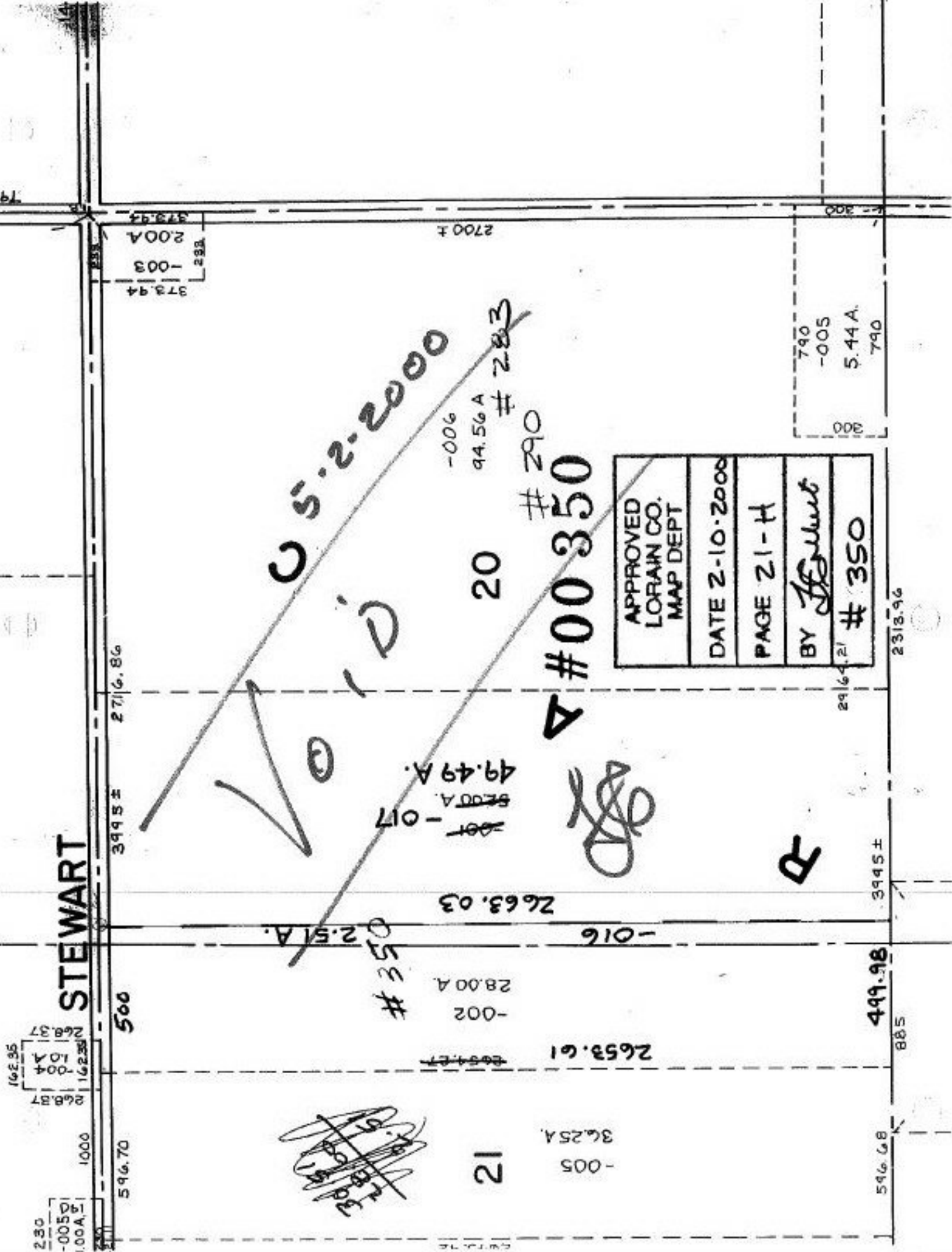


STEWART



373.94
-003
200A
233

3995 ± 2716.86

500

596.70

0 5'-2-2000

-006
94.56A # 283

20

290

△ #00350

APPROVED LORAIN CO. MAP DEPT
DATE 2-10-2000
PAGE 21-H
BY <i>J. E. Hunt</i>
350

790
-005
5.44A
790
300

49.49A.
ST00A
-017

2663.03

350
2.51A.

-002
28.00A

2653.61

2653.61

36.25A.

21

-005

3945 ±

449.98

546.68

2313.96

885

162.35
268.37
104
104
162.35
268.37

1000

2.30
-005D
1.00A.1