

14-00-033-000-004 & 14-00-028-000-007

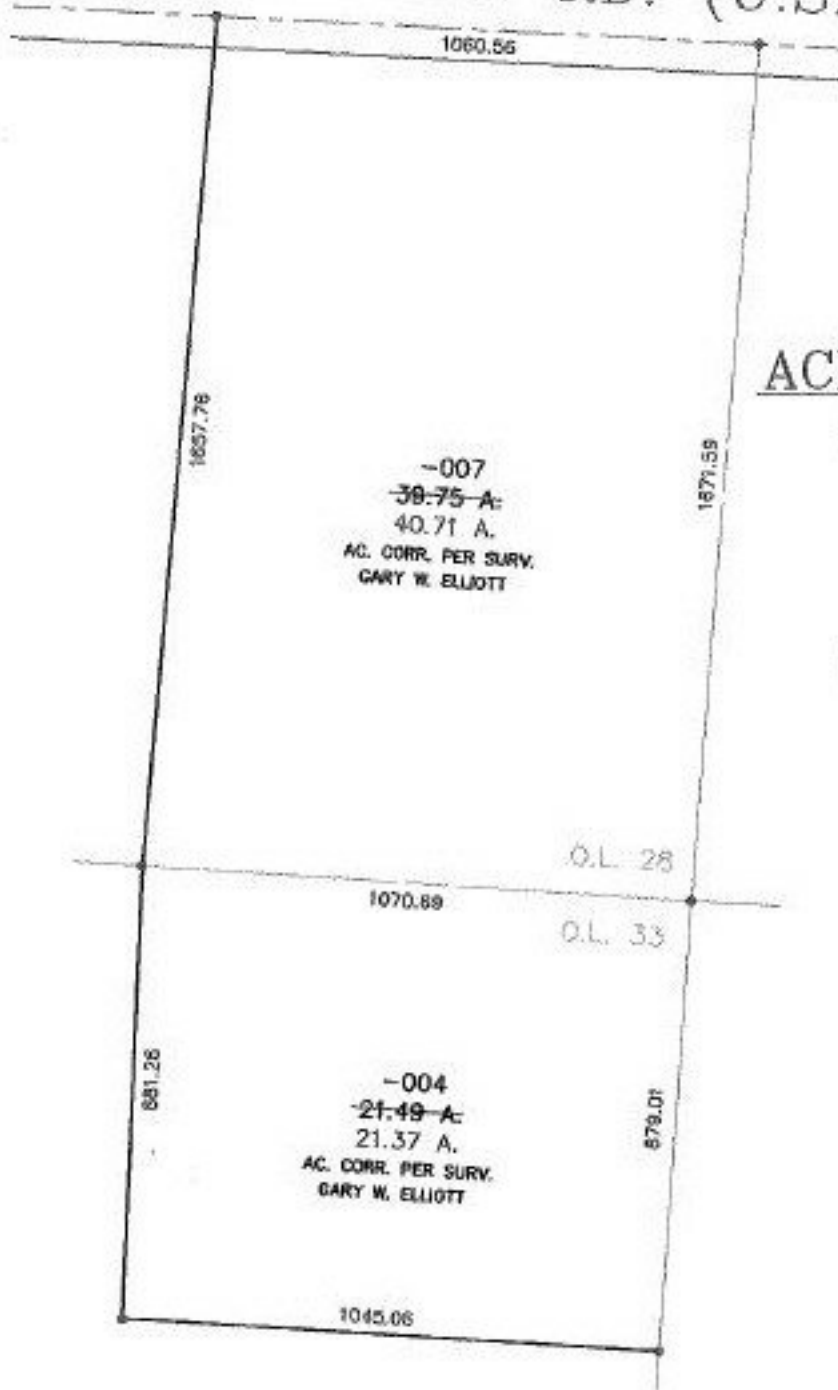
XX-XX-XXX-XXX-XXX

CL OF U.S. 20 & N.W. CORNER OF O.L. 28

NO. 00334-D



NORWALK-KIPTON RD. (U.S. 20)



-007
~~39.75 A.~~
40.71 A.
AC. CORR. PER SURV.
GARY W. ELLIOTT

ACREAGE CORRECTION

14-00-028-000-007

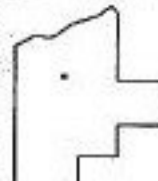
~~39.75 A.~~
40.71 A.

14-00-033-000-004

~~21.49 A.~~
21.37 A.

-004
~~21.49 A.~~
21.37 A.
AC. CORR. PER SURV.
GARY W. ELLIOTT

O.L. 28
O.L. 33



SPLITS/DEEDS PROCESSED
LORAIN COUNTY TAX MAP DEPARTMENT
226 MIDDLE AVE. ELYRIA, OHIO

SURVEYED BY: GARY W. ELLIOTT
CLOSURE: 0.01 : 10,000
MAP PAGE(S): 14-B
APPROVED BY: I. SPILLMAN DATE: 04/21/00
SCALE: 1" = 400' PRIOR INSTRUMENT: OR 953/362