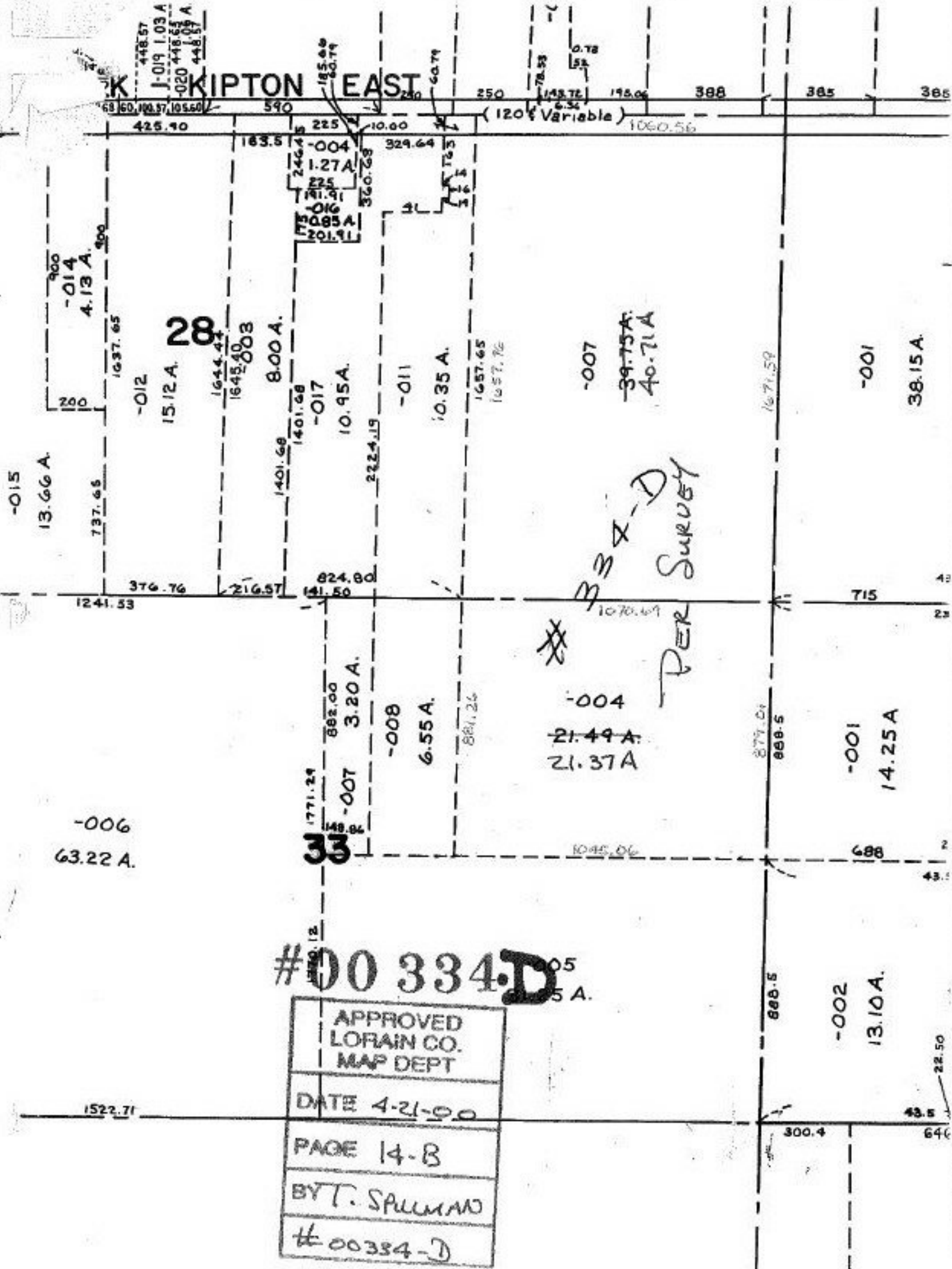


K  
 448.57  
 J-019 1.03 A  
 -020 448.57  
 448.57

KIPTON EAST



#00334-D<sup>05</sup><sub>5 A.</sub>

APPROVED LORAIN CO. MAP DEPT
DATE 4-21-00
PAGE 14-B
BY T. SPILLMAN
#00334-D

1522.71

300.4

43.5  
640

-002  
13.10A.

-001  
14.25A

-004  
21.49A  
21.37A

-008  
6.55A.

33  
1771.24  
145.82  
-007  
3.20A.

-006  
63.22A.

M 3 X D  
PER SURVEY

-007  
39.75A.  
40.71A

-001  
38.15A.

28  
15.12A.

8.00A.  
1401.68  
1401.68

-015  
13.66A.

-014  
4.13A.

-012

-017  
10.95A.

-011  
10.35A.

1657.65  
1657.72

1241.53

376.76

216.57

824.80  
141.50

1070.69

715

43  
23

1045.06

879.04  
888.5

688

49.1

888.5

22.50

425.40

183.5

225  
1.27A.  
246.45  
225  
241.91  
201.91  
2085A.  
300.23

10.00  
329.64

250

195.06

388

385

385

(120 Variable)

1060.56

1637.65

1644.44

1645.40

1401.68

1401.68

222.419

1657.65

1657.72

1671.59

1671.59

1671.59

1671.59

1671.59

1671.59

1671.59

1671.59

1671.59

1671.59

1671.59

1671.59

1671.59