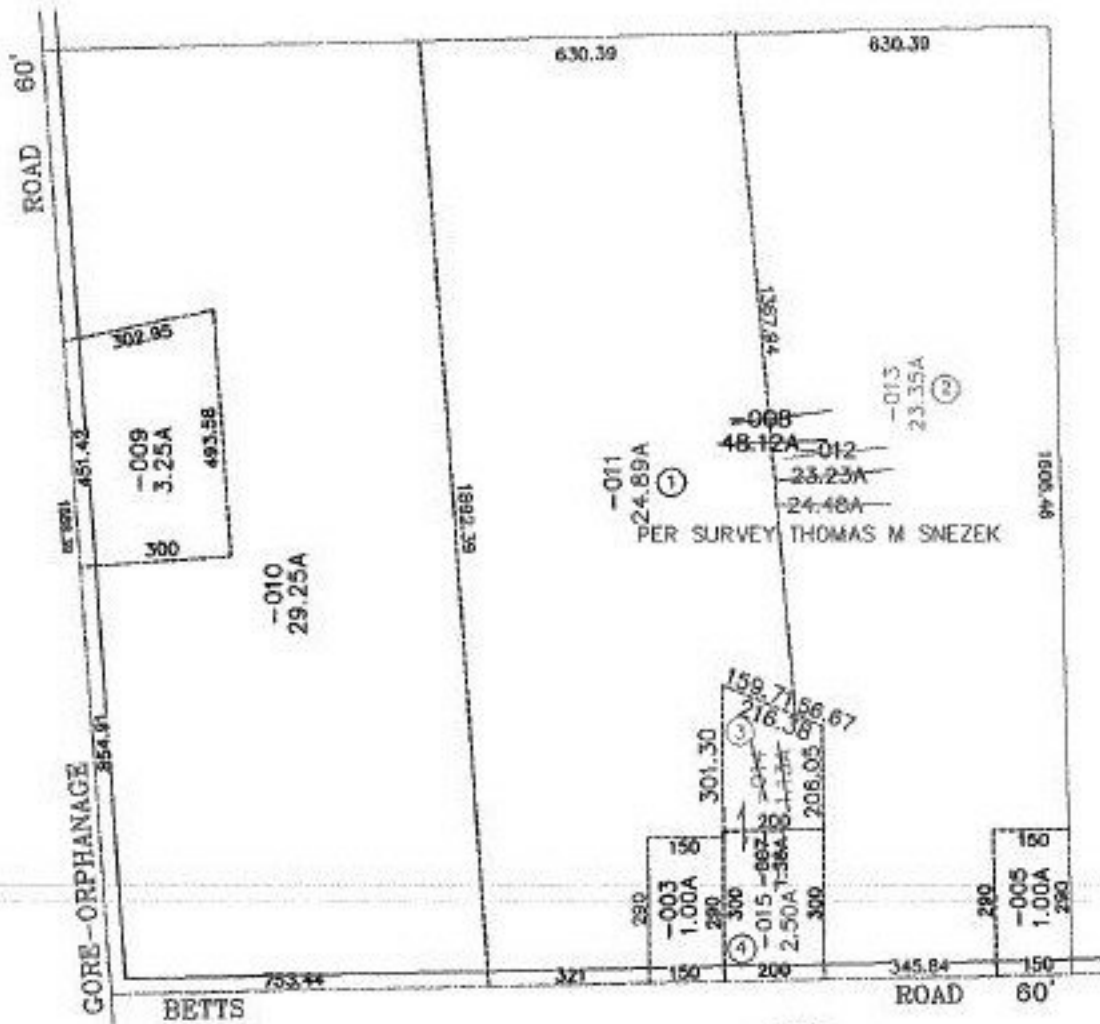


PARENT PARCEL: 13-09-036-000-007 & 008

CHILD PARCEL: 13-09-036-000-011, 012, 013, 014, 015.

STARTING POINT: C/Ls OF GORE-ORPHANAGR ROAD & BETTS ROAD

NO. 00319



SPLITS/DEEDS PROCESSED
LORAIN COUNTY TAX MAP DEPARTMENT
 226 MIDDLE AVE. ELYRIA, OHIO

SURVEYED BY: THOMAS M SNEZEK
 CLOSURE: 0.02 / 10.000
 MAP PAGE(S): 13-E
 APPROVED BY: F. COLBERT DATE: 1/3/2000
 SCALE: 1" = 400' PRIOR INSTRUMENT: 1417/316