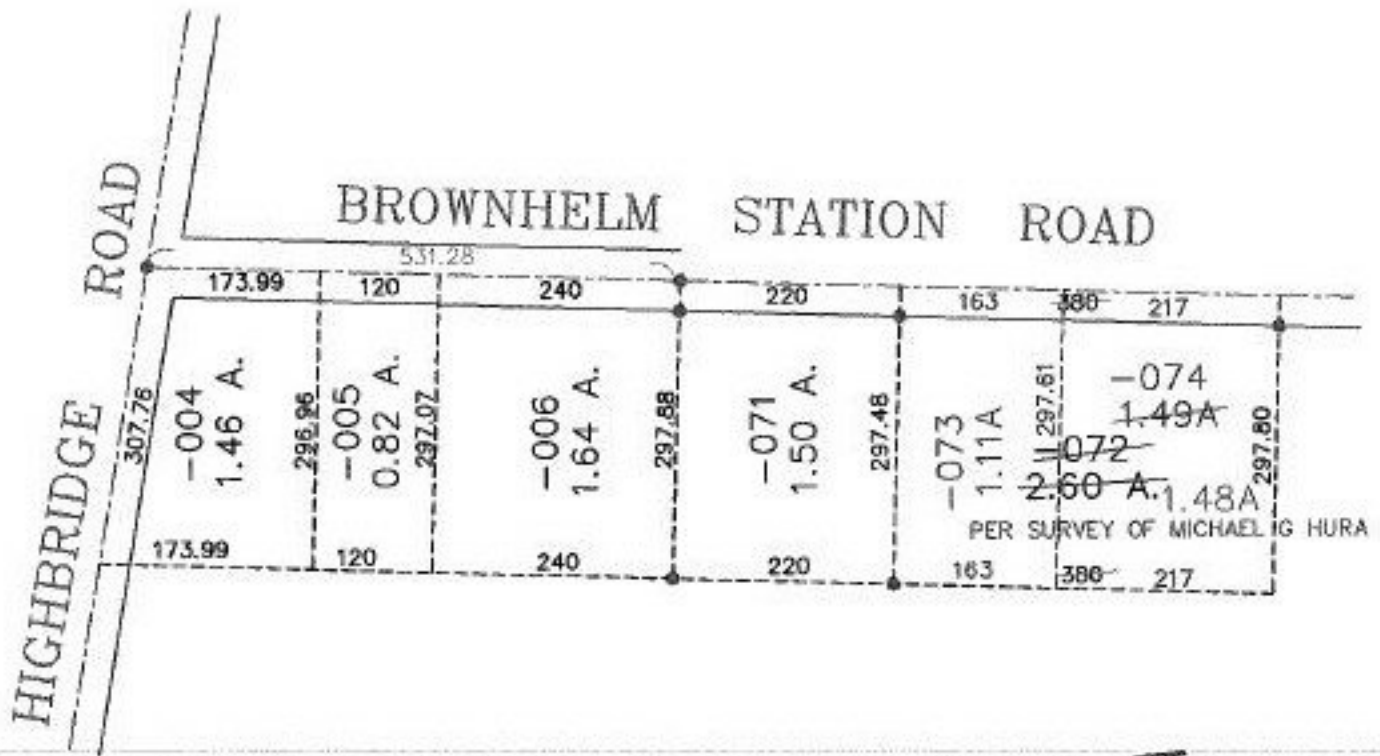


PARENT PARCEL: 01-00-018-000-072

CHILD PARCEL: 01-00-018-000-073, 074

STARTING POINT: INT CL HIGHBRIDGE ROAD AND BROWNHELM STATION ROAD

NO. 00318



TS
3-29-00



SPLITS/DEEDS PROCESSED
LORAIN COUNTY TAX MAP DEPARTMENT
226 MIDDLE AVE. ELYRIA, OHIO

SURVEYED BY: M.G. HURA
CLOSURE: 0.13 : 10.000
MAP PAGE(S): 01-00-018-A
APPROVED BY: F. COLBERT DATE: 12/30/99
SCALE: 1" = 200' PRIOR INSTRUMENT: #980517753