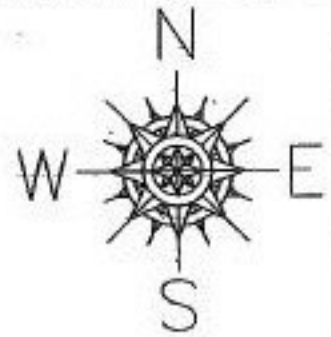


PARENT PARCEL: 01-00-013-000-037, 040

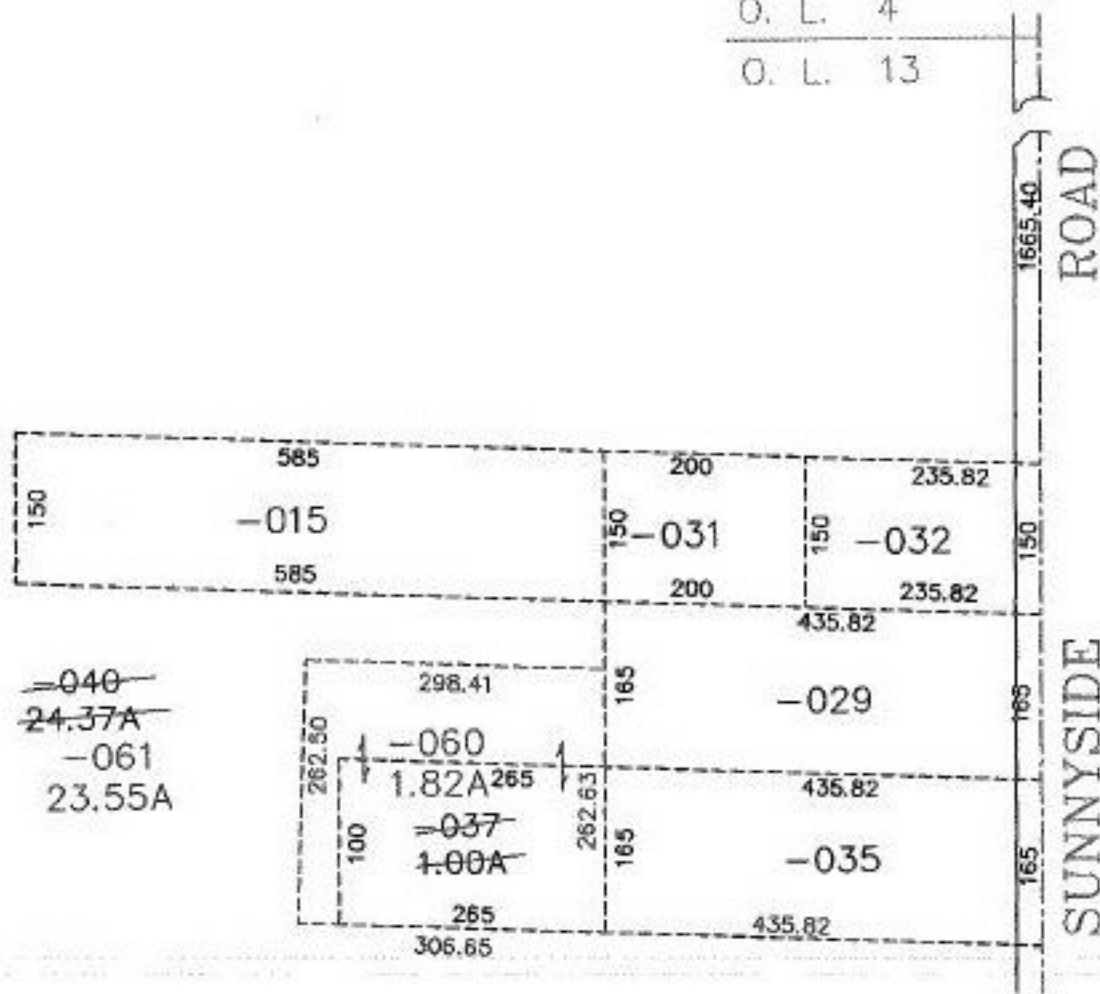
CHILD PARCEL: 01-00-013-000-060, 061

STARTING POINT: C/L SUNNYSIDE ROAD & N. LINE O.L. 13

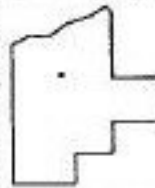
NO. 00313



O. L. 4
O. L. 13



~~=040~~
~~24.37A~~
~~-061~~
23.55A



SPLITS/DEEDS PROCESSED
LORAIN COUNTY TAX MAP DEPARTMENT
226 MIDDLE AVE. ELYRIA, OHIO

SURVEYED BY: M. G. HIRO
CLOSURE: 0.03 / 10,000
MAP PAGE(S): 1-B
APPROVED BY: F. COLBERT DATE: 1/24/2000
SCALE: 1" = 200' PRIOR INSTRUMENT: 1083/810 06/284/802