

PARENT PARCEL: PARTIAL STREET VACATION OF ELDER ST.

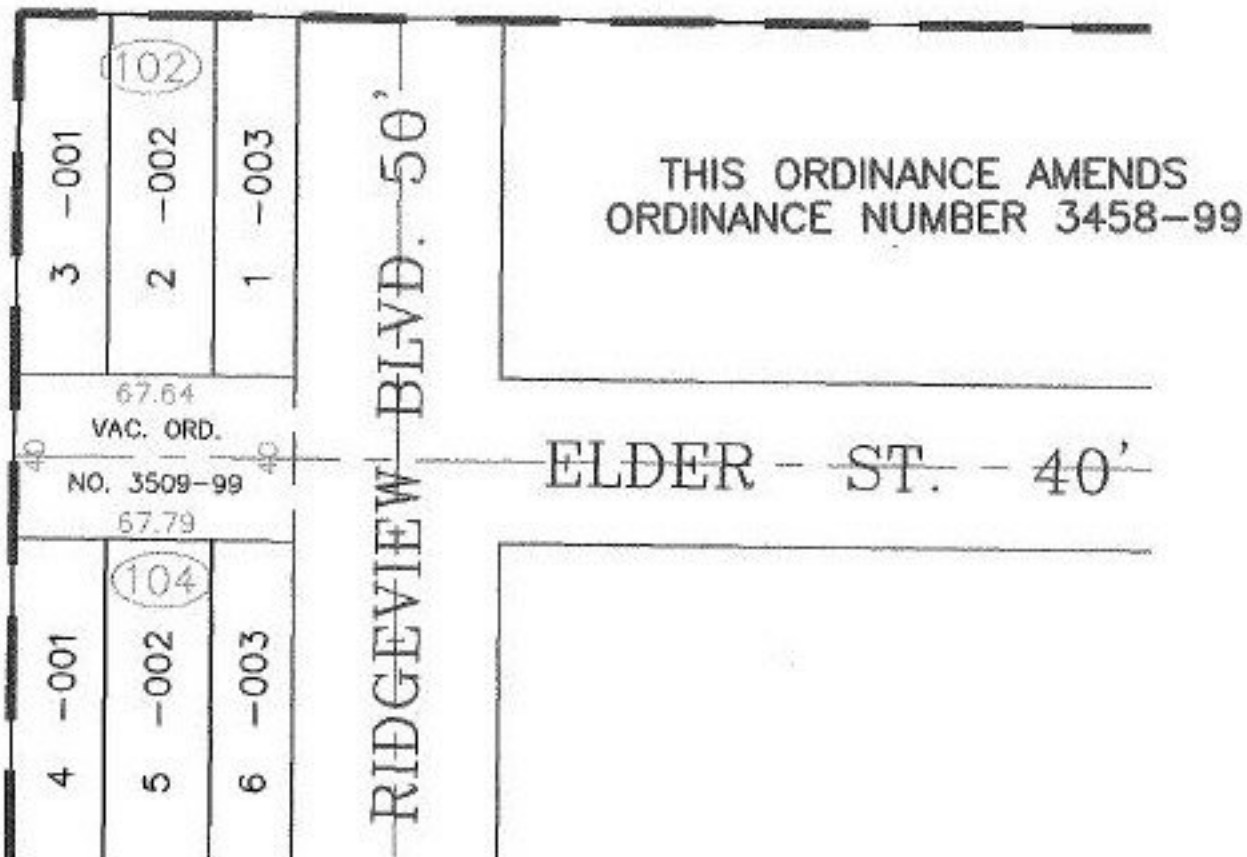
CHILD PARCEL: XXXXXXXXXXXX

STARTING POINT: INTERSECTION OF THE SOUTH R.O.W. OF ELDER ST. & WEST R.O.W. OF RIDGEVIEW BLVD.

NO. 00301-V

# VACATION

STREET VACATION  
PART OF ELDER ST.  
ORD. NO. 3509-99  
PASSED 11/1/99



CENTER RIDGE HEIGHTS SUBDIVISION

*TS  
A-4-00*



**SPLITS/DEEDS PROCESSED**  
LORAIN COUNTY TAX MAP DEPARTMENT  
226 MIDDLE AVE. ELYRIA, OHIO

SURVEYED BY:	DANE HAPONEK
CLOSURE:	0.06 : 10.000
MAP PAGE(S):	07-00-020-B
APPROVED BY:	I. SPILLMAN DATE: 08/27/99
SCALE:	1" = 50' PRIOR INSTRUMENT: NONE