

PARENT PARCEL: 06-26-065-000-002

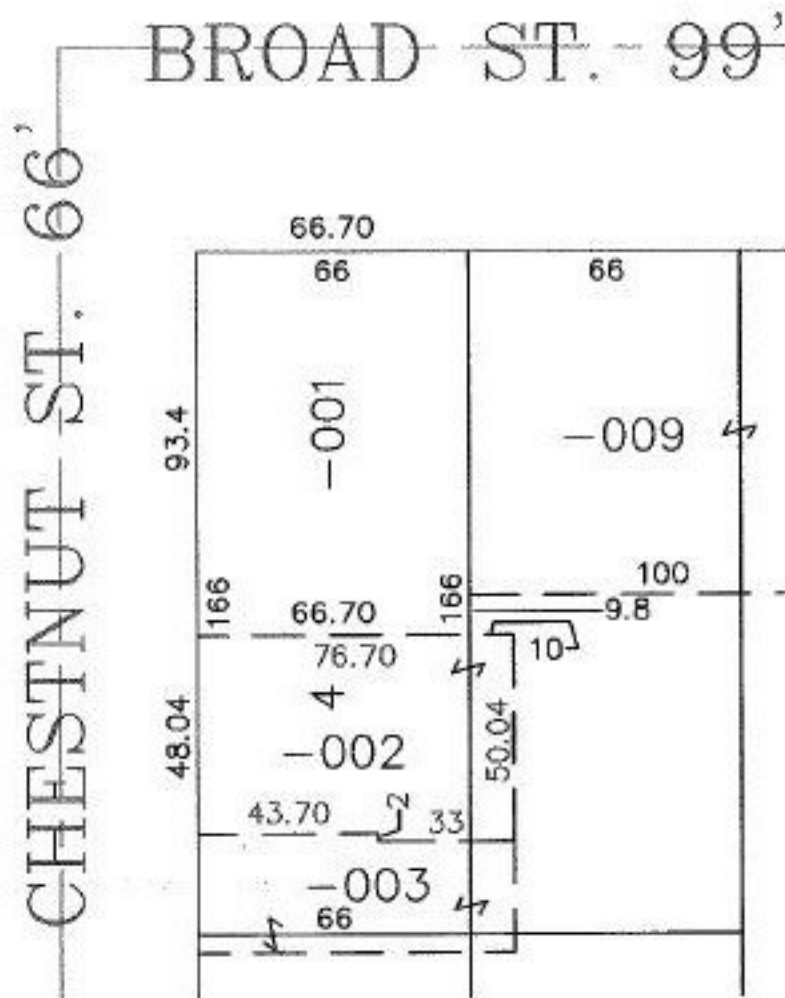
CHILD PARCEL: XXXXXXXXXXXX

STARTING POINT: INTERSECTION OF THE SOUTH LINE OF BROAD ST. & THE WEST LINE OF CHESTNUT ST.

NO. 00281-D

MAP CORRECTION

06-26-065-000-002



SPLITS/DEEDS PROCESSED
 LORAIN COUNTY TAX MAP DEPARTMENT
 226 MIDDLE AVE. ELYRIA, OHIO

SURVEYED BY: NONE
 CLOSURE: CAN'T RUN
 MAP PAGE(S): 6-119
 APPROVED BY: J. SPILLMAN DATE: 02/18/00
 SCALE: 1" = 50' PRIOR INSTRUMENT: DV 372/407