

PARENT PARCEL: 16-00-018-102-021, 022

CHILD PARCEL: 16-00-018-102-021, 022

STARTING POINT: P.K. NAIL IN ANGLE POINTIN C/L MEDINA-ELYRIA ROAD

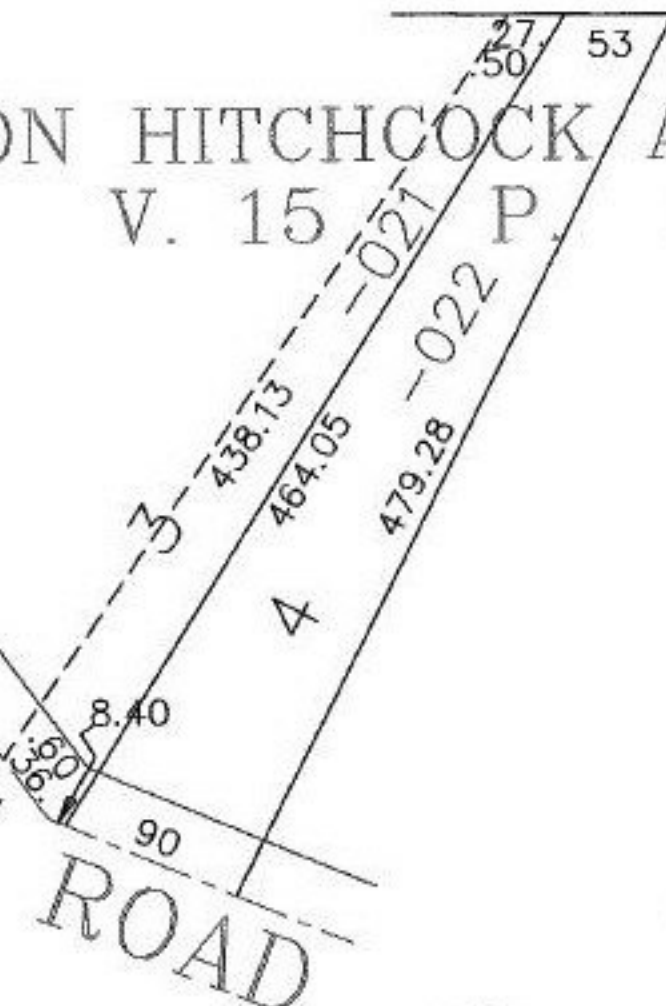
NO. 00273-D



1-10-00
RM

MEDINA-ELYRIA ROAD

NELSON HITCHCOCK ALLOT.
V. 15 P. 19



15
3-28-00

60'

ADD
DIMS.

SPLITS/DEEDS PROCESSED

LORAIN COUNTY TAX MAP DEPARTMENT
226 MIDDLE AVE. ELYRIA, OHIO

SURVEYED BY: DANIEL J COOK

CLOSURE: 0.08 / 10,000

MAP PAGE(S): 16-00-018-A

APPROVED BY: F. COLBERT DATE: 1/10/2000

SCALE: 1" = 100' PRIOR INSTRUMENT: DV XXXX/XXX