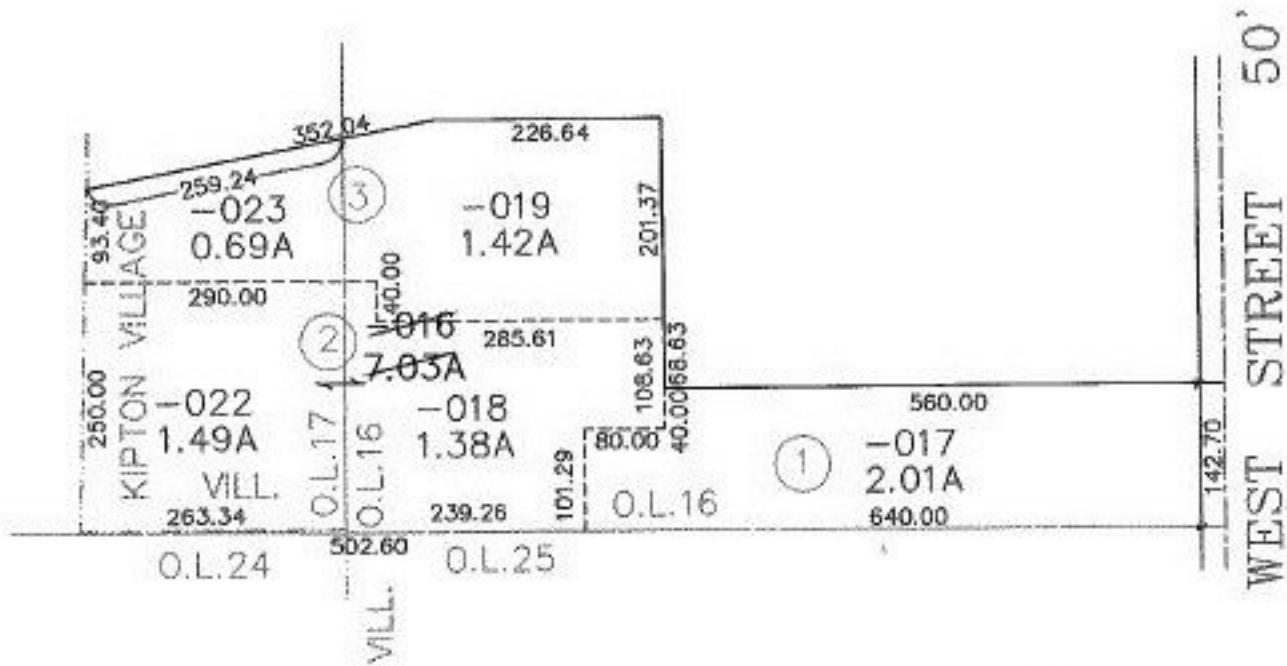


PARENT PARCEL: 13-11-016-105-016

CHILD PARCEL: 13-11-016-105-017, 018, 019, 13-11-017-000-022, 023

STARTING POINT: SW CORNER OF O.L. 16, TRACT 11

NO. 00264



*AS
2-21-00*



SPLITS/DEEDS PROCESSED
LORAIN COUNTY TAX MAP DEPARTMENT
226 MIDDLE AVE. ELYRIA, OHIO

SURVEYED BY: BRIAN P. McCARTNEY
CLOSURE: 0.04/ 10,000
MAP PAGE(S): 13-11-016 & 13-11-017
APPROVED BY: F. COLBERT DATE: 11/24/99
SCALE: 1" = 200' PRIOR INSTRUMENT: DV 949/667