

PARENT PARCEL: 06-26-082-000-009

CHILD PARCEL: XXXXXXXXXXXX

STARTING POINT: THE WEST LINE OF EAST AVE. & THE NORTH LINE OF BROAD ST.

NO. 00248-D

# FRONTAGE & DEPTH CORRECTION



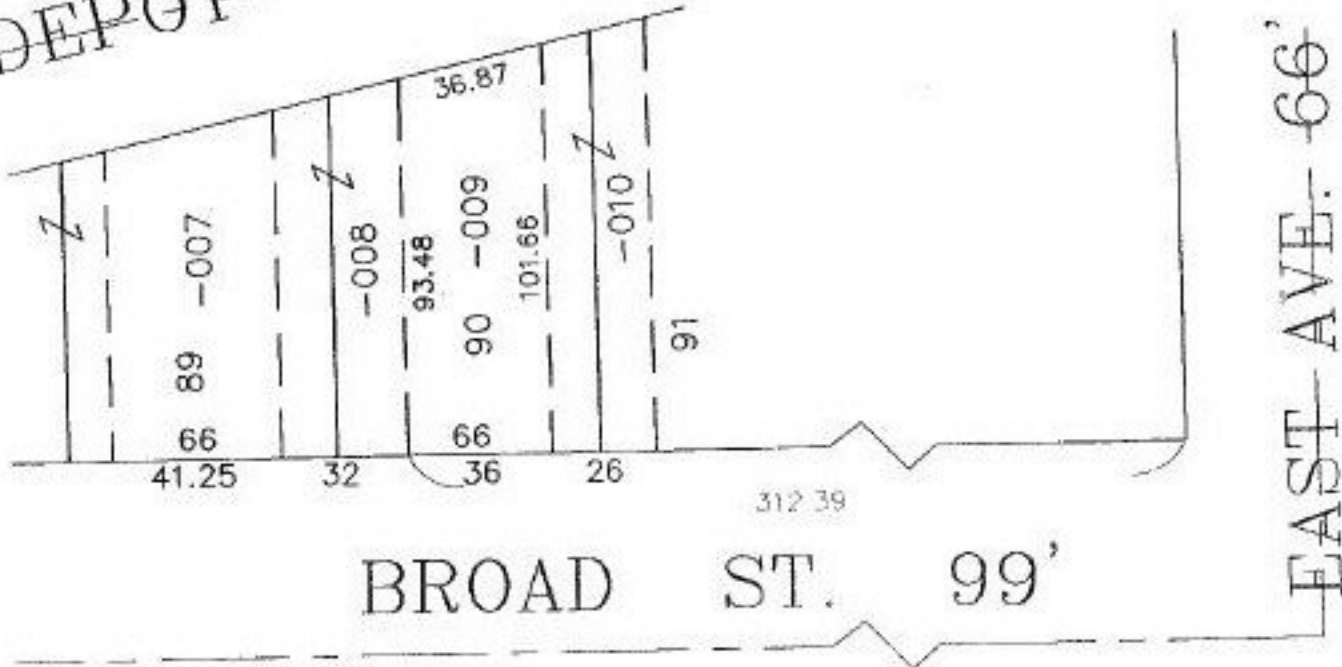
06-26-082-000-009

~~36 X 100~~

36 X 101.66

CORR. PER SURV.  
DOUGLAS H. MOSLEY

~~DEPOT ST. 60'~~



~~EAST AVE. 66'~~



**SPLITS/DEEDS PROCESSED**  
LORAIN COUNTY TAX MAP DEPARTMENT  
226 MIDDLE AVE. ELYRIA, OHIO

SURVEYED BY: DOUGLAS H. MOSLEY  
CLOSURE: 0.36 : 10,000  
MAP PAGE(S): 6-120  
APPROVED BY: T. SPILLMAN DATE: 12/09/99  
SCALE: 1" = 50' PRIOR INSTRUMENT: DV 918/435