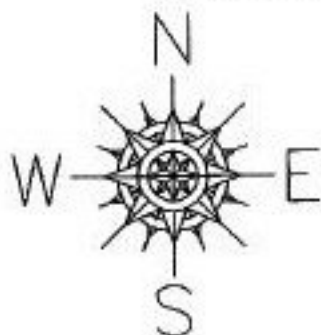


PARENT PARCEL: 15-00-020-000-022

CHILD PARCEL: 15-00-020-000-052 & -053

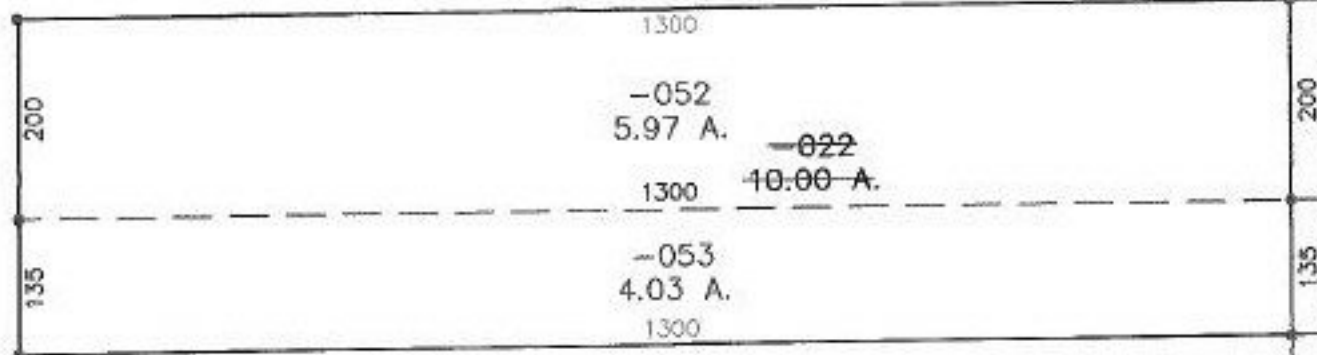
STARTING POINT: MON. BOX, CL. OF KIPTON NICKLE PLATE RD. &
CL. OF NICKLE PLATE DIAGONAL RD.

NO. 00245

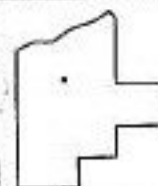


KIPTON NICKLE PLATE RD.

NICKLE PLATE DIAGONAL RD. 60'



VS
2-21-00



SPLITS/DEEDS PROCESSED
LORAIN COUNTY TAX MAP DEPARTMENT
226 MIDDLE AVE. ELYRIA, OHIO

SURVEYED BY: RODGER G. SIMON

CLOSURE: 0.00 : 10.000

MAP PAGE(S): 15-00-020-B

APPROVED BY: T. SPILLMAN DATE: 10/21/99

SCALE: 1" = 200' PRIOR INSTRUMENT: OR 342/506