

PARENT PARCEL: 15-00-046-101-052 & -064

CHILD PARCEL: 15-00-046-101-260

STARTING POINT: EAST LINE OF CHURCH ST. & S.W. CORNER OF LAND CONVEYED TO TALLMAN

NO. 00245-X

COMBINATION

15-00-046-101-052

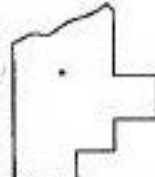
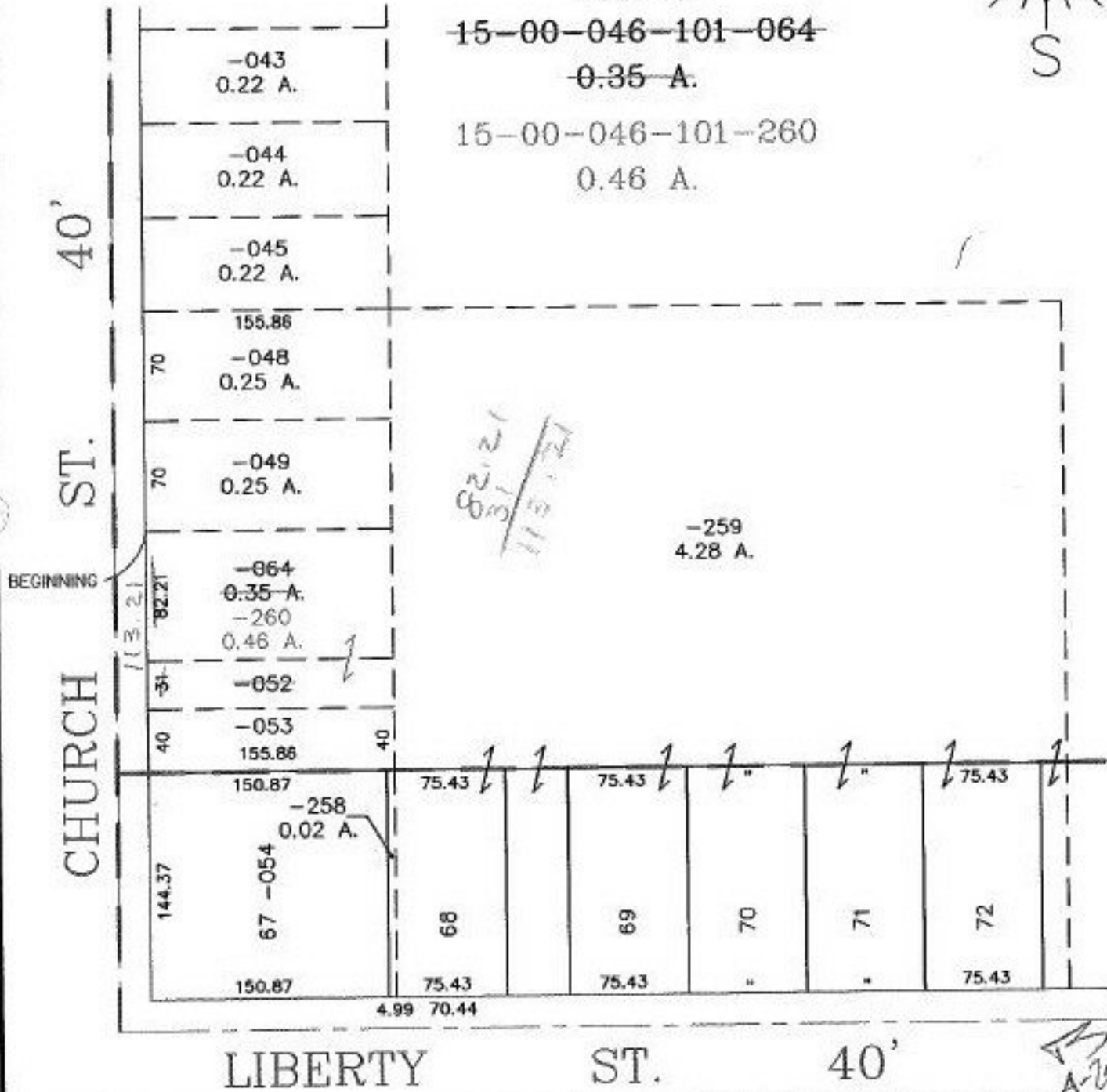
0.11 A.

15-00-046-101-064

0.35 A.

15-00-046-101-260

0.46 A.



SPLITS/DEEDS PROCESSED

LORAIN COUNTY TAX MAP DEPARTMENT
226 MIDDLE AVE. ELYRIA, OHIO

SURVEYED BY: NONE

CLOSURE: CAN'T RUN

MAP PAGE(S): 15-00-046-A TJS 02/01/00

APPROVED BY: F. COLBERT DATE: 12/01/99

SCALE: 1" = 100' PRIOR INSTRUMENT: DV 1262/682