

PARENT PARCEL: XX-XX-XXX-XXX-XXX

CHILD PARCEL: XX-XX-XXX-XXX-XXX

STARTING POINT: XXXXXX

NO. 00236-X

CERTIFICATE OF CORRECTION

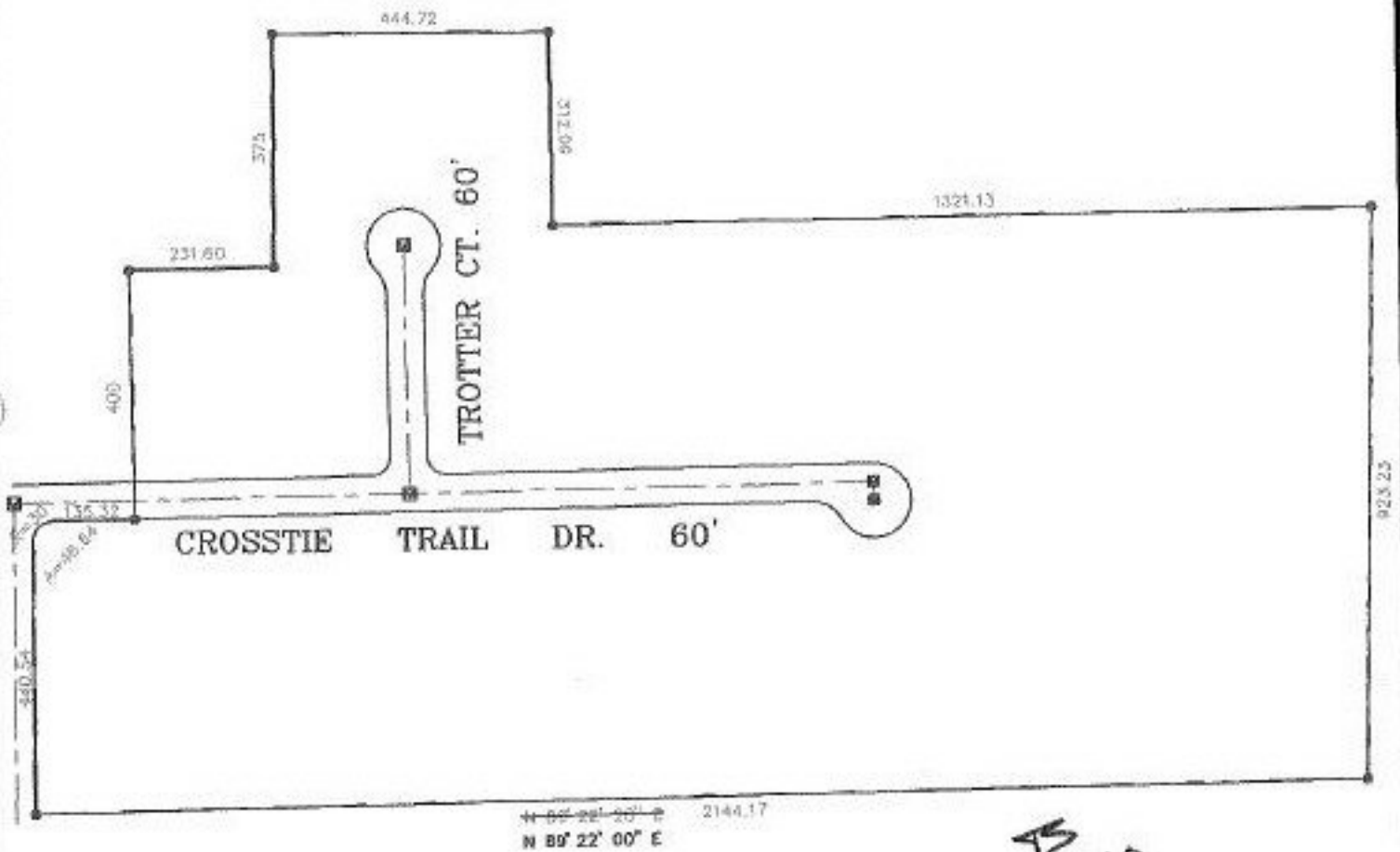
~~N89° 22' 20" E~~

N89° 22' 00" E

REDFERN FARMS SUB. NO. 2

V. 61 PG. 3

DOC. # 990567650



AS
4-5-00



SPLITS/DEEDS PROCESSED
 LORAIN COUNTY TAX MAP DEPARTMENT
 226 MIDDLE AVE. ELYRIA, OHIO

SURVEYED BY: ERIC J. NELSON
 CLOSURE: 0.01 : 10,000
 MAP PAGE(S): 12-00-019-A & B
 APPROVED BY: I. SPILLMAN DATE: 12/21/99
 SCALE: 1" = 300' PRIOR INSTRUMENT: 990567650