

PARENT PARCEL: 06-24-092-000-003

CHILD PARCEL: XX-XX-XXX-XXX-XXX

STARTING POINT: PT. OF S\ 32 & PT. S\ 33 IN THE BRONSON'S SECOND ADDITION

NO. 00235-A



FRONTAGE & DEPTH CORR.

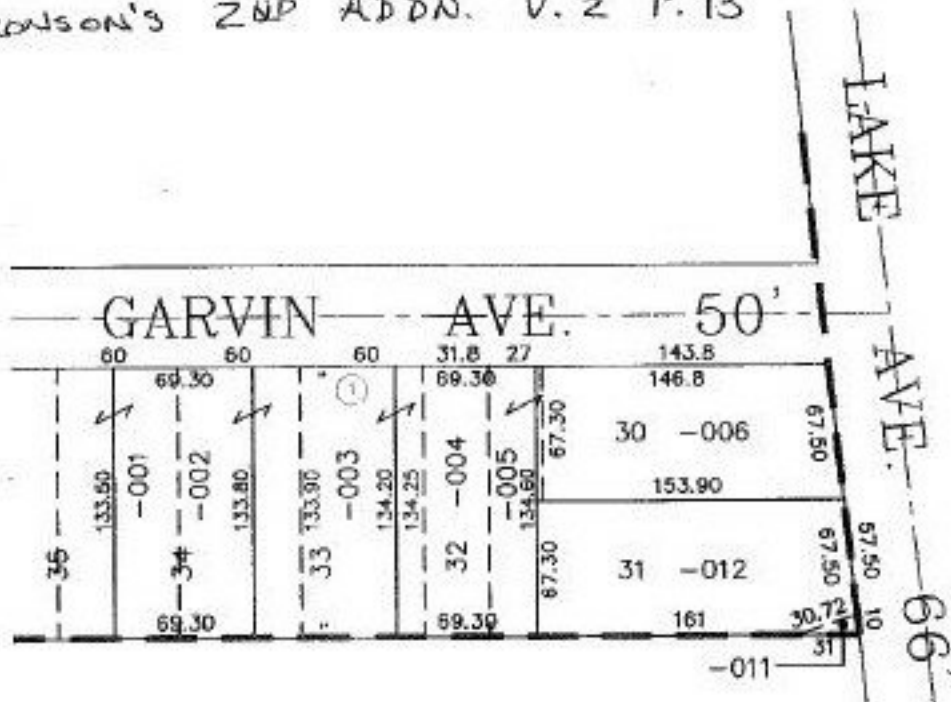
06-24-092-000-003

~~59.50 X 134~~

60 X 134.25

CORR. PER DEED

BRONSON'S 2ND ADDN. V. 2 P. 13



SPLITS/DEEDS PROCESSED

LORAIN COUNTY TAX MAP DEPARTMENT
226 MIDDLE AVE. ELYRIA, OHIO

SURVEYED BY: NONE

CLOSURE: CAN'T RUN

MAP PAGE(S): 6-99

APPROVED BY: I. SPILLMAN DATE: 12/10/99

SCALE: 1" = 100' PRIOR INSTRUMENT: OR 697/371