

PARENT PARCEL: 04-00-018-136-047

CHILD PARCEL: XXXXXXXXXXXX

STARTING POINT: S.W. CORNER OF S/L 193 IN AVON LAKE SUBDIVISION

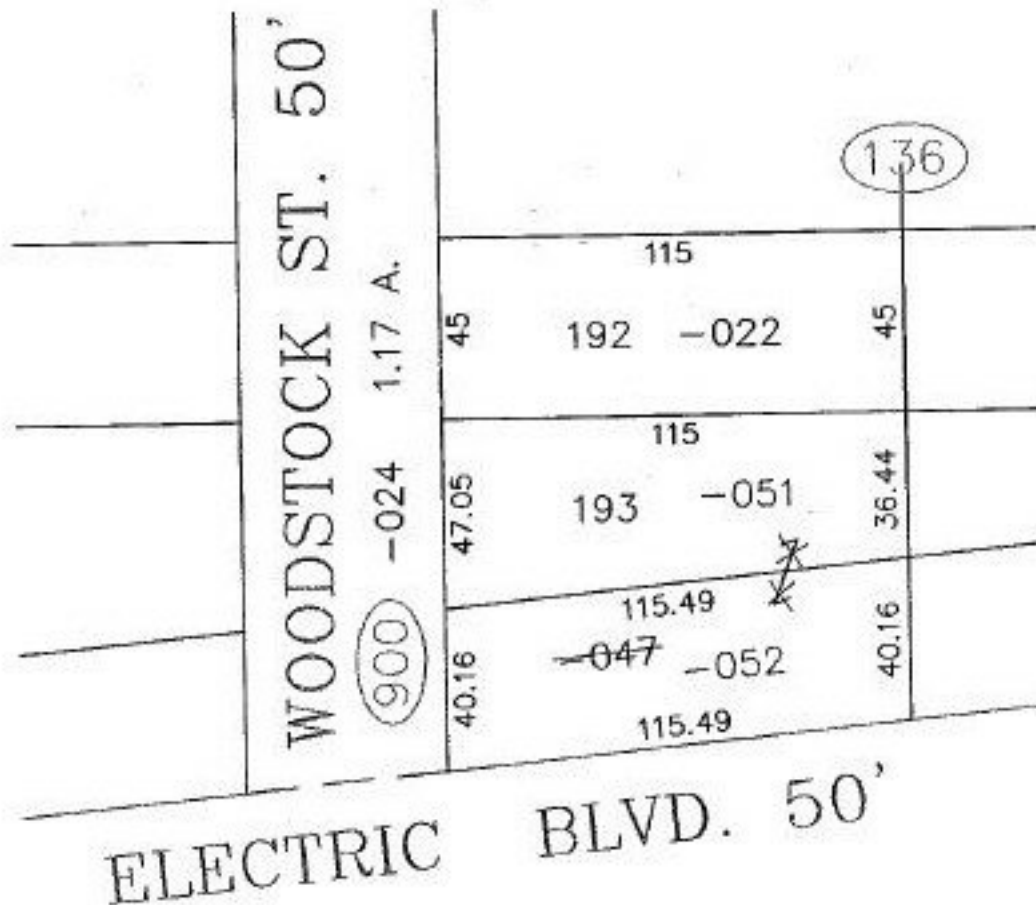
NO. 00221-U

# UNCOMBINATION

~~04-00-018-136-047~~  
~~87.21 X 115.49~~

04-00-018-136-051  
47.05 X 115.49

04-00-018-136-052  
40.16 X 115.49



SPLITS/DEEDS PROCESSED

LORAIN COUNTY TAX MAP DEPARTMENT  
226 MIDDLE AVE. ELYRIA, OHIO

SURVEYED BY: JOHN W. WARDEN

CLOSURE: 0.00 : 10.000

MAP PAGE(S): 04-00-018-C

APPROVED BY: J. SPILLMAN DATE: 11/10/99

SCALE: 1" = 50' - PRIOR INSTRUMENT: 990625120