

PARENT PARCEL: 02-00-051-101-026

CHILD PARCEL: XY-XY-XXX-XXX-XXX

STARTING POINT: CL OF EAST ERIE AVE. & S. E. CORNER OF GREGGS 2nd ADD.

NO. 00194-D

FRONTAGE & DEPTH CORR.

02-00-051-101-026

~~40 X 227~~

40 X 290

CORR. PER SURV.

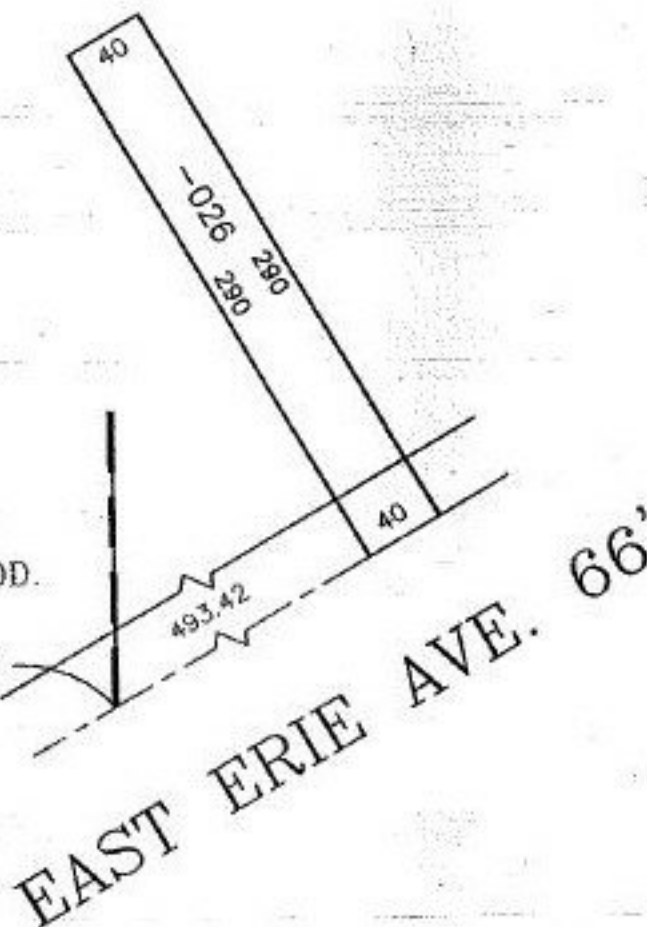
DONALD E. HIMES



GREGGS 2nd ADD.

V. 2 PG. 25

BEGINNING



SPLITS/DEEDS PROCESSED

LORAIN COUNTY TAX MAP DEPARTMENT
226 MIDDLE AVE. ELYRIA, OHIO

SURVEYED BY: DONALD E. HIMES

CLOSURE: 0.00 : 10.000

MAP PAGE(S): 2-00-051-A

APPROVED BY: T. SPILLMAN DATE: 08/25/99

SCALE: 1" = 100' PRIOR INSTRUMENT: 990622319