

PARENT PARCEL: 06-25-116-000-003

CHILD PARCEL: XX-XX-XXX-XXX-XXX

STARTING POINT: N.E. CORNER OF O.L. 116, INTERSECTION OF THE SOUTH R.O.W. OF E. BRIDGE ST.
& THE WEST R.O.W. OF E. RIVER ST.

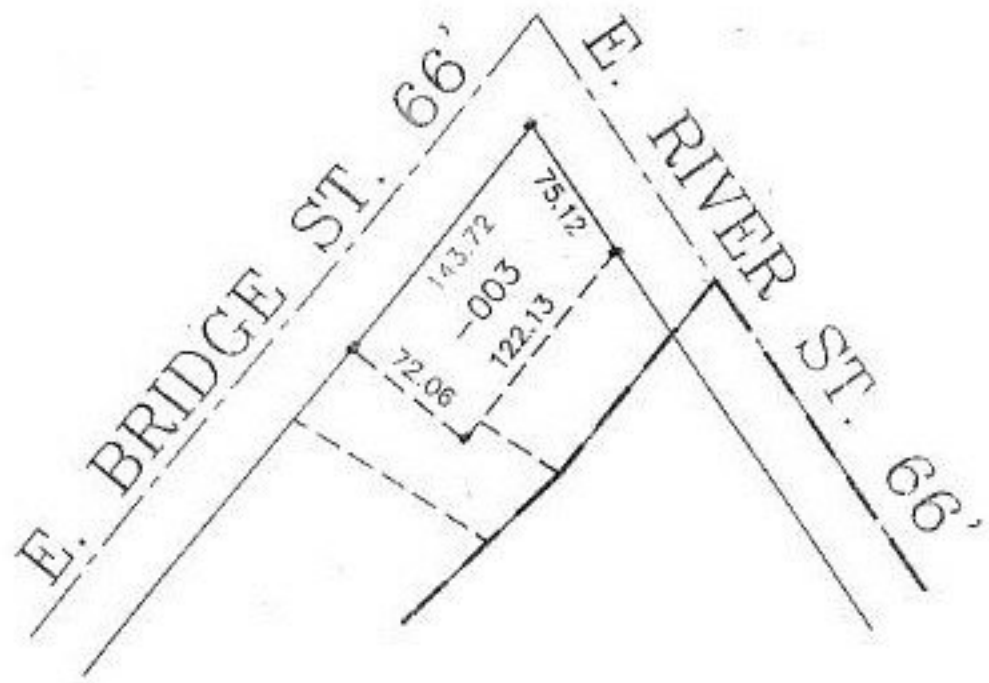
NO. 00189-D

FRONTAGE & DEPTH CORR.

06-25-116-000-003

~~75 X 143~~

75.12 X 143.72



TRANSFERRED 8/2/99 DOC. NO 990632560

SPLITS/DEEDS PROCESSED

LORAIN COUNTY TAX MAP DEPARTMENT
226 MIDDLE AVE. ELYRIA, OHIO

SURVEYED BY: NONE
CLOSURE: 0.28 : 10.000
MAP PAGE(S): 6-103
APPROVED BY: J. SPILLMAN DATE: 09/02/99
SCALE: 1" = 100' PRIOR INSTRUMENT: 990632560