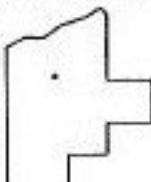
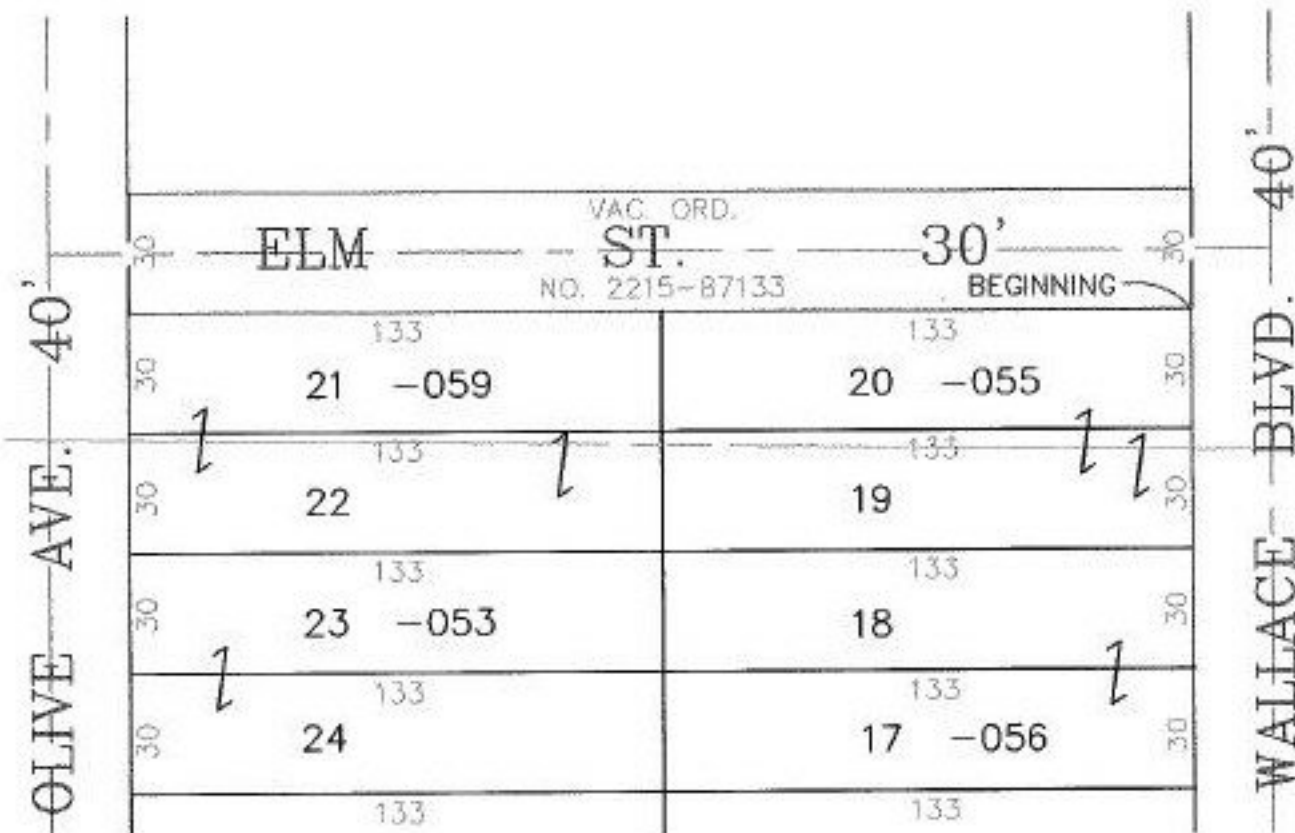
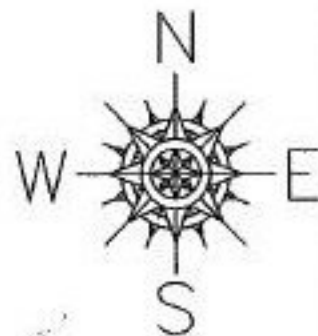


PARENT PARCEL: VACATION OF PART OF ELM ST. IN NORTH RIDGEVILLE
 CHILD PARCEL: XXXXXXXXXXXX
 STARTING POINT: SOUTH LINE OF ELM ST. & WEST LINE OF WALLACE BLVD.

NO. 00178-V

NO MAP CHANGES

VACATION ORD.
 NO. 2215-87
 ALREADY ON MAP



SPLITS/DEEDS PROCESSED
 LORAIN COUNTY TAX MAP DEPARTMENT
 226 MIDDLE AVE. ELYRIA, OHIO

SURVEYED BY: NONE
 CLOSURE: CAN'T RUN
 MAP PAGE(S): 07-00-017-B & 07-00-018-D
 APPROVED BY: T. SPILLMAN DATE: 09/03/99
 SCALE: 1" = 50' PRIOR INSTRUMENT: NONE

