

PARENT PARCEL: PARTIAL STREET VACATION OF ELDER ST.

CHILD PARCEL: XXXXXXXXXXXX

STARTING POINT: INTERSECTION OF THE SOUTH R.O.W. OF ELDER ST. & WEST R.O.W. OF RIDGEVIEW BLVD.

NO. 00173-V

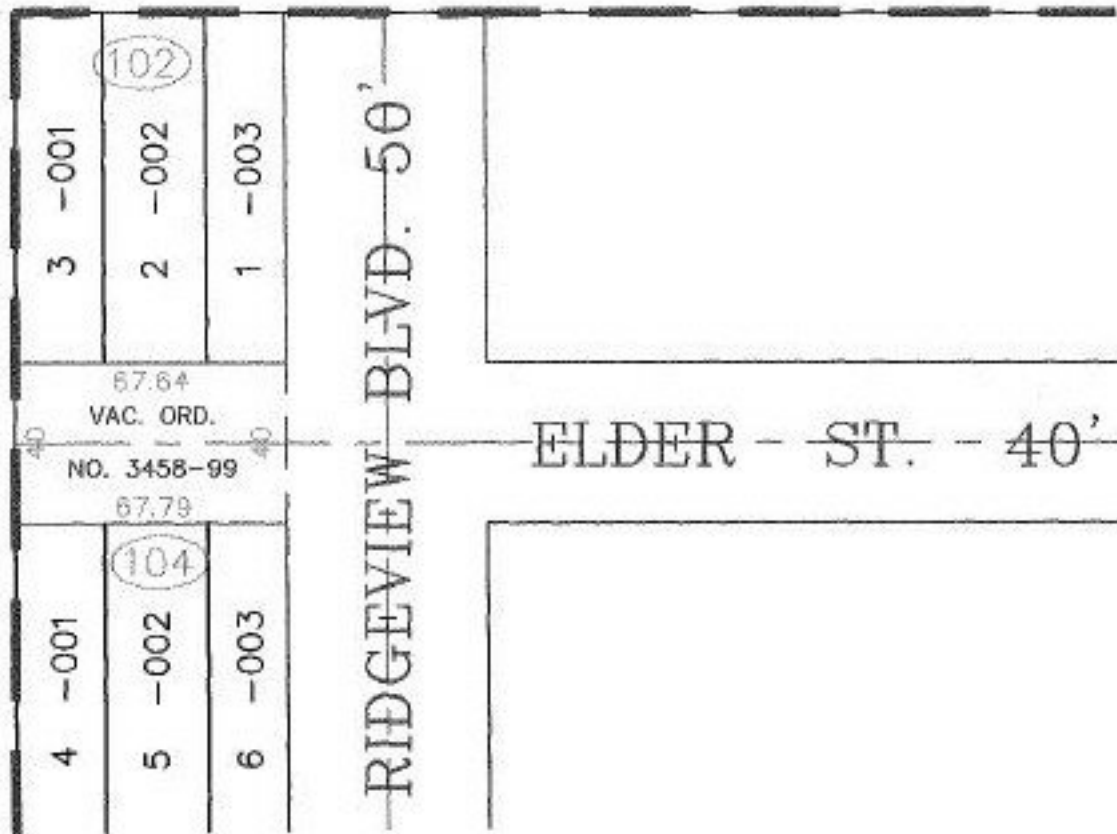
# VACATION

STREET VACATION

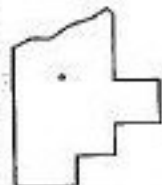
PART OF ELDER ST.

ORD. NO. 3458-99

PASSED 6/7/99



CENTER RIDGE HEIGHTS SUBDIVISION



**SPLITS/DEEDS PROCESSED**  
LORAIN COUNTY TAX MAP DEPARTMENT  
226 MIDDLE AVE. ELYRIA, OHIO

SURVEYED BY: DANE HAPONEK  
CLOSURE: 0.06 : 10.000  
MAP PAGE(S): 07-00-020-B  
APPROVED BY: T. SPILLMAN DATE: 08/27/99  
SCALE: 1" = 50' PRIOR INSTRUMENT: NONE

1/19