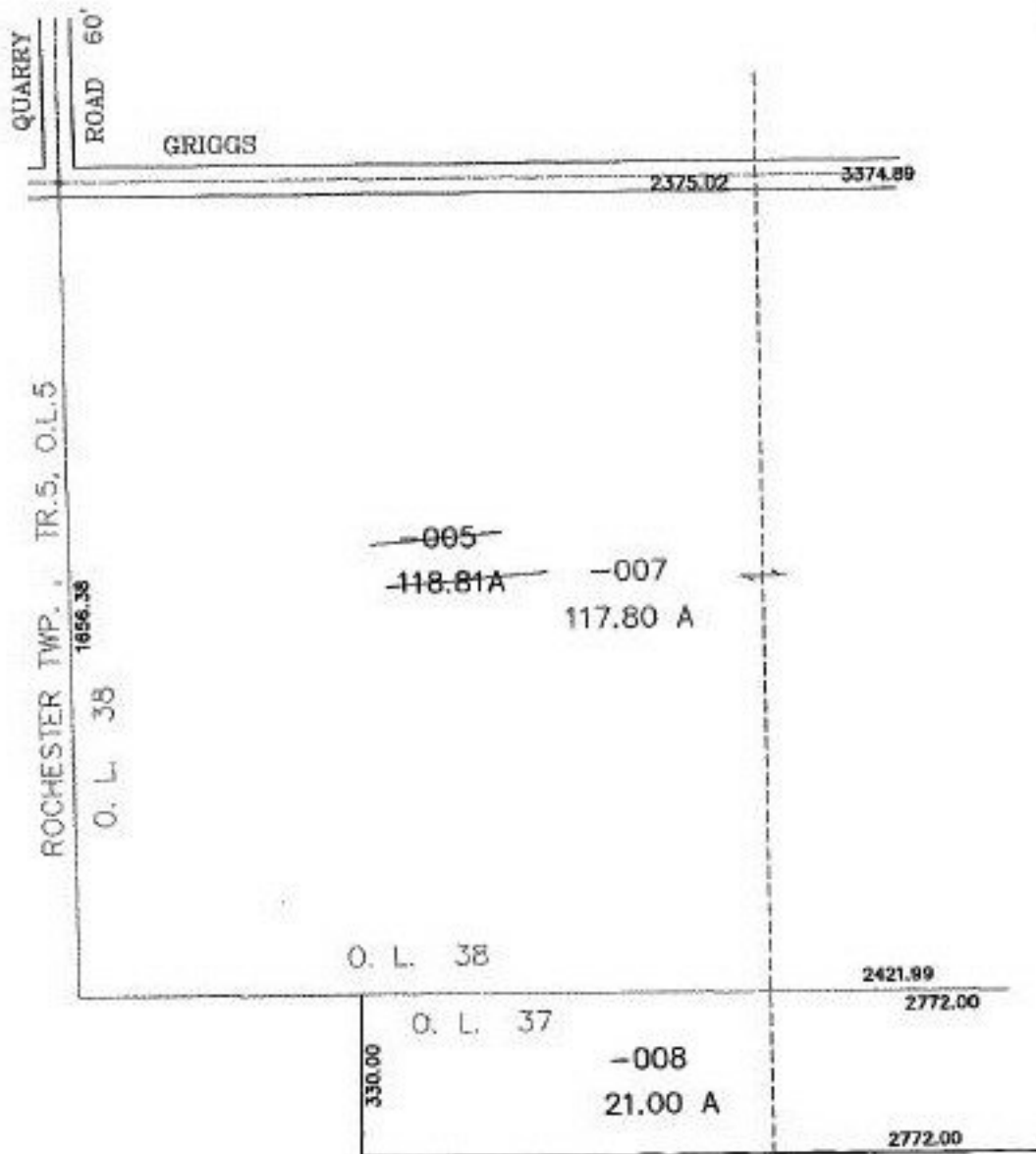


PARENT PARCEL: 21-05-038-000-005

CHILD PARCEL: 21-05-038-000-006, 007

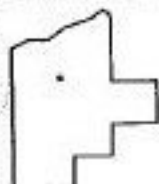
STARTING POINT: C/A BAKER ROAD AT THE S. E. CORNER OF O. L. 38

NO. 00166



SHEET (1) OF (2)

VS
2-21-00



SPLITS/DEEDS PROCESSED
LORAIN COUNTY TAX MAP DEPARTMENT
226 MIDDLE AVE. ELYRIA, OHIO

SURVEYED BY: DANE A HAPONEK
CLOSURE: 0.08 / 10.000
MAP PAGE(S): 21-A
APPROVED BY: F. COLBERT DATE: 7/15/99
SCALE: 1" = 400' PRIOR INSTRUMENT: DV XXXX/XXX