

PARENT PARCEL: VACATION OF PART OF 48TH ST.

CHILD PARCEL: XX-XX-XXX-XXX-XXX

STARTING POINT: EAST R.O.W. OF TOLEDO AVE. & SOUTH R.O.W. OF 48TH ST.

NO. 00164-V

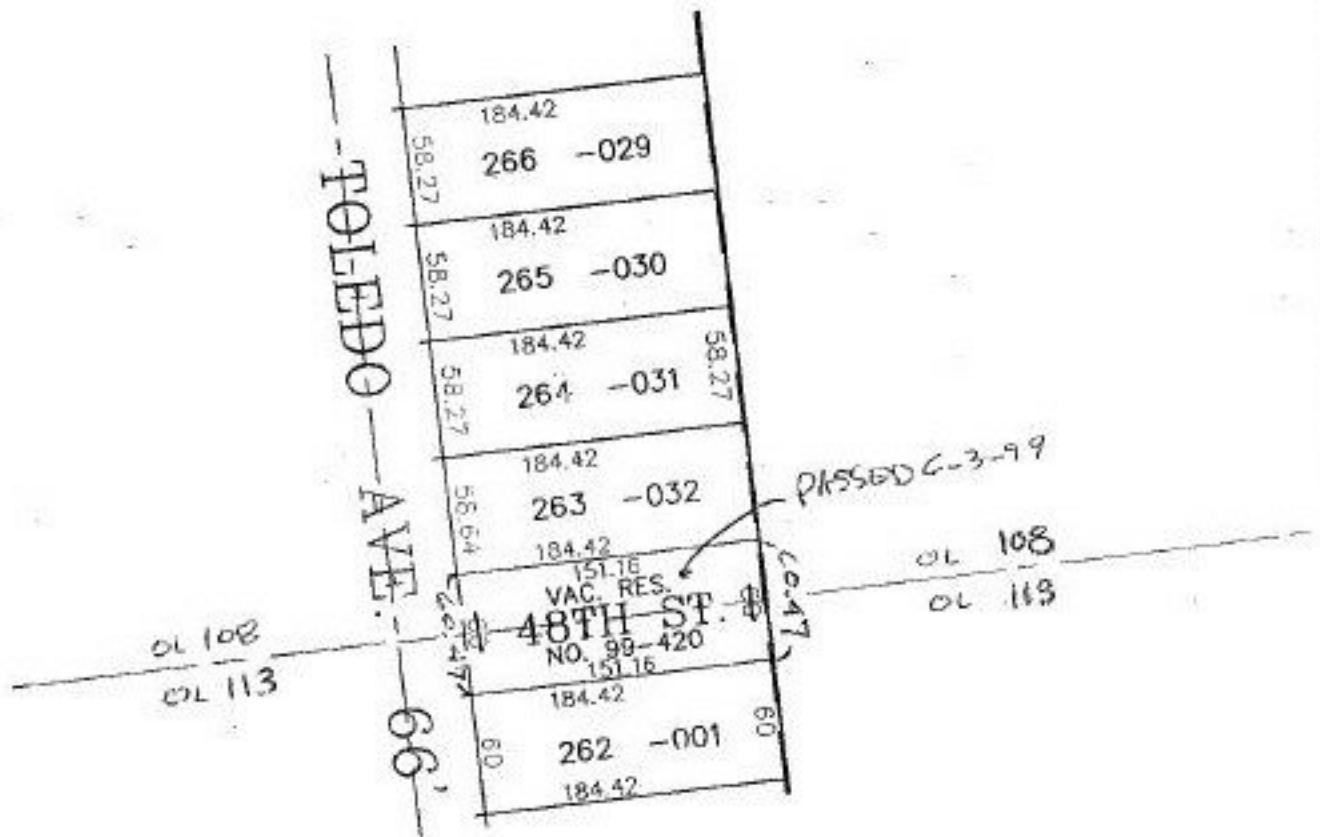


STREET VACATION

PT. 48TH ST.

SHEEFIELD TWP.

RES. NO. 99-420



SPLITS/DEEDS PROCESSED

LORAIN COUNTY TAX MAP DEPARTMENT
226 MIDDLE AVE. ELYRIA, OHIO

SURVEYED BY: NONE

CLOSURE: CAN'T RUN

MAP PAGE(S): 03-00-108-B & 03-00-113-B

APPROVED BY: I. SPILLMAN DATE: 08/16/99

SCALE: 1" = 100' PRIOR INSTRUMENT: NONE