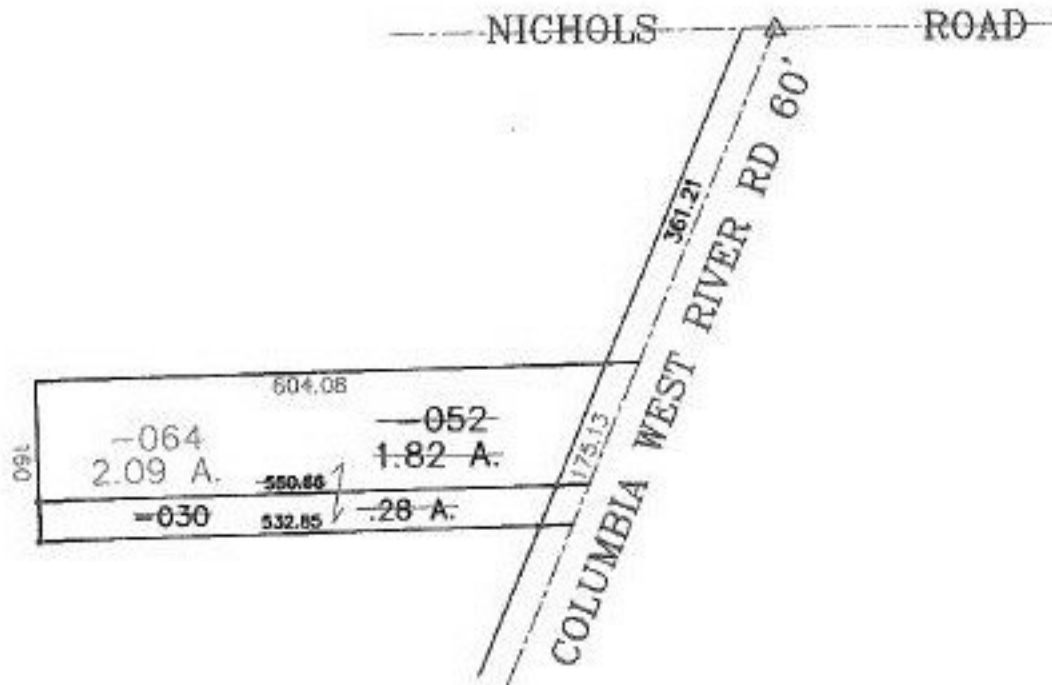


PARENT PARCEL: 12-00-044-000-030, -052

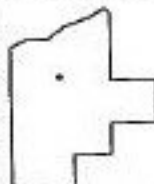
CHILD PARCEL: 12-00-044-000-064

STARTING POINT: RRS INT CL OF NICHOLS AND CL COLUMBIA WEST RIVER RD

NO. 00159



TS
2-21-00



SPLITS/DEEDS PROCESSED
LORAIN COUNTY TAX MAP DEPARTMENT
226 MIDDLE AVE. ELYRIA, OHIO

SURVEYED BY: RODGER G. SIMON

CLOSURE: 0.07 : 10.000

MAP PAGE(S): 12-00-044-A

APPROVED BY: DRH DATE: 7/16/99

SCALE: 1" = 200' PRIOR INSTRUMENT: #540254