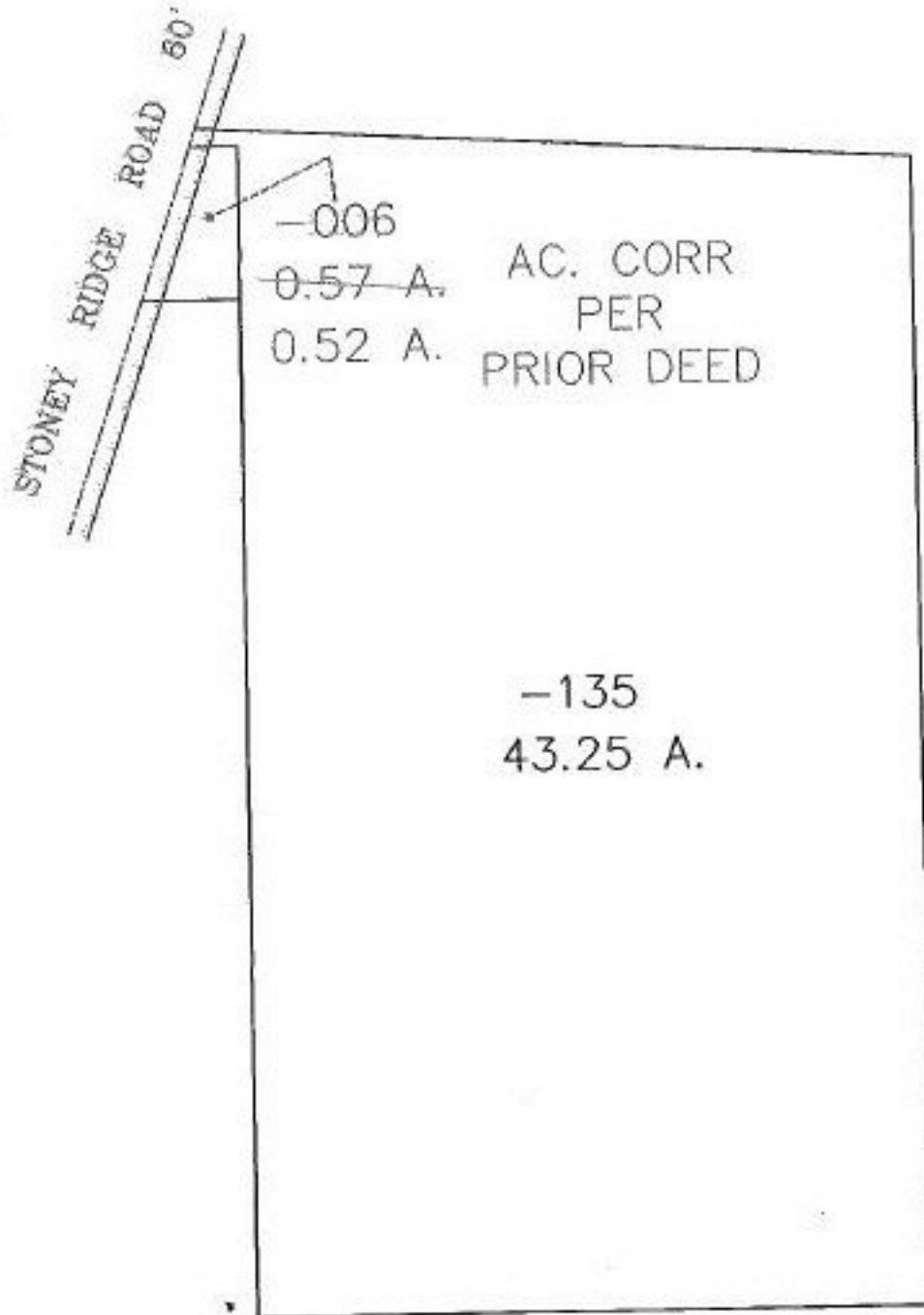


PARENT PARCEL: 04-00-012-103-006

CHILD PARCEL: 04-00-012-103-006

STARTING POINT: CL OF STONEY RIDGE RD SW CORNER OF LAND CONVEYED
TO EDWARD RADOS AND ELLA RADOS JULYIA

NO. 00144-D



15
9-20-99



SPLITS/DEEDS PROCESSED
LORAIN COUNTY TAX MAP DEPARTMENT
226 MIDDLE AVE. ELYRIA, OHIO

SURVEYED BY:	UPDATE LEGAL
CLOSURE:	XXXXXX
MAP PAGE(S):	04-00-012-C
APPROVED BY:	DATE: 8/6/99
SCALE:	1" = 300' PRIOR INSTRUMENT: 1224/835