

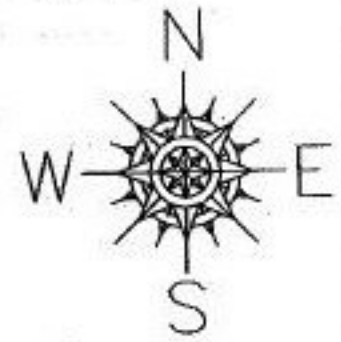
PARENT PARCEL: 05-00-033-000-002

CHILD PARCEL: XX-XX-XXX-XXX-XXX

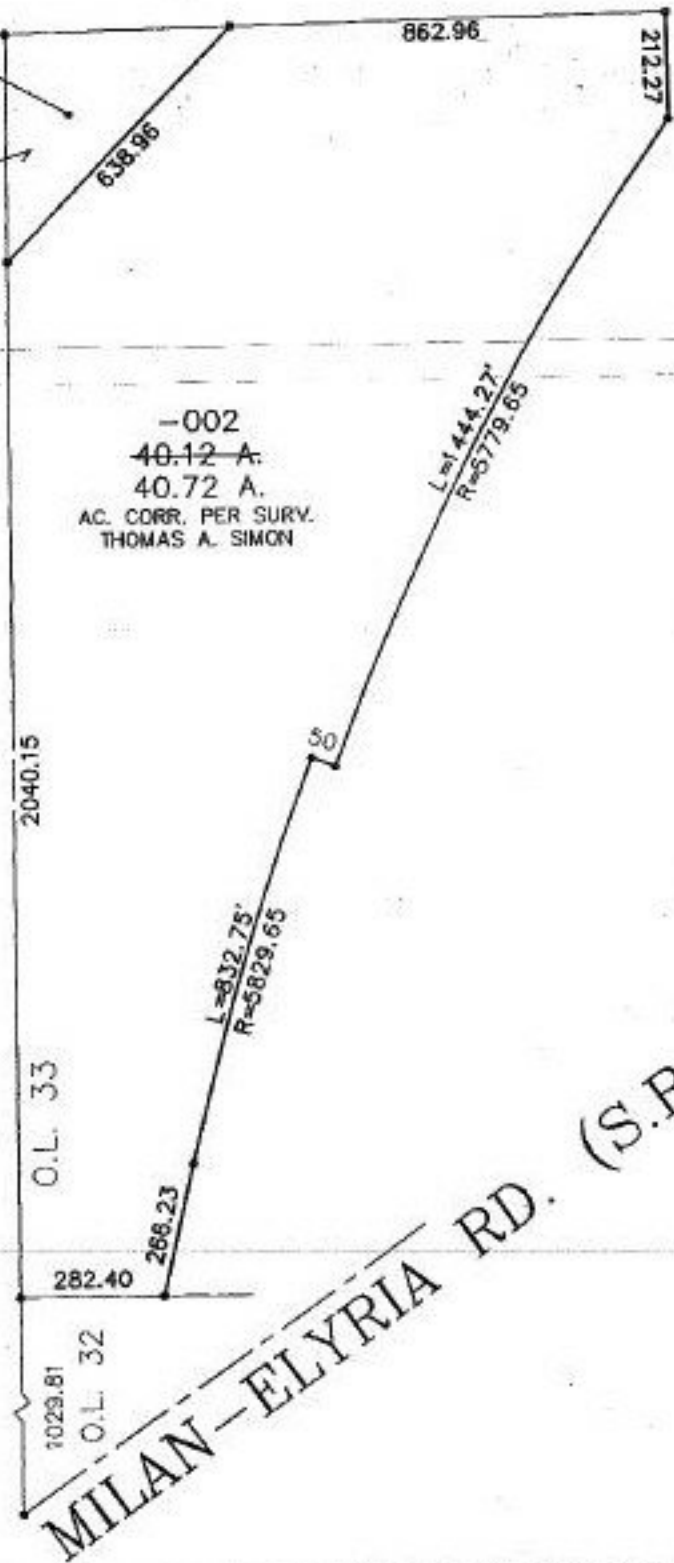
STARTING POINT: CL OF MILAN-ELYRIA RD. & WEST LI NE OF O.L. 32

NO. 00131-A

PT. 05-00-029-000-031
PT. 14.38 A.



-002
40.12 A.
40.72 A.
AC. CORR. PER SURV.
THOMAS A. SIMON



2040.15

862.96

212.27

638.96

L=1444.27'
R=3779.65'

50

L=812.75'
R=5829.65'

O.L. 33

282.40

1029.81

O.L. 32

MILAN-ELYRIA RD. (S.R. 113) 90'



SPLITS/DEEDS PROCESSED
LORAIN COUNTY TAX MAP DEPARTMENT
226 MIDDLE AVE. ELYRIA, OHIO

SURVEYED BY: THOMAS A. SIMON
CLOSURE: 0.00 : 10.000
MAP PAGE(S): 05-00-033-A
APPROVED BY: TJS DATE: 07/01/99
SCALE: 1" = 400' PRIOR INSTRUMENT: DV 1094/184