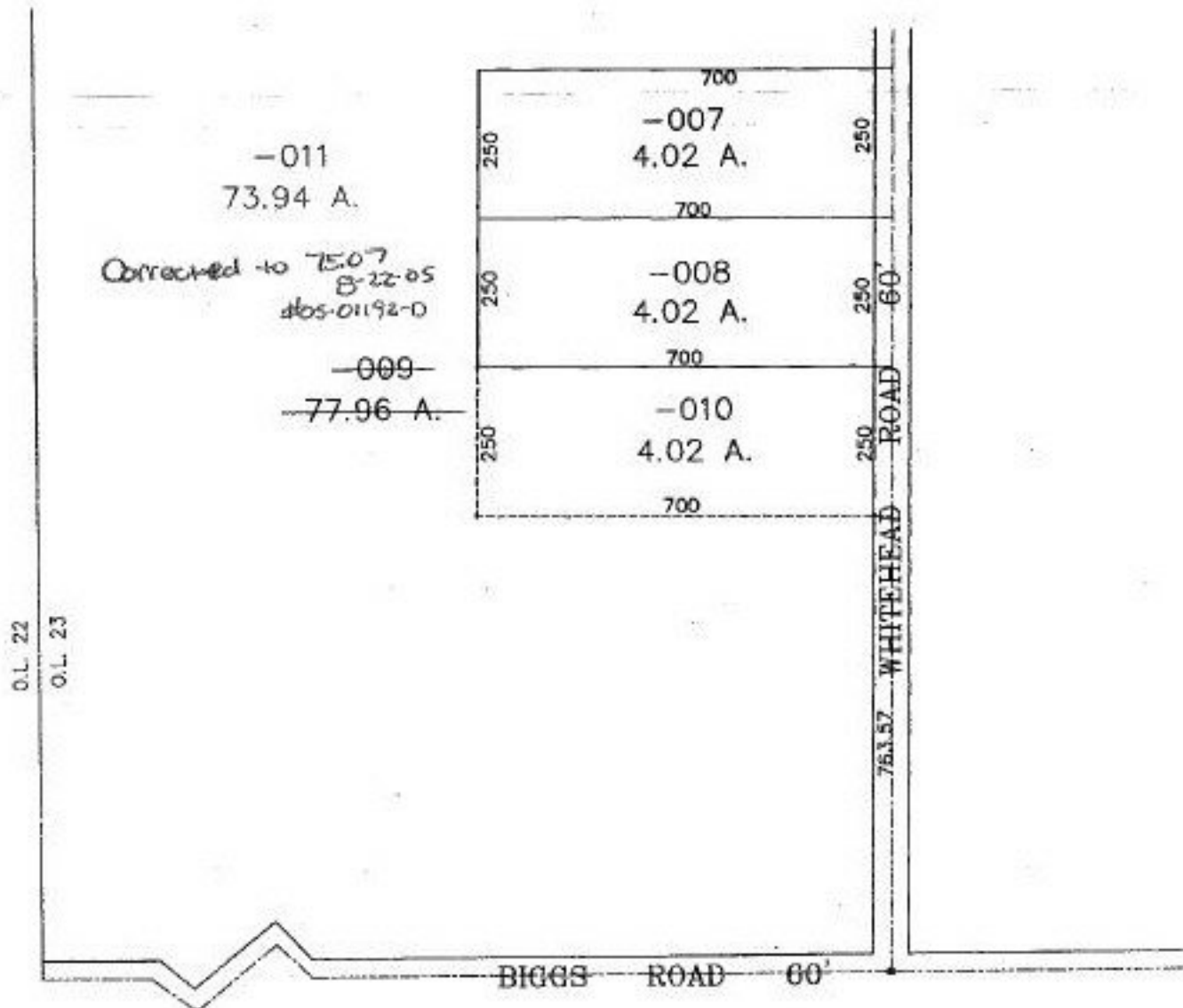


PARENT PARCEL: 15-00-023-000-009

CHILD PARCEL: 15-00-023-000-010, -011

STARTING POINT: INT. C.L. BIGGS ROAD AND WITEHEAD ROAD

NO. 00127



SPLITS/DEEDS PROCESSED
 LORAIN COUNTY TAX MAP DEPARTMENT
 226 MIDDLE AVE. ELYRIA, OHIO

SURVEYED BY: RODGER G. SIMON
 CLOSURE: 0.00 : 10.000
 MAP PAGE(S): 15-A
 APPROVED BY: DRH DATE: 6/22/99
 SCALE: 1" = 300' PRIOR INSTRUMENT: DV 509/373