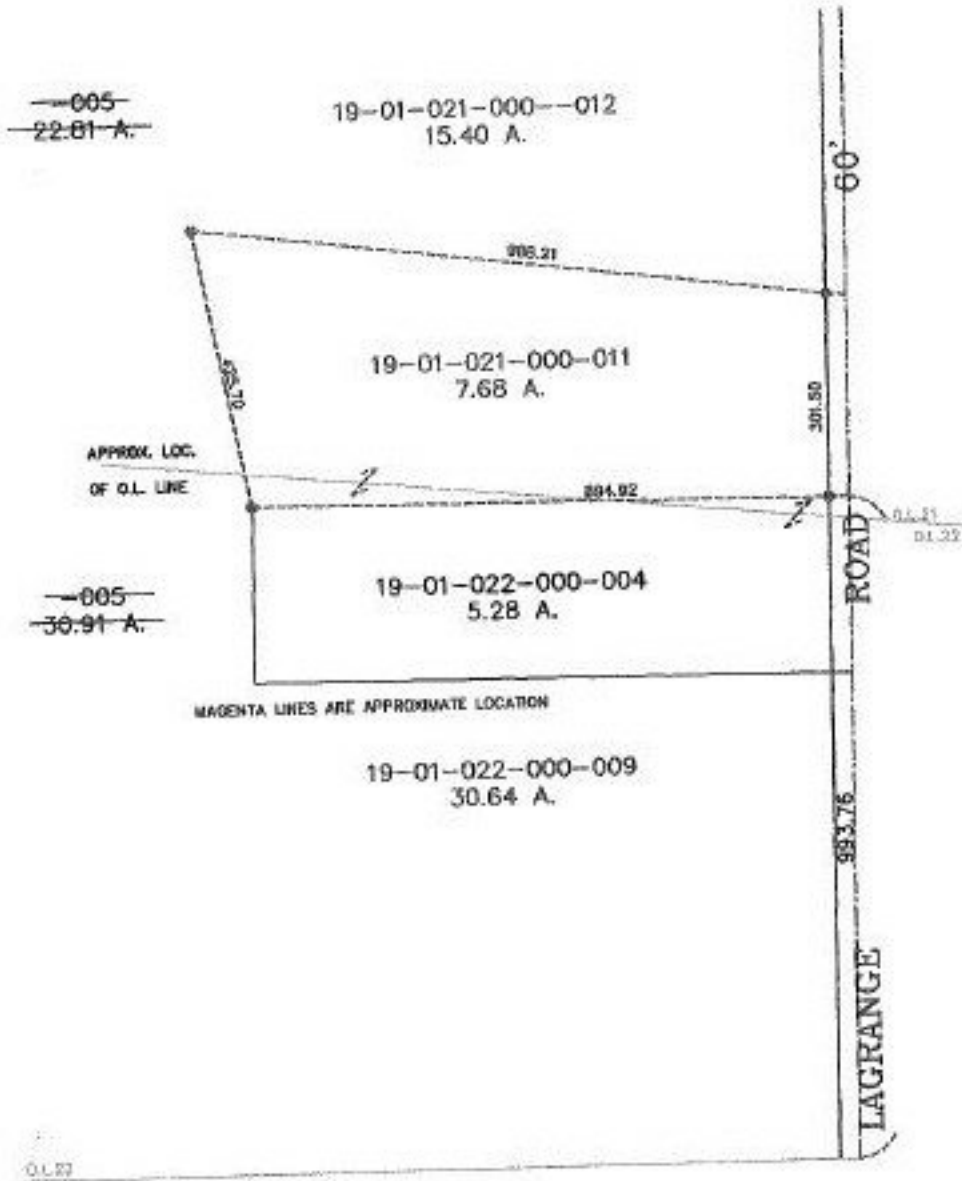


PARENT PARCEL: 19-01-021-000-005, 19-01-022-000-005
 CHILD PARCEL: 19-01-021-000-011, -012, 19-01-022-000-009
 STARTING POINT: INT. SL. O.L. 22 & C.L. LAGRANGE ROAD

NO. 00115



SPLITS/DEEDS PROCESSED
 LORAIN COUNTY TAX MAP DEPARTMENT
 226 MIDDLE AVE. ELYRIA, OHIO

SURVEYED BY: THOMAS A. SIMON
 CLOSURE: 0.01 : 10,000
 MAP PAGE(S): 19-F
 APPROVED BY: DRH DATE: 6/29/99
 SCALE: 1" = 300' PRIOR INSTRUMENT: DV 1039/33