

PARENT PARCEL: 06-24-070-104-014

CHILD PARCEL: XX-XX-XXX-XXX-XXX

STARTING POINT: NORTH LINE OF BOND ST. & THE S.W. CORNER OF S\1 6 IN BLOCK 11  
OF ELY & BOYTON'S 2nd ADDITION

NO. 00115-D



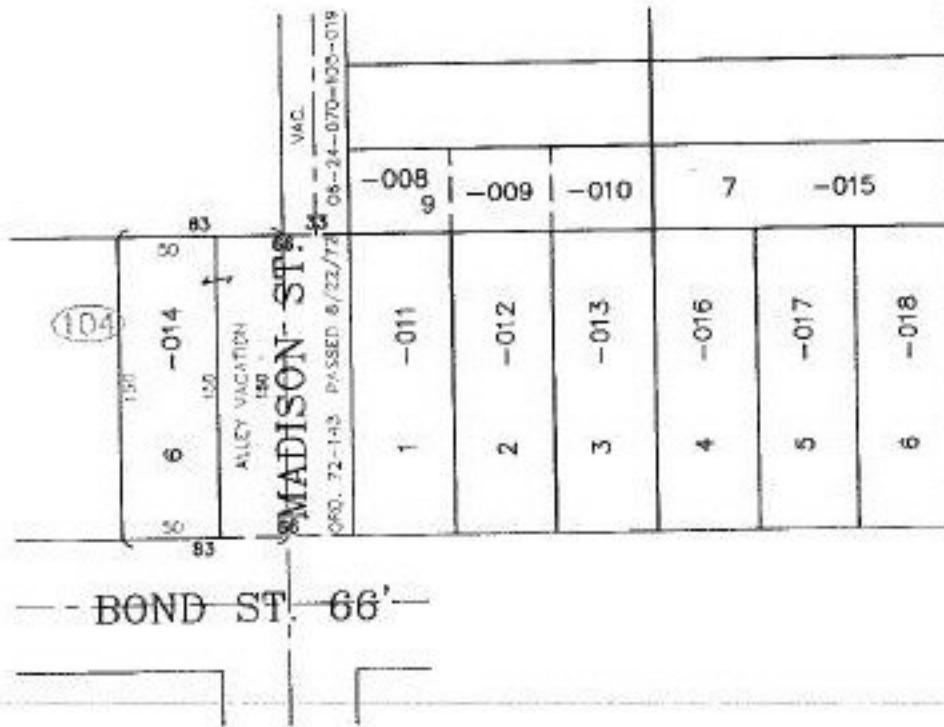
# FRONTAGE & DEPTH CORRECTION

06-24-070-104-014

~~50 X 150~~

83 X 150

CORR. PER DEED & ORD. 72/143



## SPLITS/DEEDS PROCESSED

LORAIN COUNTY TAX MAP DEPARTMENT  
226 MIDDLE AVE. ELYRIA, OHIO

SURVEYED BY: NONE

CLOSURE: CAN'T RUN

MAP PAGE(S): 6-81

APPROVED BY: TJS DATE: 05/17/99

SCALE: 1" = 100. PRIOR INSTRUMENT: DV 1236/265