

PARENT PARCEL: 12-00-050-000-062 -012
CHILD PARCEL: XX-XX-XXX-XXX-XXX
STARTING POINT: CL OF EAST RIVER RD. & S.E. CORNER OF LAND CONVEYED TO LOVELL

NO. 00106-D

ACREAGE CORRECTION

12-00-050-000-012

~~7.80 A.~~

7.90 A.

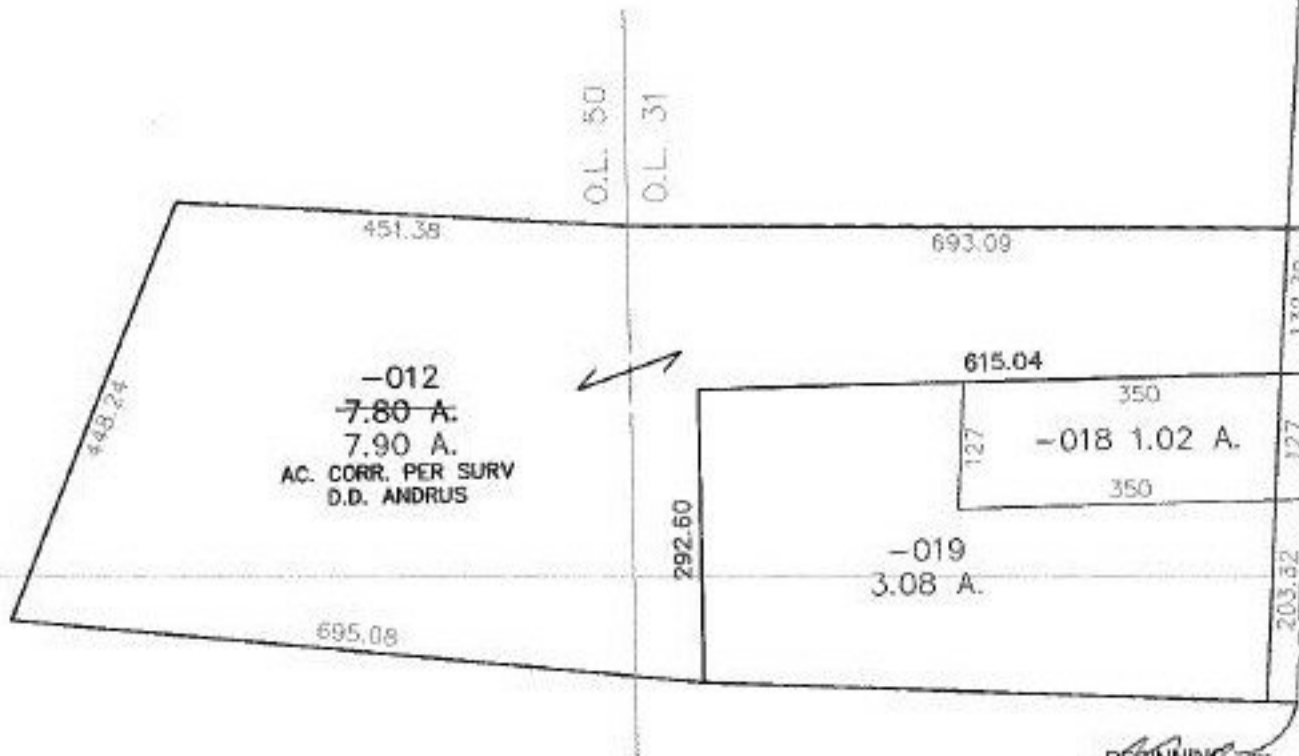
AC. CORR. PER SURV.

D.D. ANDRUS

SURVEY & UPDATE LEGAL
BEFORE NEXT TRANSFER



73
2-18-00



MALLET CREEK - BAY VILLAGE RD.

BEGINNING



SPLITS/DEEDS PROCESSED
LORAIN COUNTY TAX MAP DEPARTMENT
226 MIDDLE AVE. ELYRIA, OHIO

SURVEYED BY: D.D. ANDRUS
CLOSURE: 37.24 : 10.000
MAP PAGE(S): 12-G
APPROVED BY: I. SPILLMAN DATE: 07/26/99
SCALE: 1" = 200' PRIOR INSTRUMENT: OR 1344/702