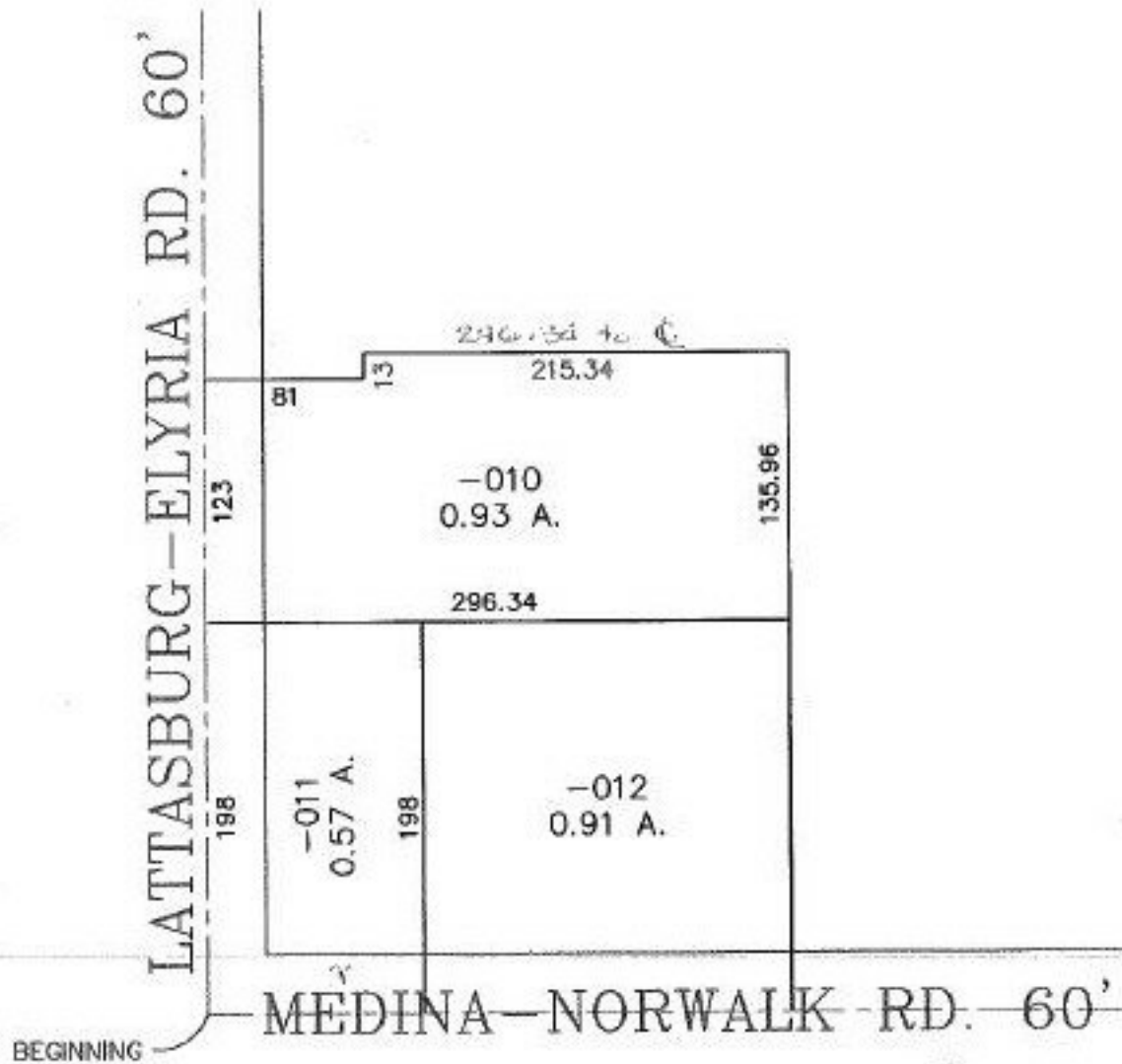


PARENT PARCEL: 19-04-012-000-010
CHILD PARCEL: XX-XX-XXX-XXX-XXX
STARTING POINT: S.W. CORNER OF O.L. 12

NO. 00102-X

MAP CORRECTION

ADD DIMS. IN RED



TJ
2-23-00



SPLITS/DEEDS PROCESSED
LORAIN COUNTY TAX MAP DEPARTMENT
226 MIDDLE AVE. ELYRIA, OHIO

SURVEYED BY: NONE
CLOSURE: CAN'T RUN
MAP PAGE(S): 19-04-012-*XB*
APPROVED BY: I. SPILLMAN DATE: 07/21/99
SCALE: 1" = 100' PRIOR INSTRUMENT: DV 276/492