

PARENT PARCEL: 19-04-012-000-010

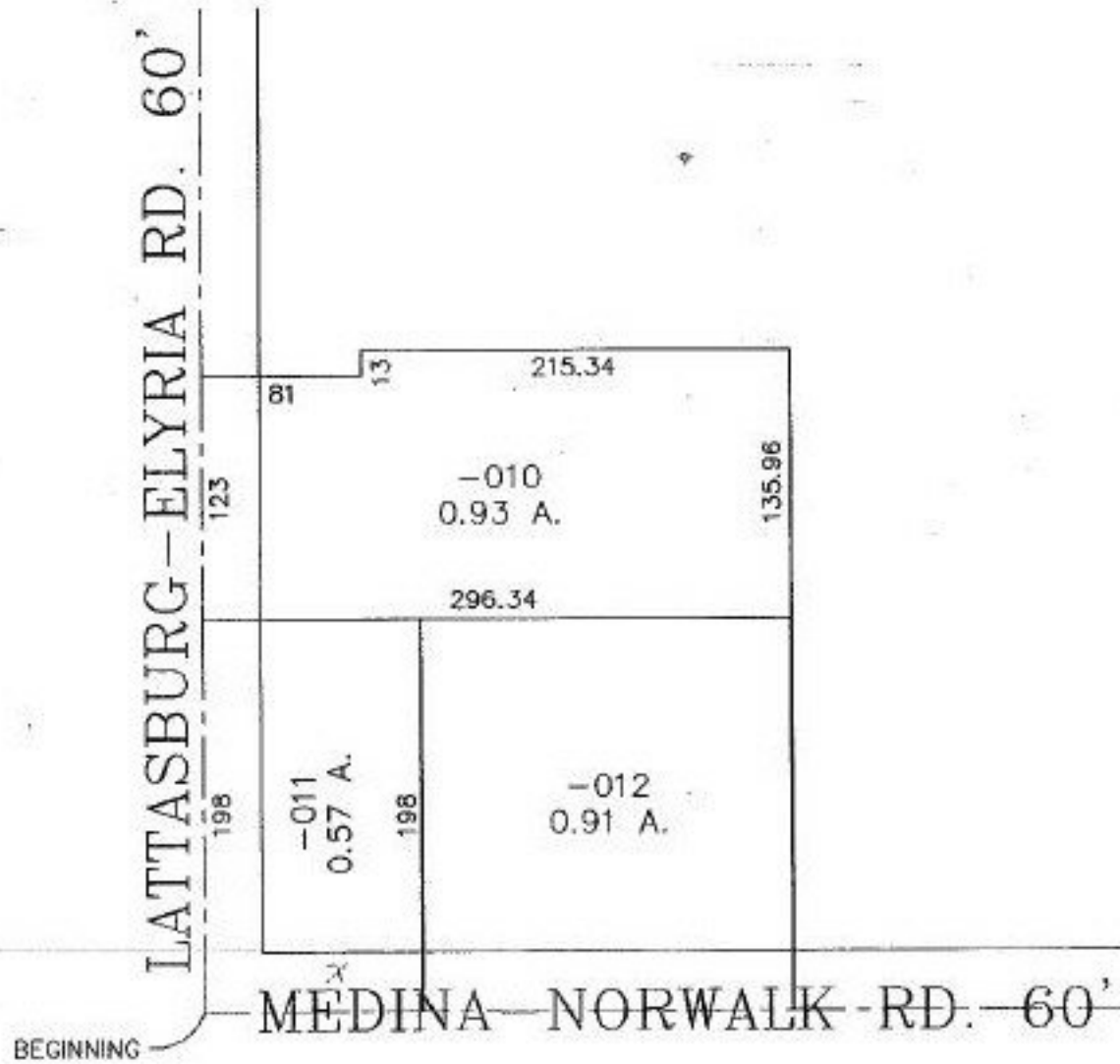
CHILD PARCEL: XX-XX-XXX-XXX-XXX

STARTING POINT: S.W. CORNER OF O.L. 12

NO. 00102-X

MAP CORRECTION

ADD DIMS. IN RED



SPLITS/DEEDS PROCESSED

LORAIN COUNTY TAX MAP DEPARTMENT
226 MIDDLE AVE. ELYRIA, OHIO

SURVEYED BY: NONE

CLOSURE: CAN'T RUN

MAP PAGE(S): 19-04-012-A

APPROVED BY: J. SPILLMAN DATE: 07/21/99

SCALE: 1" = 100' PRIOR INSTRUMENT: DV 276/492