

PARENT PARCEL: 08-14-010-000-020, -018

CHILD PARCEL: 08-14-010-000-023, -024, -025

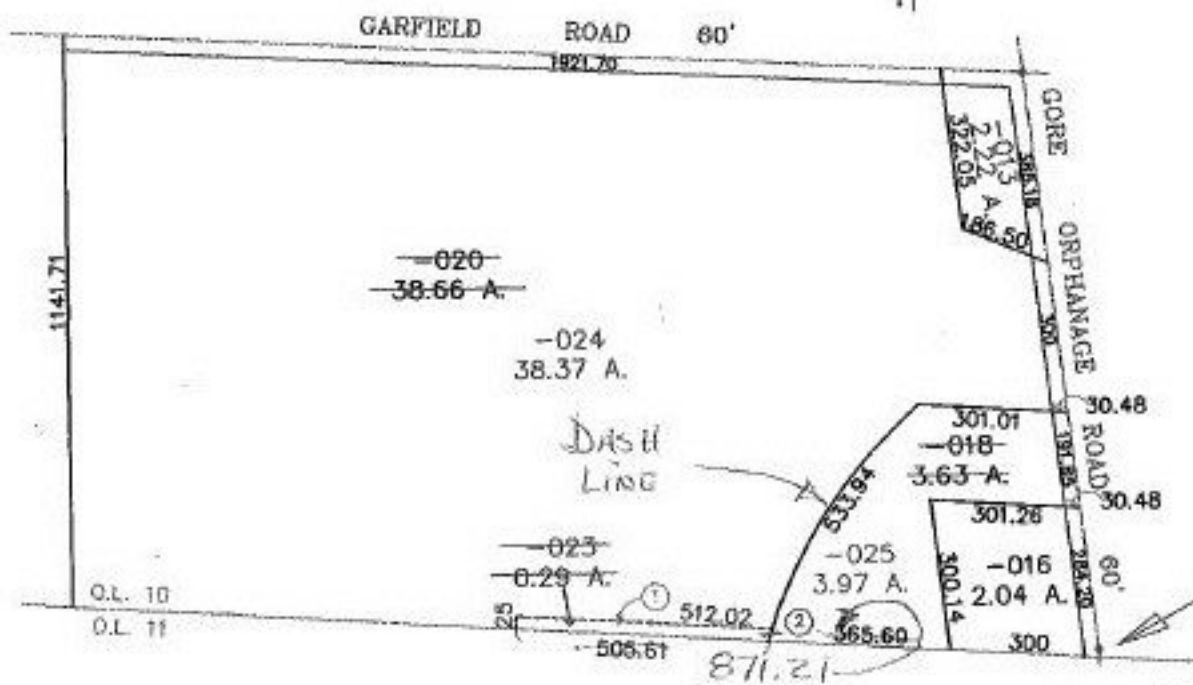
STARTING POINT: C.L. OF GORE ORPHANAGE RD, SE CORNER OF Q.L. 10

NO. 00101

DETAIL



NEED DRAWING



SEE
DETAIL

PRIOR INSTRUMENT: DV 1345/650
PRIOR INSTRUMENT: OR 60/772



SPLITS/DEEDS PROCESSED
LORAIN COUNTY TAX MAP DEPARTMENT
226 MIDDLE AVE. ELYRIA, OHIO

SURVEYED BY: DOUGLAS H. MOSLEY
CLOSURE: 0.04 : 10.000
MAP PAGE(S): 8-A
APPROVED BY: DRH DATE: 7/13/99
SCALE: 1" = 400