

RASTER

PARENT PARCEL: 02-01-003-252-014 THRU -016

CHILD PARCEL:

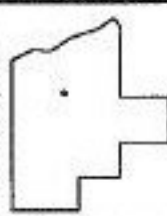
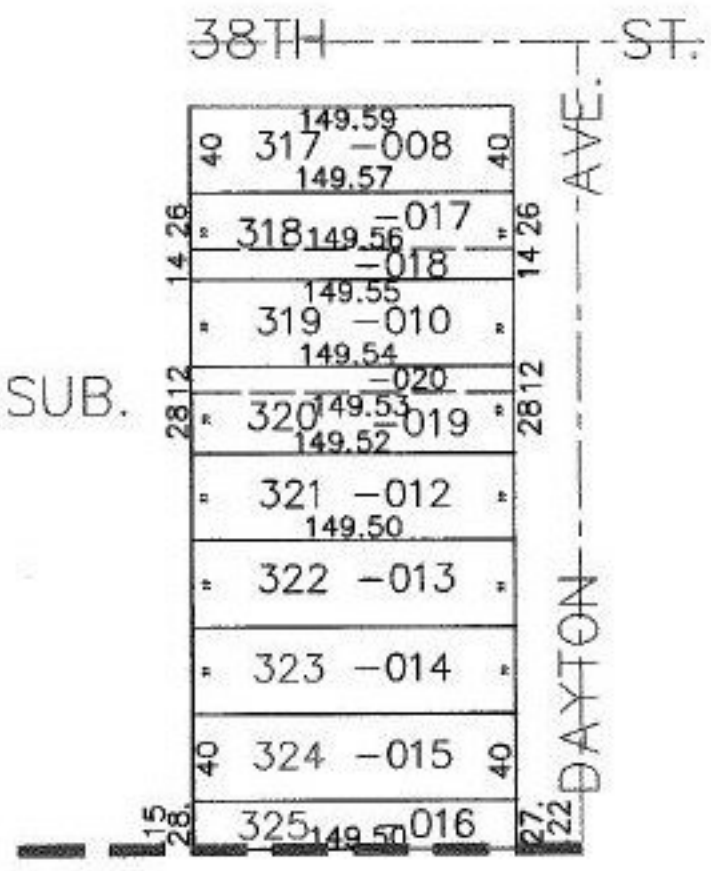
STARTING POINT: PART OF LORAIN STONE CO'S 2ND SUB.

NO. 00504-X



MAP CORRECTION ONLY

PART OF:
LORAIN STONE CO'S 2ND SUB.
VOL.6 PG.38



SPLITS/DEEDS PROCESSED
LORAIN COUNTY TAX MAP DEPARTMENT
226 MIDDLE AVE. ELYRIA, OHIO

SURVEYED BY: NONE
 CLOSURE: NONE
 MAP PAGE(S): 2-01-003-K
 APPROVED BY: RRM DATE: 1-17-01
 SCALE: 1" = 100' PRIOR INSTRUMENT: PV 6/38