

PARENT PARCEL: 12-00-065-000-048

CHILD PARCEL: 12-00-065-000-049 & -050

STARTING POINT: XXXXXX

NO. 00477-U

UNCOMBINATION

~~12-00-065-000-048~~
~~6.76 A.~~

12-00-065-000-049
5.00 A.

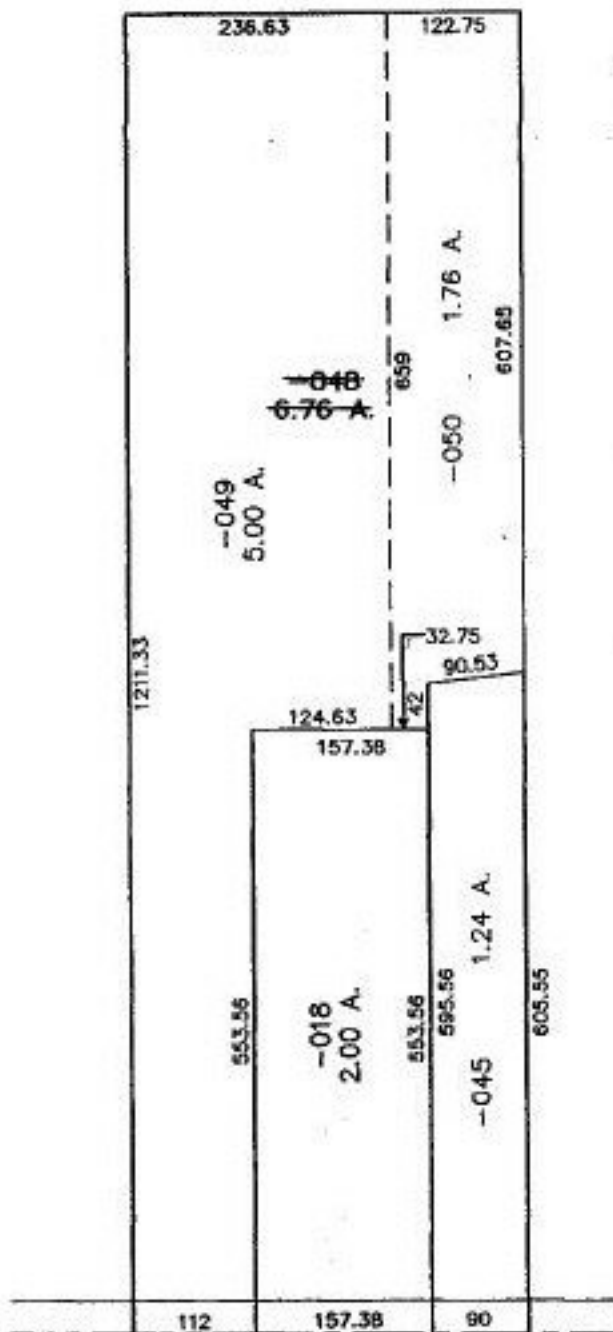
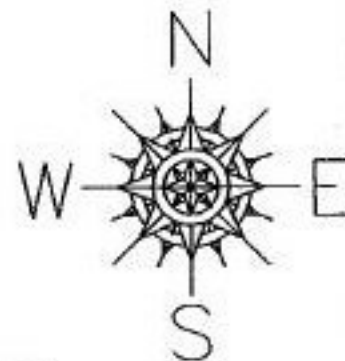
12-00-065-000-050
1.76 A.

PER DEED 970481263

ALREADY DONE

SPLIT #22260-D

FRANK DIDN'T PUT IN REGISTER
OR TAX MAP



SPLITS/DEEDS PROCESSED

LORAIN COUNTY TAX MAP DEPARTMENT
226 MIDDLE AVE. ELYRIA, OHIO

SURVEYED BY: J. W. WARDEN

CLOSURE: 0.01 : 10.000

MAP PAGE(S): 12-00-065-A

APPROVED BY: TJS DATE: 01/24/01

SCALE: 1" = 200' PRIOR INSTRUMENT: 970481263