

PARENT PARCEL: ALLEY VACATION

CHILD PARCEL: XXXXXXXXXXXX

STARTING POINT: XXXXXXXXXXXX

NO. 00467-V

# ALLY VACATION

ORD. NO. 2000-164

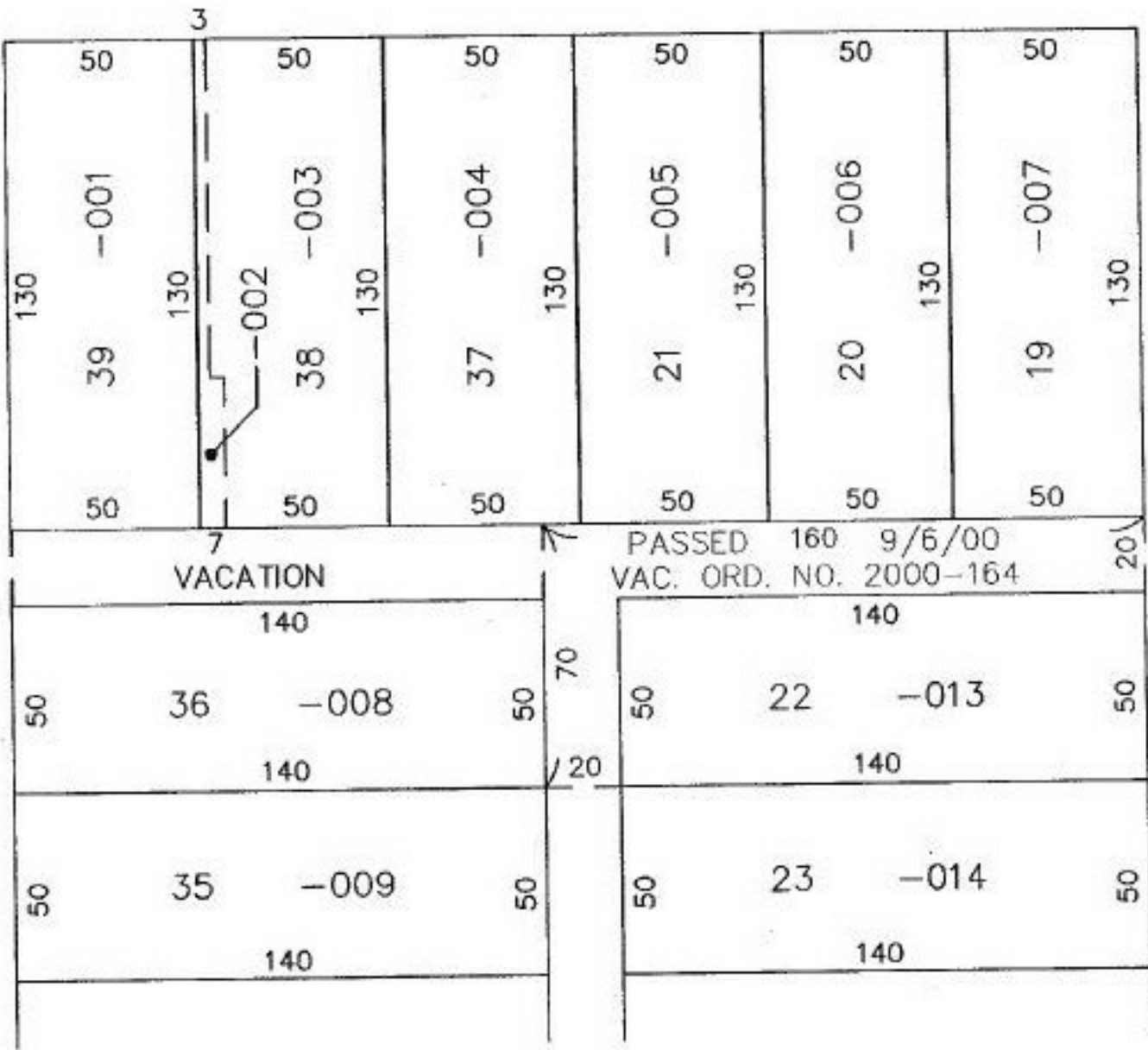
PASSED 9/6/00



LOWELL ST. 66'

LAWRENCE ST. 50'

ELBE ST. 50'



PASSED 160 9/6/00  
VAC. ORD. NO. 2000-164

## SPLITS/DEEDS PROCESSED

LORAIN COUNTY TAX MAP DEPARTMENT  
226 MIDDLE AVE. ELYRIA, OHIO

SURVEYED BY: NONE

CLOSURE: 0.00 : 10.000

MAP PAGE(S): 6-98

APPROVED BY: IJS DATE: 01/05/01

SCALE: 1" = 50' PRIOR INSTRUMENT: NONE