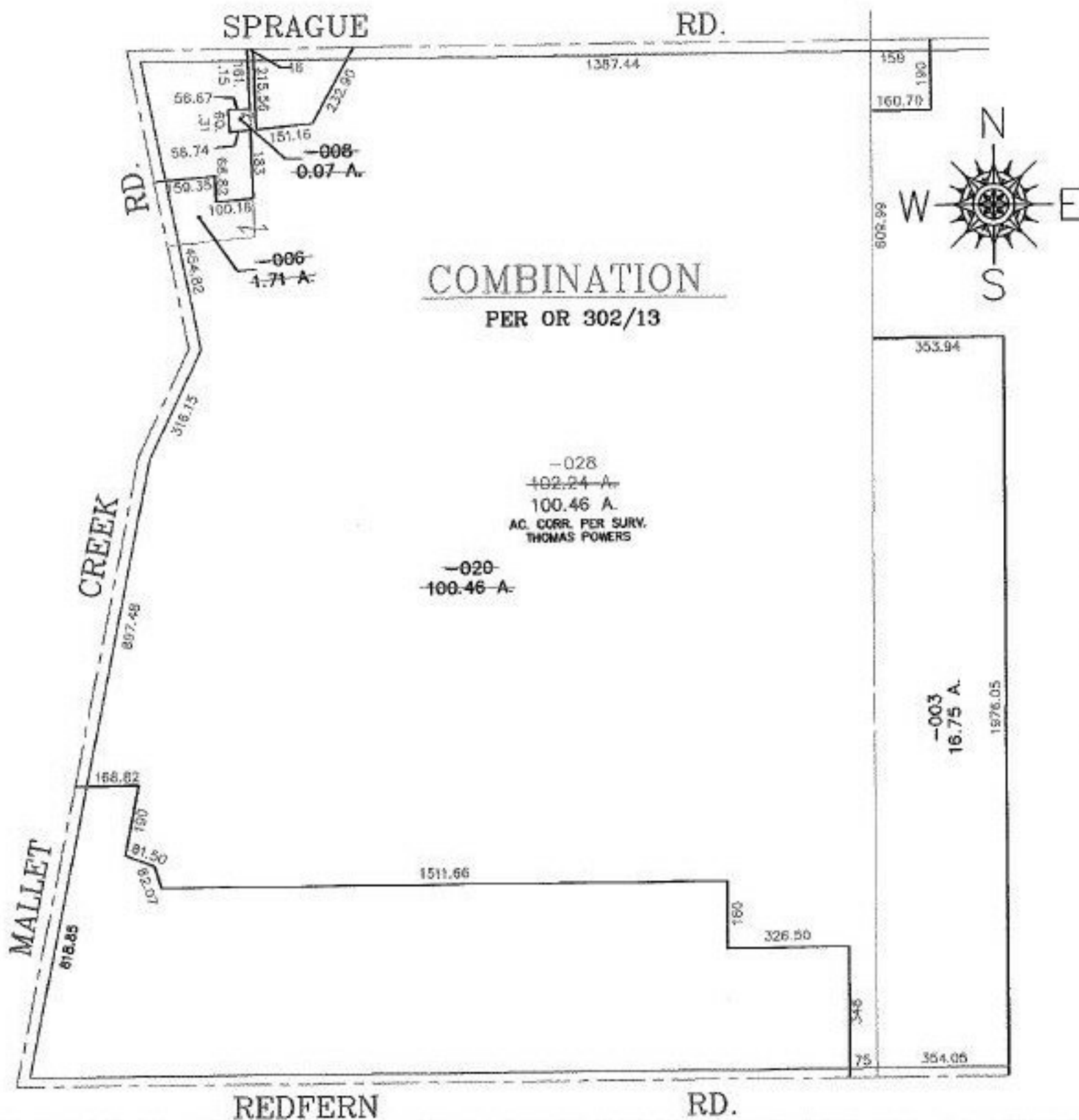


PARENT PARCEL: 12-00-021-105-006, -008, -020

CHILD PARCEL: 12-00-021-105-028

STARTING POINT: CL OF MALLET CREEK & CL OF REDFERN RD.

NO. 00444-X



SPLITS/DEEDS PROCESSED
 LORAIN COUNTY TAX MAP DEPARTMENT
 226 MIDDLE AVE. ELYRIA, OHIO

SURVEYED BY: THOMAS POWERS
 CLOSURE: 0.01 : 10.000
 MAP PAGE(S): 12-00-020-A, 12-00-021-A & B
 APPROVED BY: TJS DATE: 11/01/00
 SCALE: 1" = 400' PRIOR INSTRUMENT: OR 302/13