

COPYRIGHT 1962  
 U.S. CODE, TITLE 17  
 LORAIN COUNTY, OHIO  
 Reproduced by  
 Allied Microfilm Corp.  
 Akron, Ohio

**SHEFFIELD VILLAGE**

Scale of Supplement  
 1" = 200'

Scale 1" = 200'

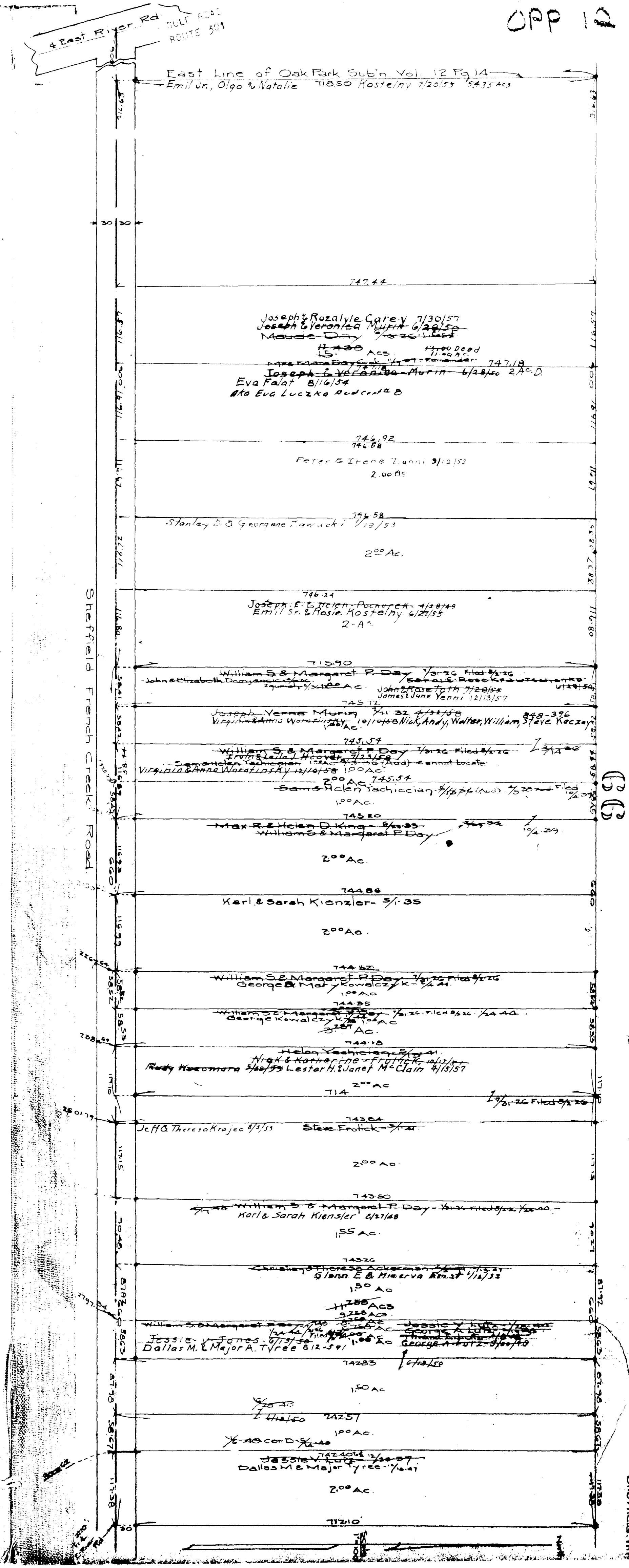
4 East River Rd. GULF ROAD ROUTE 301

East Line of Oak Park Sub'n. Vol. 12 Pg. 14  
Emil Jr., Olga & Natalie 7/20/55 5435 Ac

Sheffield French Creek Road

# SHEFFIELD VILLAGE

COPYRIGHT 1962  
U.S. CODE, TITLE 17  
LORAIN COUNTY, OHIO  
Reproduced by,  
Allied Microfilm Corp.  
Akron, Ohio



SHEFFIELD TWP

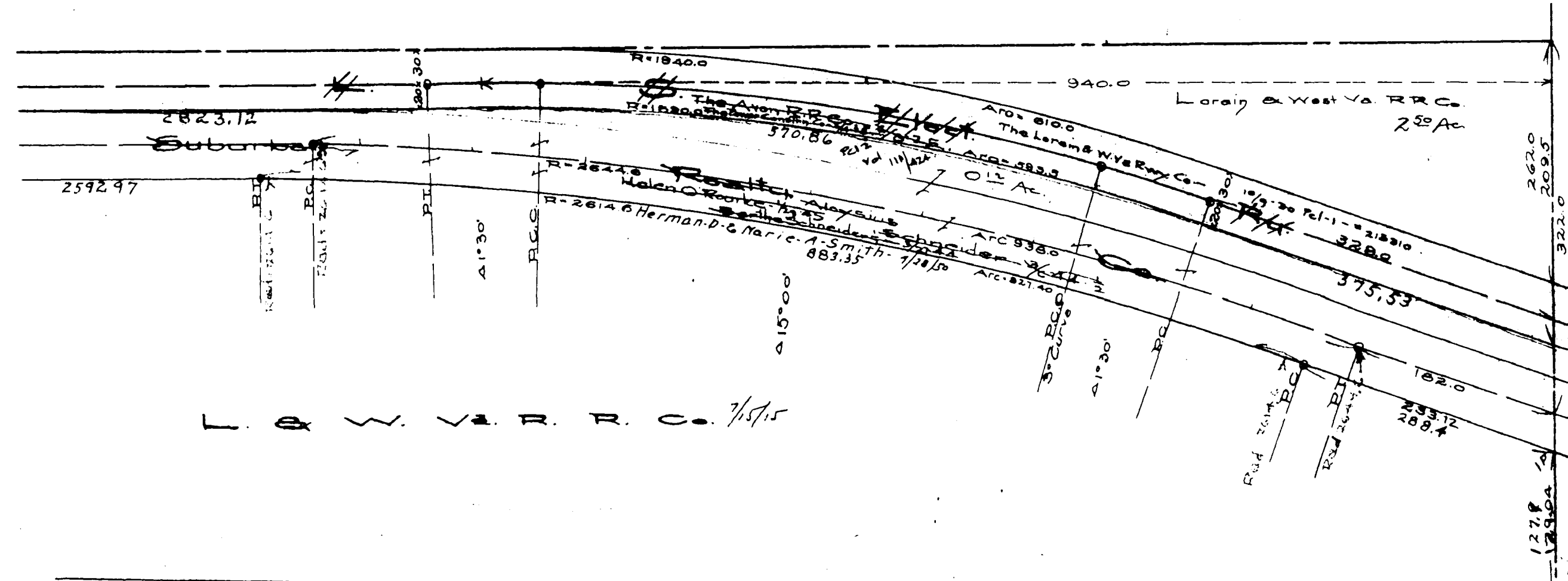
Detail of Lake Shore Elect Ry Cos. R. of W.

17

Original Lot 67

N

Scale 1"=50'

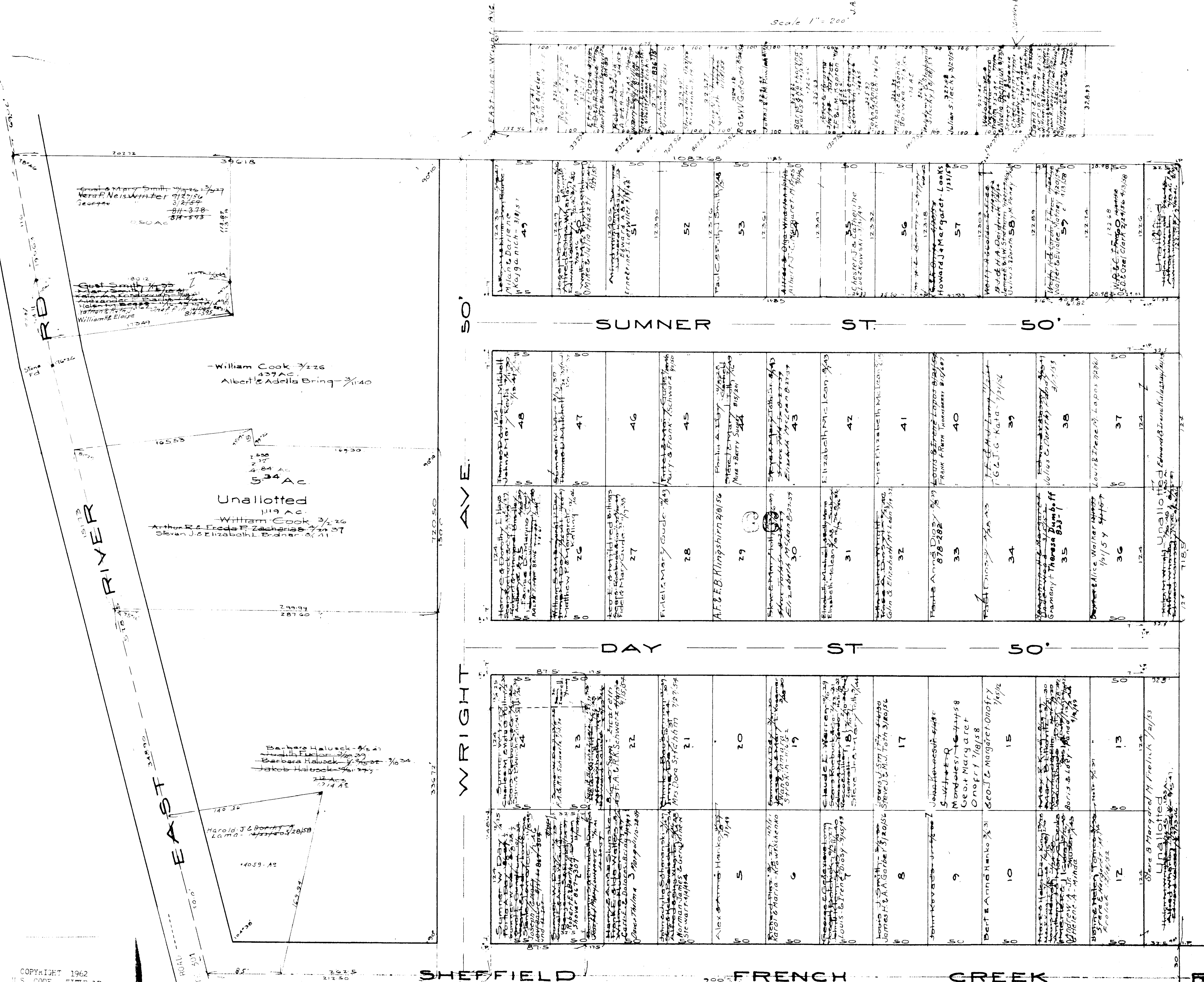


COPYRIGHT 1962  
 U.S. CODE, TITLE 17  
 LORAIN COUNTY, OHIO  
 Reproduced by,  
 Allied Microfilm Corp.  
 Akron, Ohio

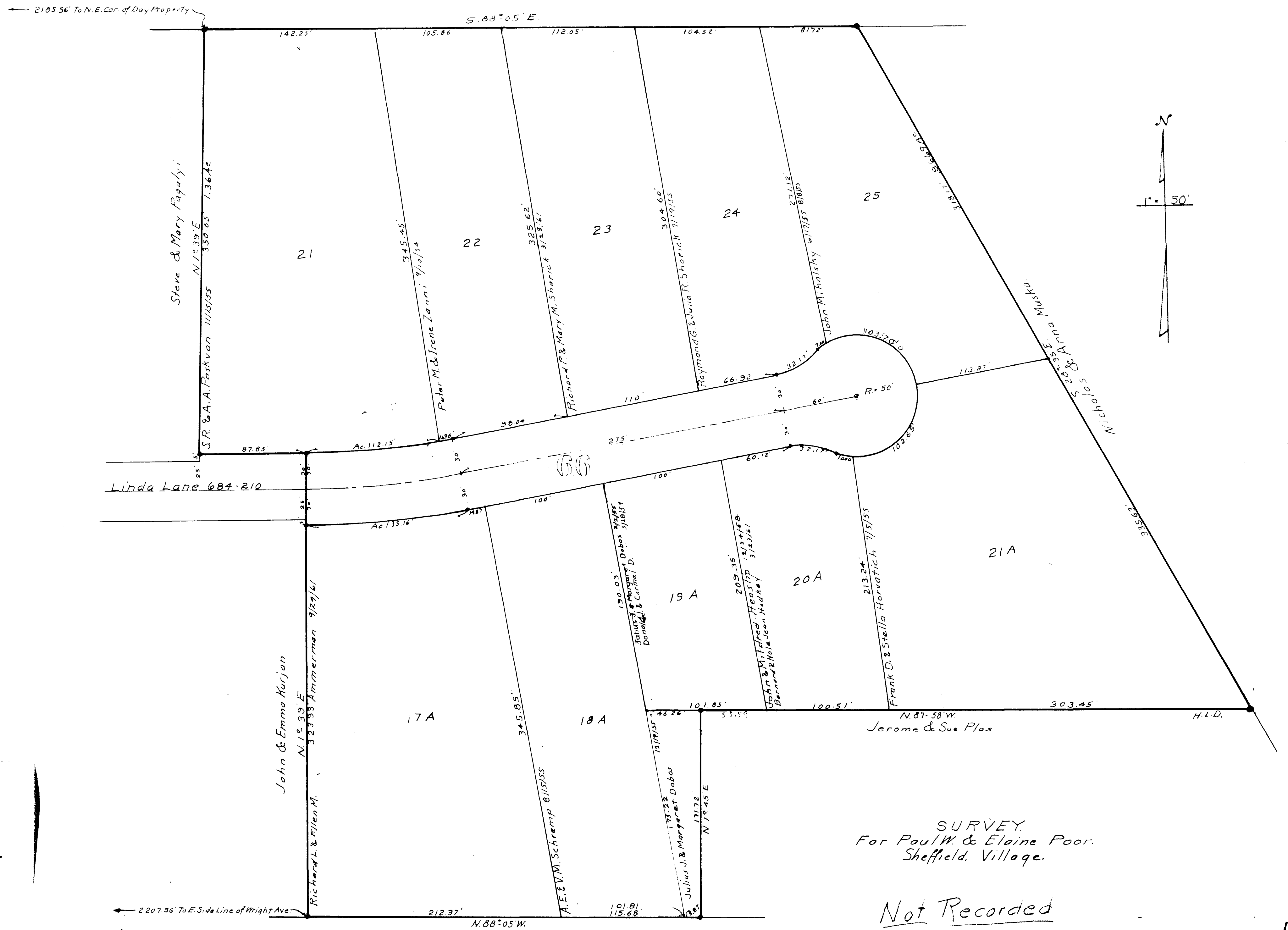
SHEFFIELD  
 VILLAGE

COPYRIGHT 1962  
U.S. CODE, TITLE 17  
LORAIN COUNTY, OHIO  
Reproduced by,  
Allied Microfilm Corp.  
Akron, Ohio

# SHEFFIELD VILLAGE



Scale 1" = 200'



COPYRIGHT 1962  
U.S. CODE, TITLE 17  
LORAIN COUNTY, OHIO  
Reproduced by,  
Allied Microfilm Corp.  
Akron, Ohio

SURVEY  
For Paul W. & Elaine Poor.  
Sheffield Village.

Not Recorded

SHEFFIELD  
VILLAGE