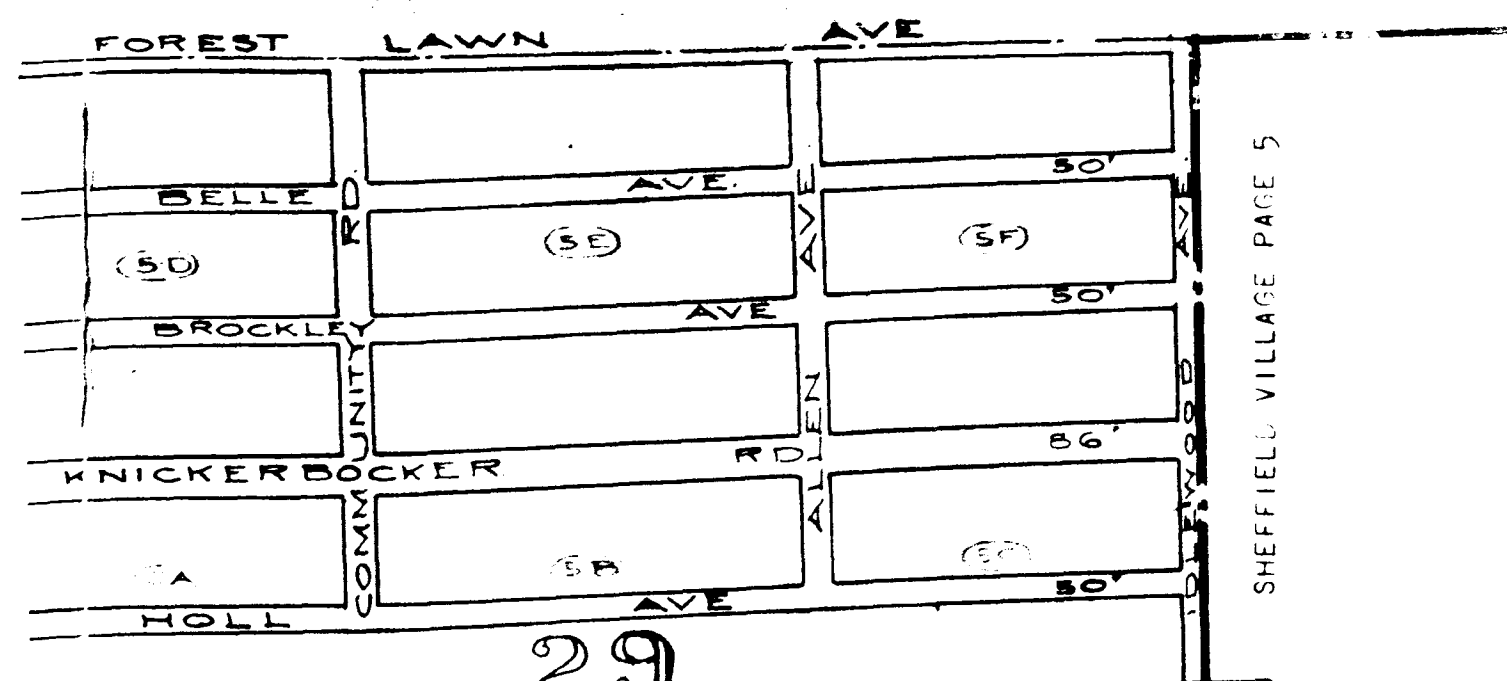


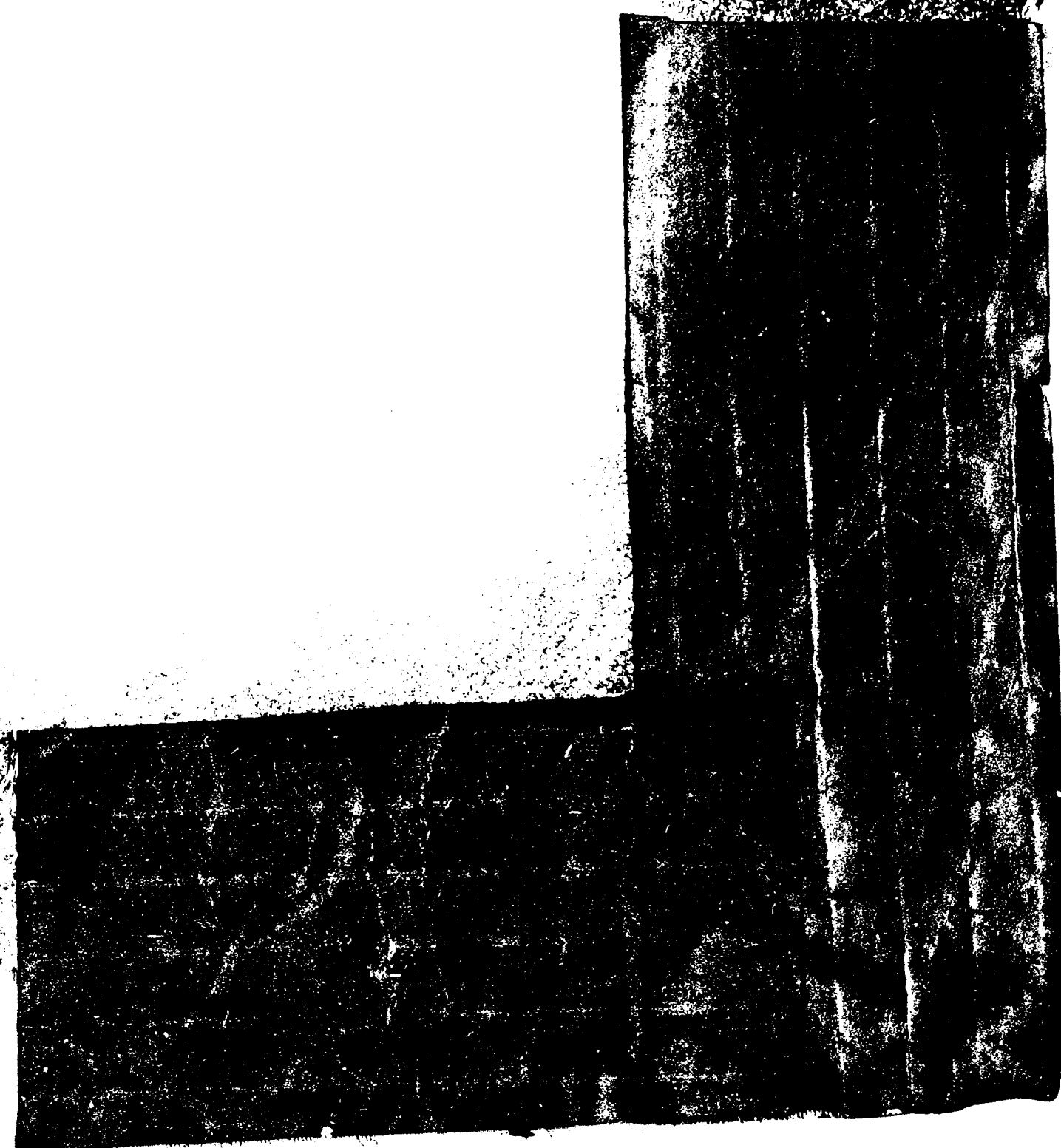
5



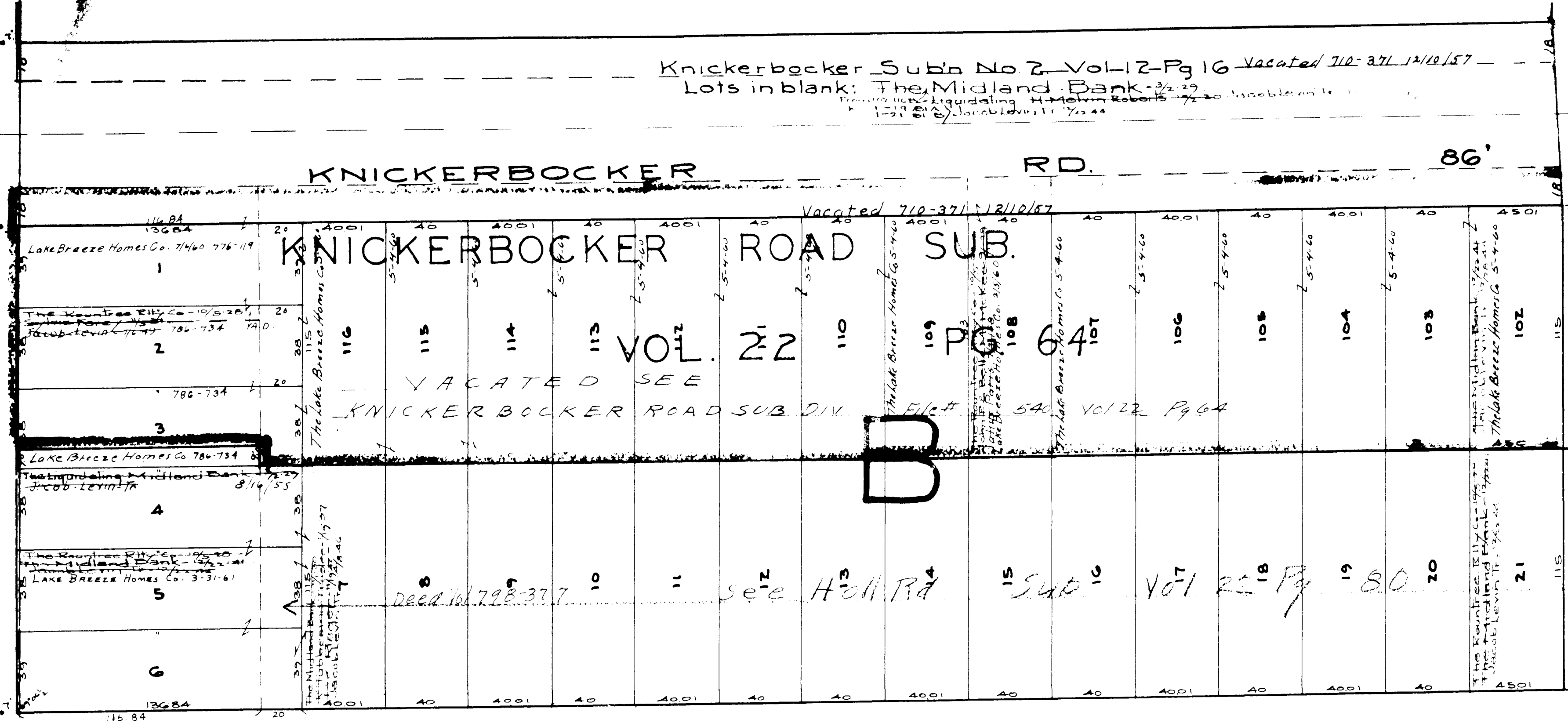
29  
 Boundary Line of Brookside Township  
 Sheffield Village 1/2 25  
 SHEFFIELD VILLAGE PAGE 5

COPYRIGHT 1962  
 U.S. CODE, TITLE 17  
 LORAIN COUNTY, OHIO  
 Reproduced by,  
 Allied Microfilm Corp.  
 Akron, Ohio

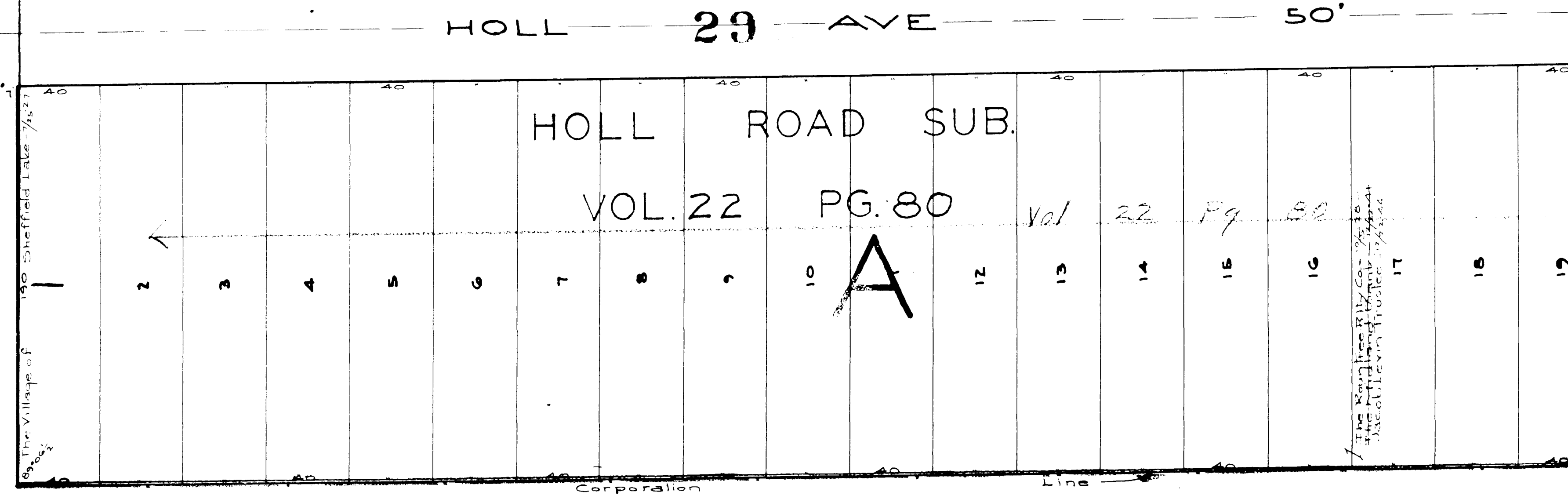
SHEFFIELD LAKE  
 VILLAGE



LAKE BREEZE RD. 60'



LAKE BREEZE RD. 60'



Z. Y. C. & ST. L. R. R.

COPYRIGHT 1962 U.S. CODE, TITLE 17 LORAIN COUNTY, OHIO Reproduced by, Allied Microfilm Corp. Akron, Ohio

SHEFFIELD LAKE VILLAGE

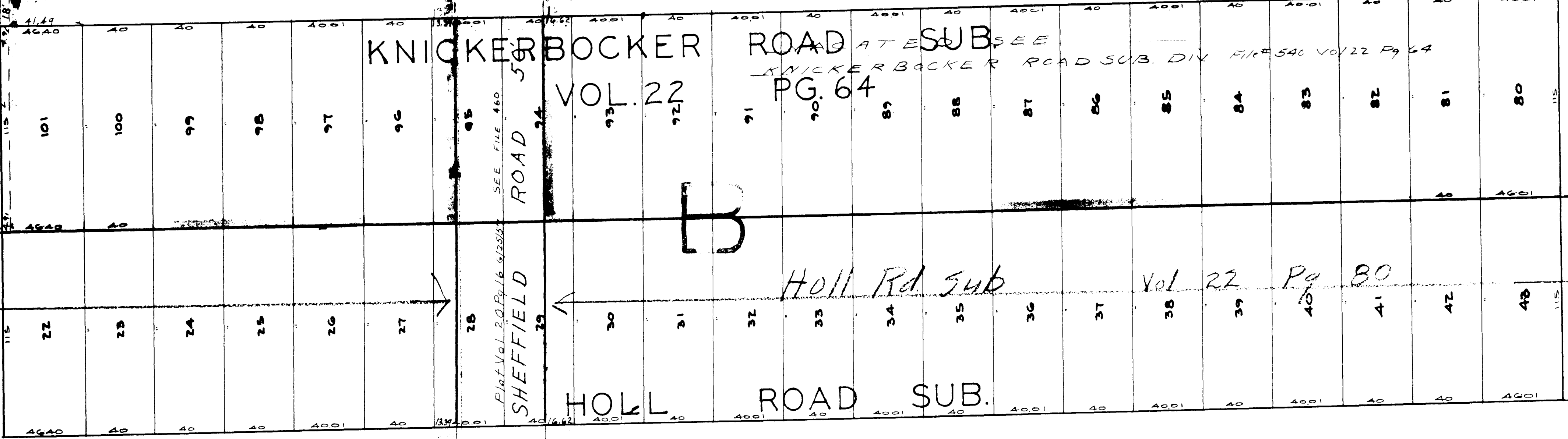
Vacated 710-321 12/10/57

Knickerbocker Subn No 2 Vol 22 Pg 16  
Lots in blank: The Midland Bank

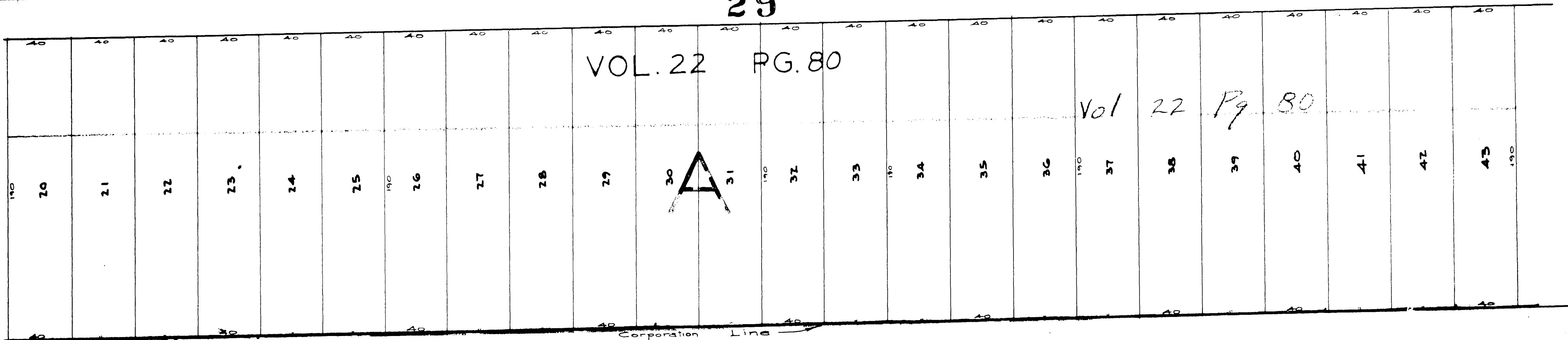
KNICKERBOCKER ROAD 86'

Vacated 710-371 12/10/57

COMMUNITY RD  
Vacated 1918-1900  
The Lake Shore Homes Co



HOLL AVE. 29 50'

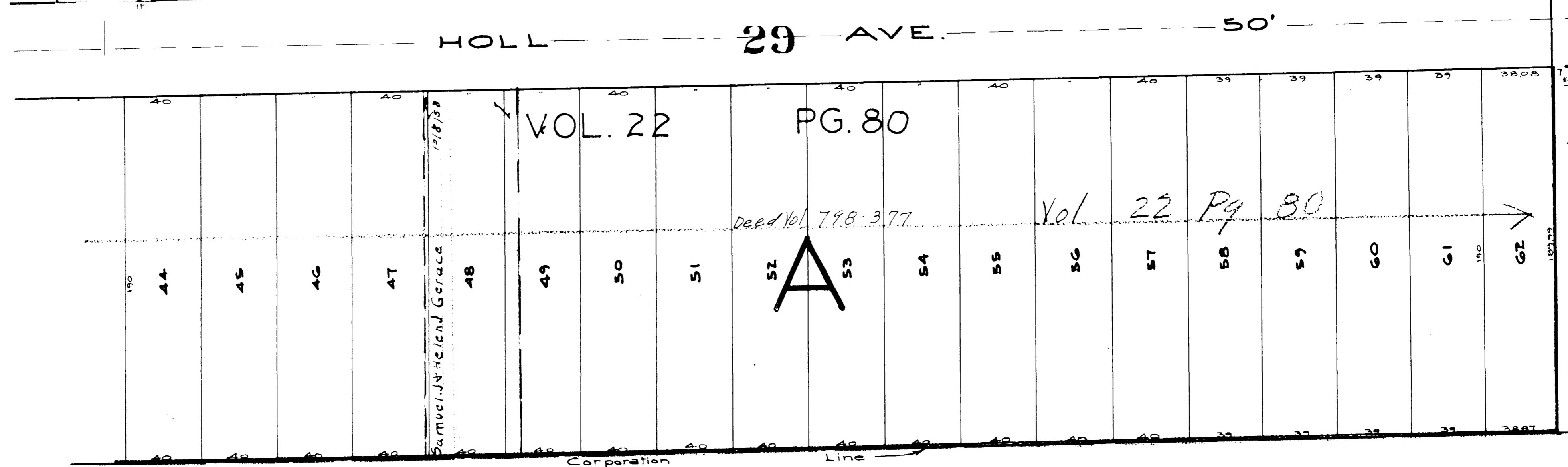
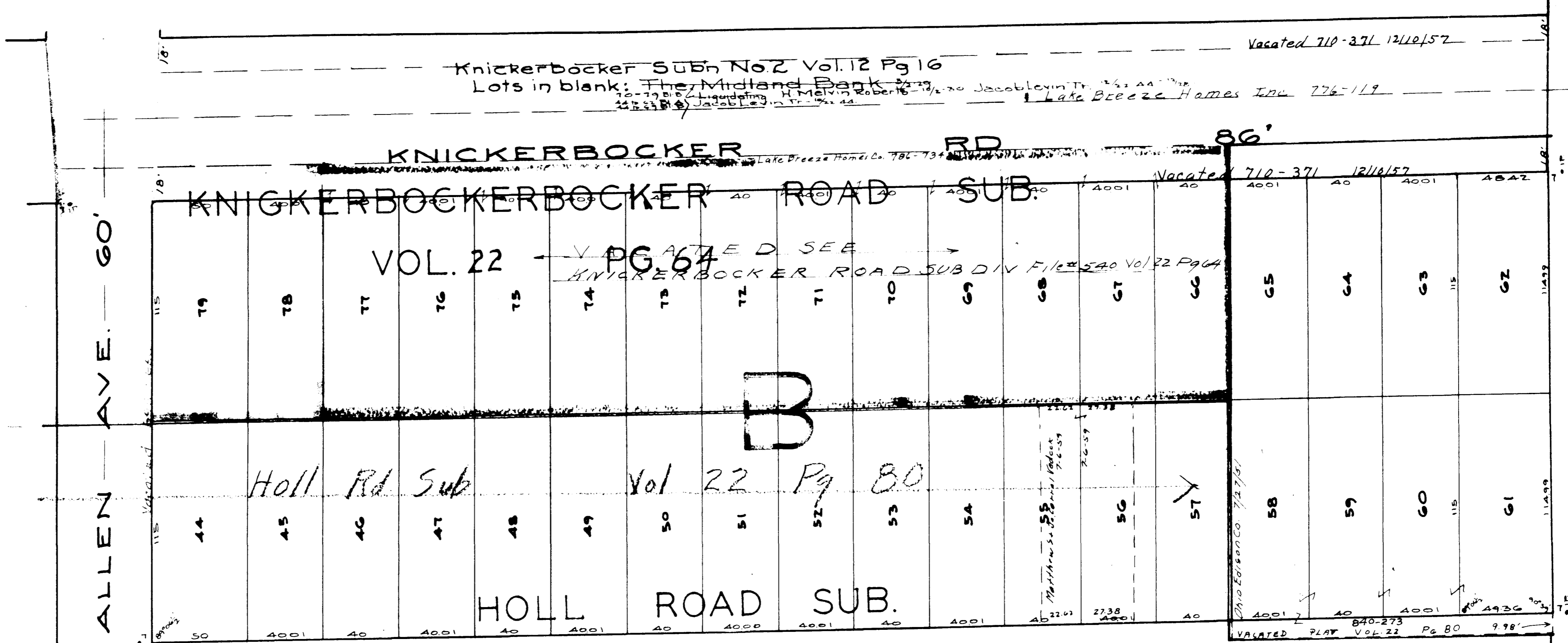


Z Y C & St L R R

COPYRIGHT 1962  
U.S. CODE, TITLE 17  
LORAIN COUNTY, OHIO

Reproduced by,  
Allied Microfilm Corp.  
Akron, Ohio

SHEFFIELD LAKE  
VILLAGE



Z. Y. C. & ST. L. R. R.

COPYRIGHT 1962  
U.S. CODE, TITLE 17  
LORAIN COUNTY, OHIO  
Reproduced by  
Allied Microfilm Corp.  
Akron, Ohio

SHEFFIELD LAKE  
VILLAGE

Knickerbocker Sub No 2 Vol. 12 Pg 16  
Lots in blank: The Midland Bank

SHEFFIELD LAKE VILLAGE

COPYRIGHT 1962  
U.S. CODE, TITLE 17  
LORAIN COUNTY, OHIO  
Reproduced by:  
Allied Microfilm Corp.  
Akron, Ohio

LAKE

BREEZE

RD.

60'

1	2	3	4	5	6	7	8	9	10	11	12	13	14	15	16	17	18	19	20	21
11282	11283	11284	11285	11286	11287	11288	11289	11290	11291	11292	11293	11294	11295	11296	11297	11298	11299	11300	11301	11302
11282	11283	11284	11285	11286	11287	11288	11289	11290	11291	11292	11293	11294	11295	11296	11297	11298	11299	11300	11301	11302
11282	11283	11284	11285	11286	11287	11288	11289	11290	11291	11292	11293	11294	11295	11296	11297	11298	11299	11300	11301	11302

1	2	3	4	5	6	7	8	9	10	11	12	13	14	15	16	17	18	19	20	21
11303	11304	11305	11306	11307	11308	11309	11310	11311	11312	11313	11314	11315	11316	11317	11318	11319	11320	11321	11322	11323
11303	11304	11305	11306	11307	11308	11309	11310	11311	11312	11313	11314	11315	11316	11317	11318	11319	11320	11321	11322	11323
11303	11304	11305	11306	11307	11308	11309	11310	11311	11312	11313	11314	11315	11316	11317	11318	11319	11320	11321	11322	11323

1	2	3	4	5	6	7	8	9	10	11	12	13	14	15	16	17	18	19	20	21
11324	11325	11326	11327	11328	11329	11330	11331	11332	11333	11334	11335	11336	11337	11338	11339	11340	11341	11342	11343	11344
11324	11325	11326	11327	11328	11329	11330	11331	11332	11333	11334	11335	11336	11337	11338	11339	11340	11341	11342	11343	11344
11324	11325	11326	11327	11328	11329	11330	11331	11332	11333	11334	11335	11336	11337	11338	11339	11340	11341	11342	11343	11344

KNICKERBOCKER RD.

86'

BROCKLEY 29 AVE. 50'

50'

BELLE AVE. 50'

50'

FORESTLAWN AVE.

60'

KNICKERBOCKER ROAD SUB.  
VOL. 22 PG 64  
KNICKERBOCKER SUB. DIV. FILE # 540

COMMUNITY RD. 60'		FORESTLAWN AVE	
22	101	22	101
23	VACATED	23	100
24	VACATED	24	99
25	VACATED	25	98
26	VACATED	26	97
27	VACATED	27	96
28	VACATED	28	95
29	VACATED	29	94
30	VACATED	30	93
31	VACATED	31	92
32	VACATED	32	91
33	VACATED	33	90
34	VACATED	34	89
35	VACATED	35	88
36	VACATED	36	87
37	VACATED	37	86
38	VACATED	38	85
39	VACATED	39	84
40	VACATED	40	83
41	VACATED	41	82
42	VACATED	42	81
43	VACATED	43	80
ALLEN RD. 86'		BROCKLEY AVE. 50'	
SHEFFIELD		D	
KNICKERBOCKER ROAD SUB VOL 22 PG 64		BELLE AVE. 50'	
KNICKERBOCKER RD. 86'		RD. 60'	
ALLEN AVE. 69'		VACATED	

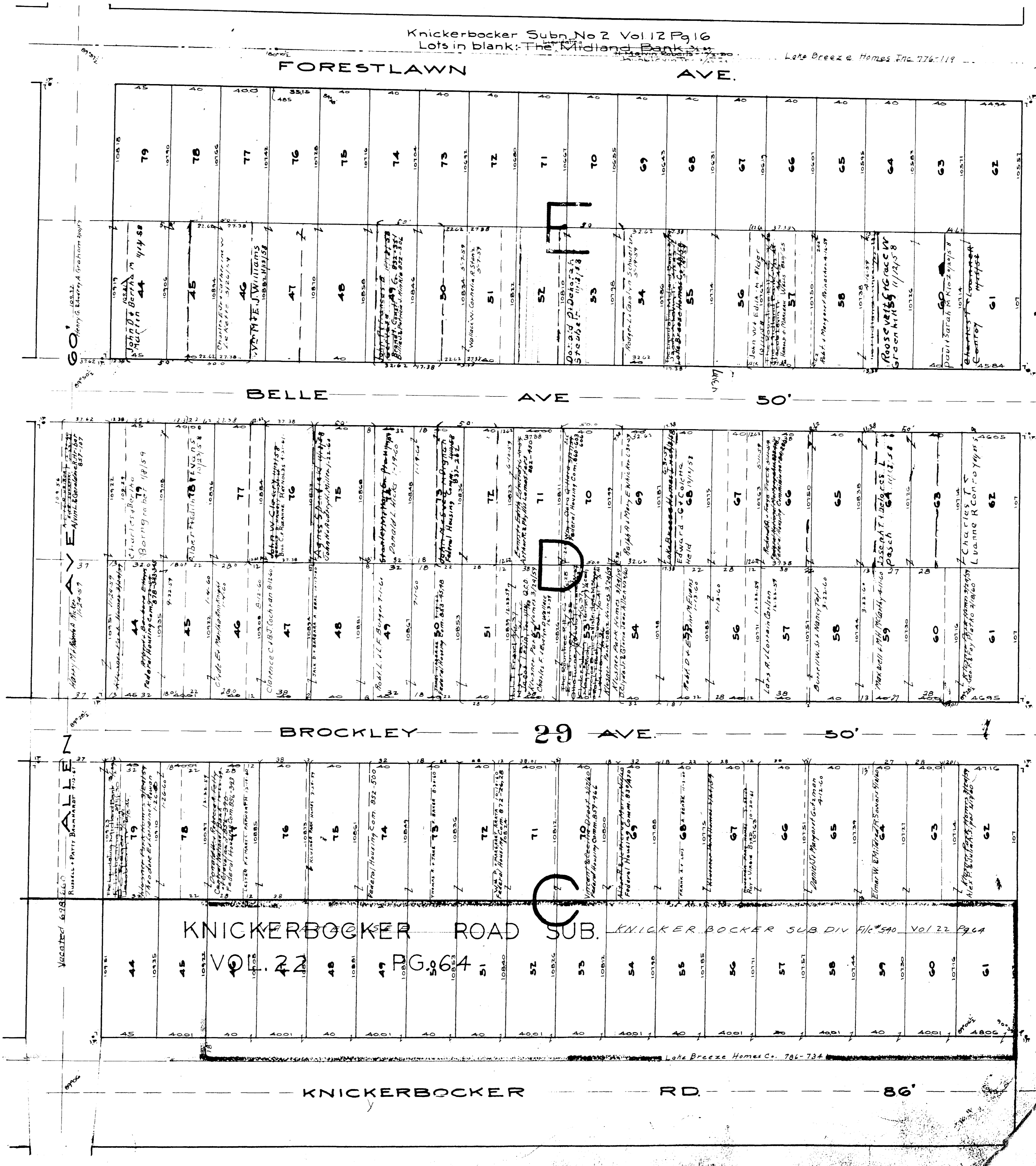
Knickerbocker Subn No 2 Vol 12 Pg 16

Lots in blank: The Midland Bank

Lake Breeze Homes Inc. 776-119

SHEFFIELD LAKE VILLAGE

COPYRIGHT 1962 U.S. CODE, TITLE 17 LORAIN COUNTY, OHIO Reproduced by Allied Microfilm Corp. Akron, Ohio



KNICKERBOCKER ROAD SUB. VOL. 22 PG. 64 KNICKERBOCKER SUB DIV FILE # 540 VOL 22 PG 64

KNICKERBOCKER RD. 86'

IDLEWOOD AVE

Line O L 29'

40.45'

40.45'

# SHEFFIELD VILLAGE

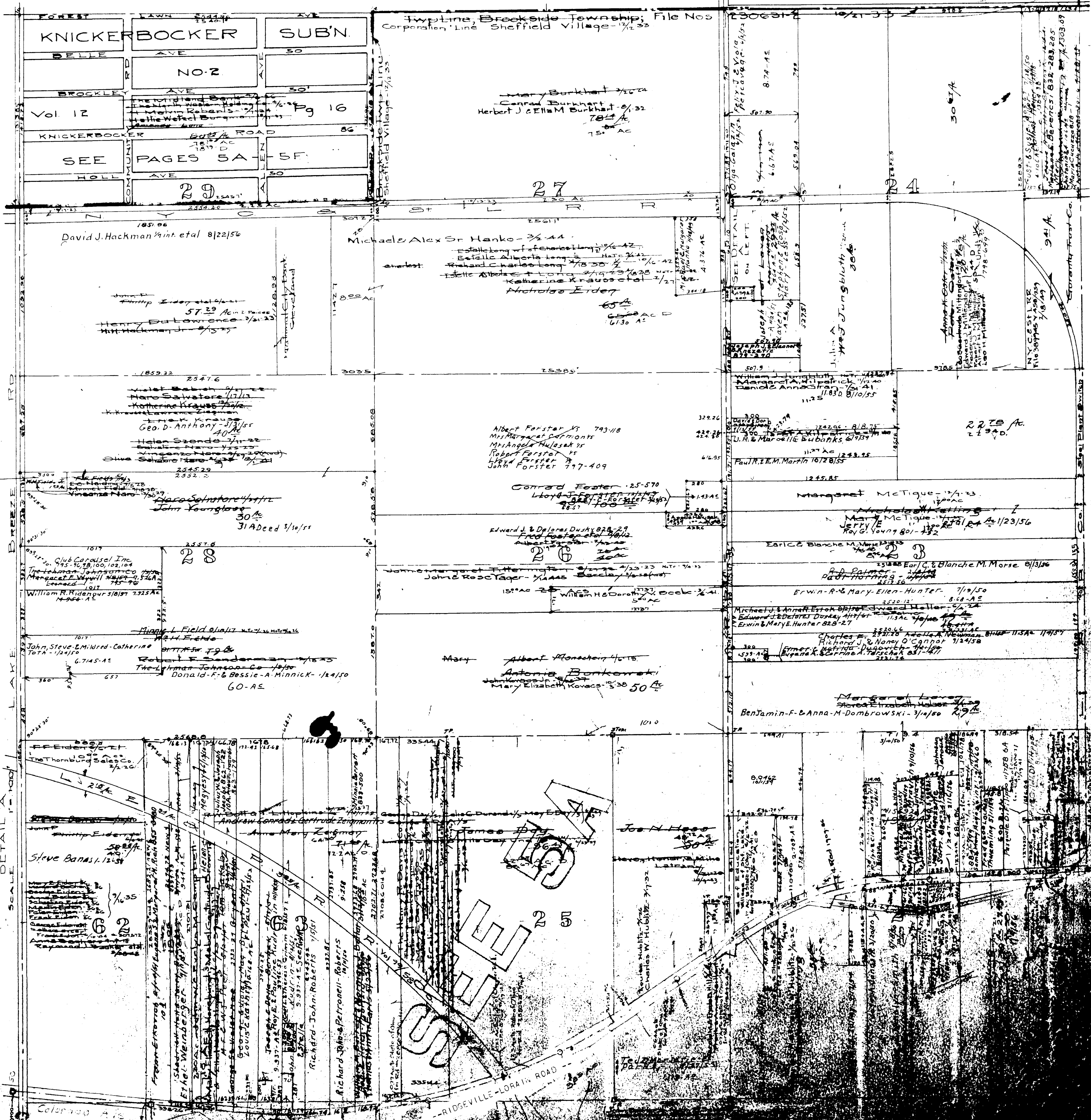
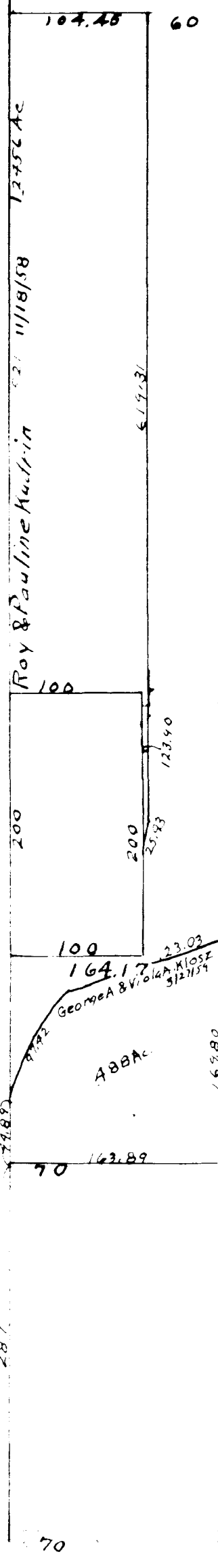
COPYRIGHT 1962  
U.S. GOVERNMENT, TITLE 17  
LOHAIN COUNTY, OHIO

Reproduced by,  
Allied Microfilm Corp.  
Akron, Ohio

SHEFFIELD LAKE VILLAGE PAGE 7

SHEFFIELD TWP.  
North Center Part Scale 1"=40'

OSTER ROAD

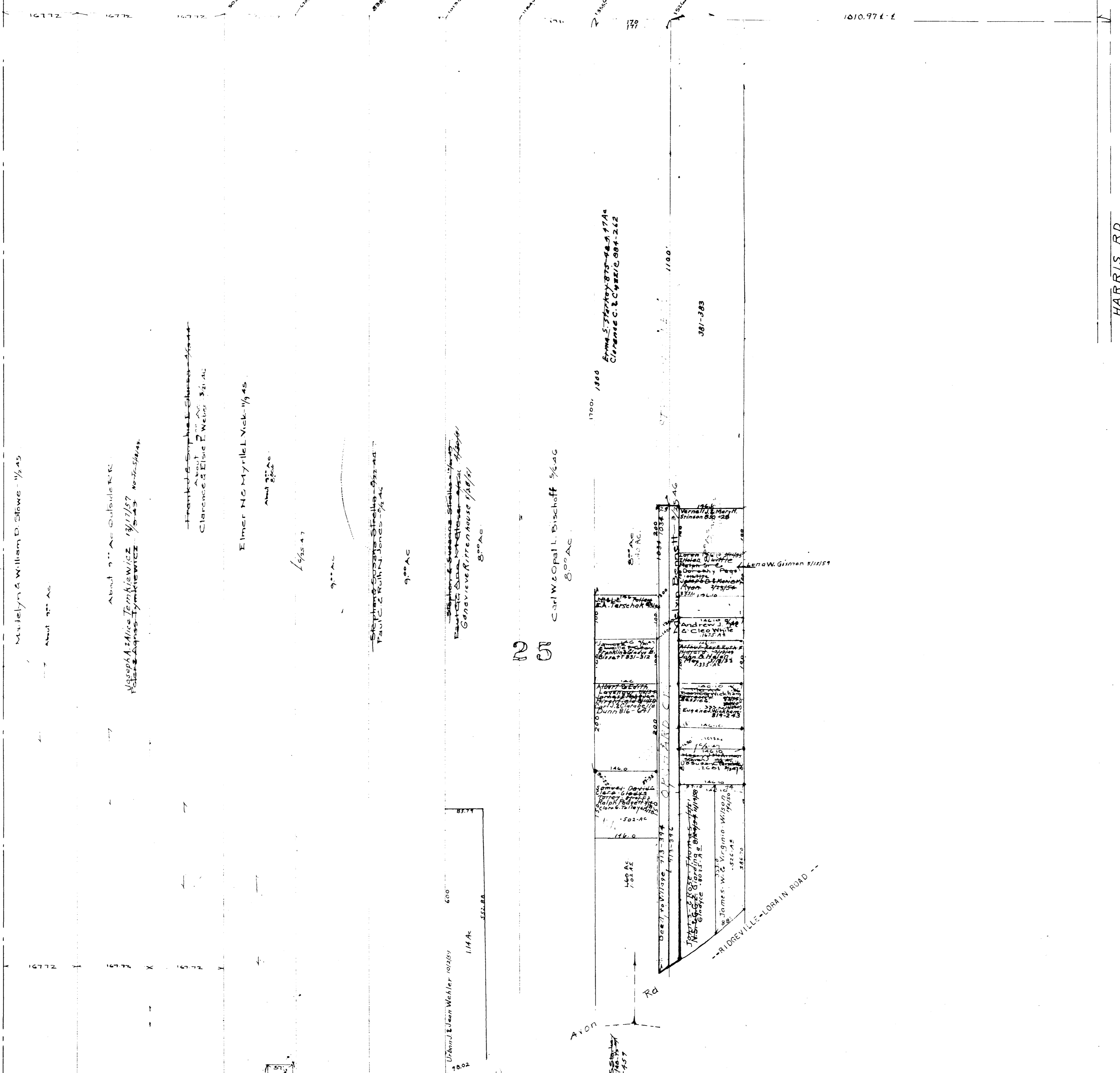


13

3

**FOR SALE**





HARRIS RD

DRIVEVILLE-LORAIN ROAD

Avon Rd

SHEFFIELD VILLAGE

COPYRIGHT 1962  
 U.S. CODE, TITLE 17  
 LORAIN COUNTY, OHIO  
 Reproduced by,  
 Allied Microfilm Corp.  
 Akron, Ohio

1 IN. = 120 FT.

6277

6