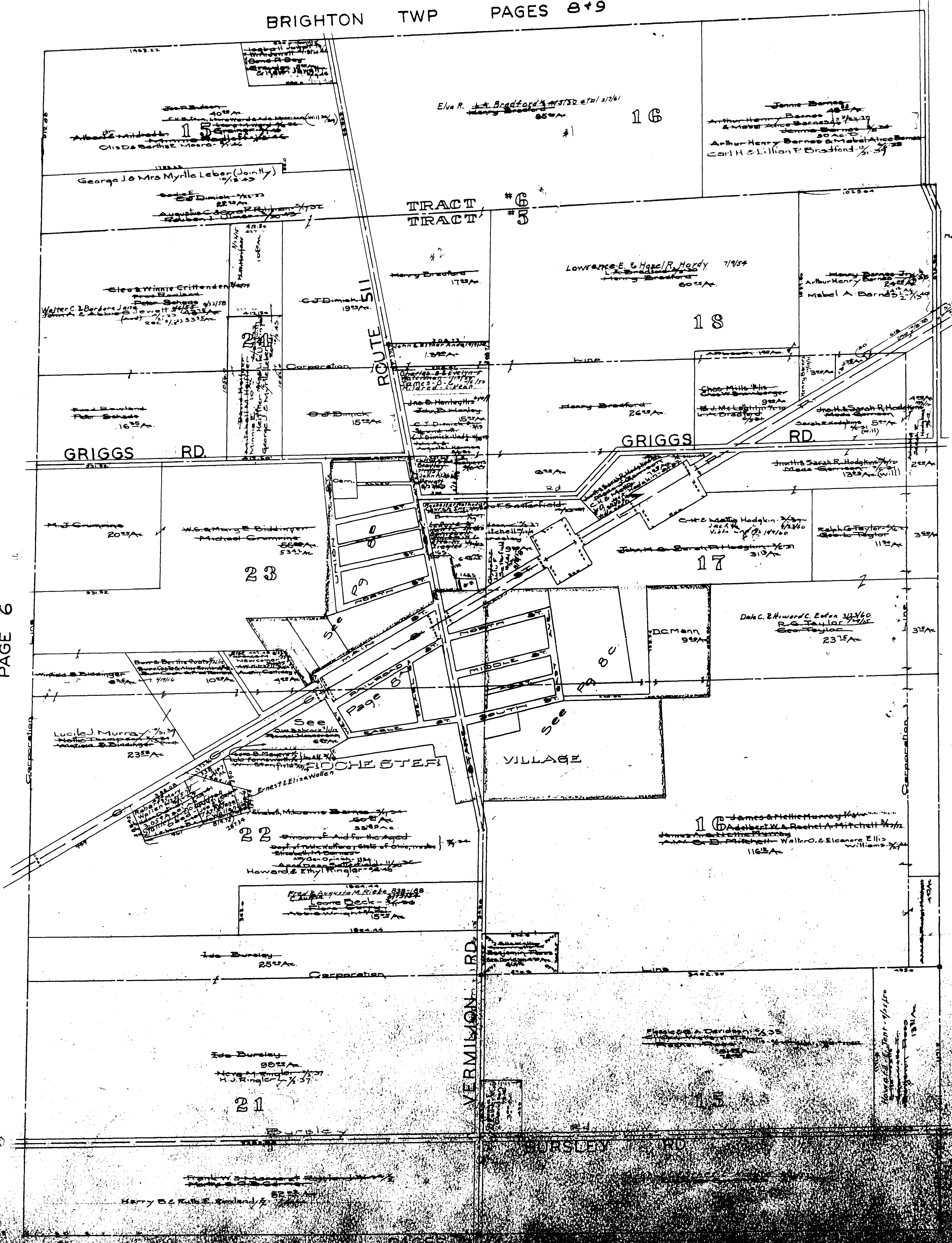


MAP OF ROCHESTER TOWNSHIP

PAGE 6

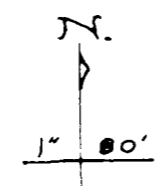
PAGE 5



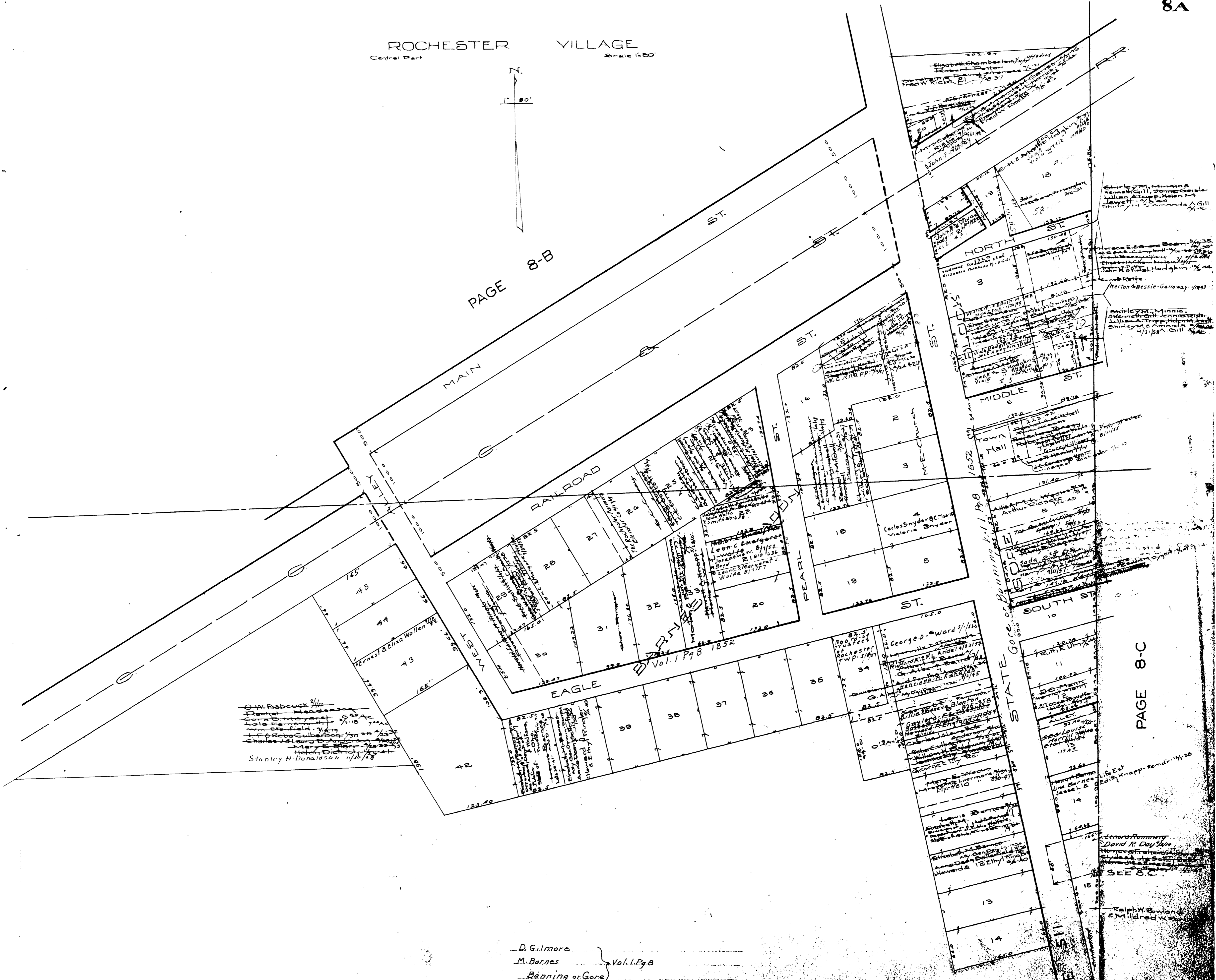
ROCHESTER TWP. North Center Part Scale 1" = 100'



ROCHESTER VILLAGE  
Central Part Scale 1:80'



PAGE 8-B



O.W. Babcock 1/11/44  
Rochester 1/11/44  
George D. Ward 5/1/40  
L. P. Roberts 1/11/44  
Charles J. Adams 1/11/44  
Mary E. Starr 1/11/44  
Henry D. Smith 1/11/44  
Stanley H. Donaldson 1/11/44

D. Gilmore }  
M. Barnes } Vol. 1, Pg. 8  
Banning at Gore }

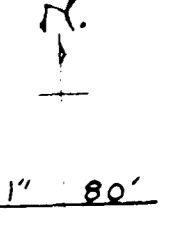
PAGE 8-C

MAP OF  
ROCHESTER TOWNSHIP

COPYRIGHT 1962  
U.S. CODE, TITLE 17  
LORAIN COUNTY, OHIO  
Reproduced by,  
Allied Microfilm Corp.  
Akron, Ohio

GRIGGS ROAD

ROCHESTER VILLAGE  
Center Part  
Scale 1" = 80'



D. Gilmore  
M. Barnes (Barns) Vol. 1 Pg 8 1852  
Banning & Gore  
Wheeler & Mitchell 1 27 1859  
G. Gilmore 1 32 1863  
Village 3 24 1887

Note: Occupation is indicated in Red.

PAGE 8-A

MAP OF  
ROCHESTER TOWNSHIP

COPYRIGHT 1962  
U.S. CODE, TITLE 17  
LORAIN COUNTY, OHIO

Reproduced by,  
Allied Microfilm Corp.  
Akron, Ohio

ROUTE 511

PAGE 8-A



ROCHESTER VILLAGE  
Central Part  
Scale 1"=80'



PAGE 8-A

MAP OF  
ROCHESTER TOWNSHIP

COPYRIGHT 1962  
U.S. CODE, TITLE 17  
LORAIN COUNTY, OHIO  
Reproduced by,  
Allied Microfilm Corp.  
Akron, Ohio