

4

SEE
PAGES

28
5-A & 5-C

2

8

SEE

34

PAGE 5-B

CRESLEY
ISSUE
NO. 1
VOL. 21
PG. 48

SEE
BETH'S

Richard J. Noll - 8/1/52
George Ruth
Sim Kovich - 8/1/52

Joseph B. & Frances Holt Wick - 8/1/51

Charles Machovina - 6/3/52
SEE DETAIL
OPPOSITE

SEE DETAIL
OPPOSITE

SEE DETAIL
OPPOSITE

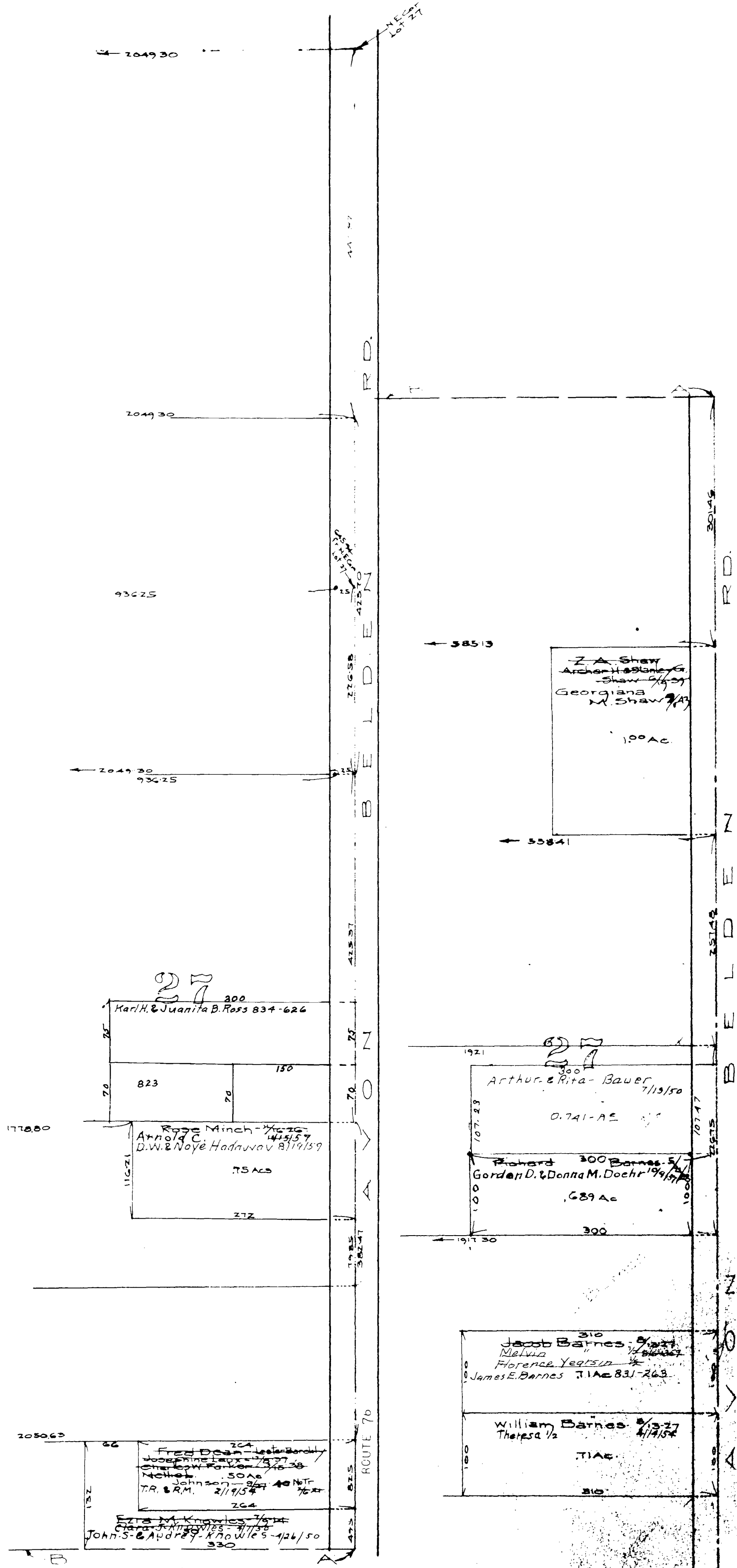
SEE DETAIL
OPPOSITE

COPYRIGHT 1962
U.S. CODE, TITLE 17
LORAIN COUNTY, OHIO
Reproduced by
Allied Microfilm Corp.
Akron, Ohio

RIDGEVILLE
TOWNSHIP

636

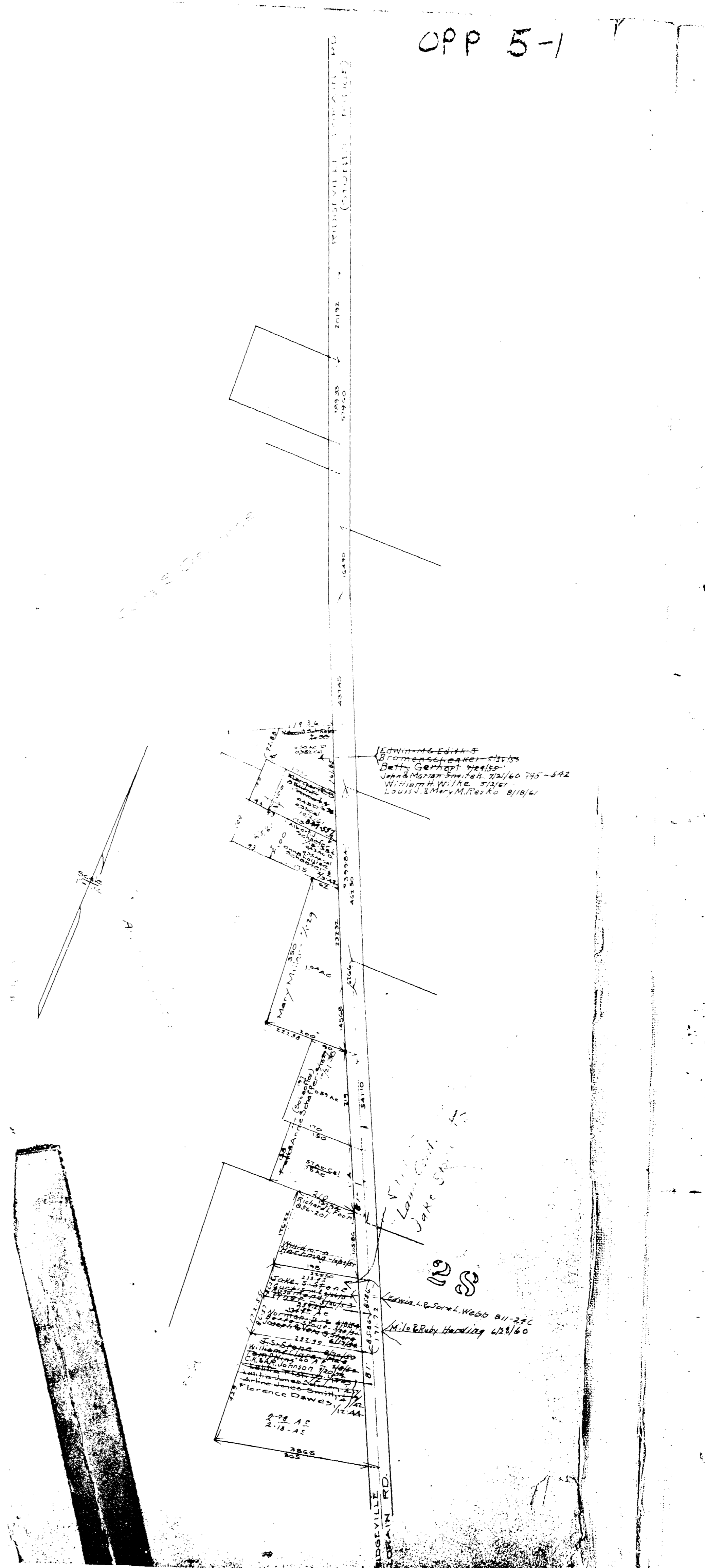
14



COPYRIGHT 1962
 U.S. CODE, TITLE 17
 LORAIN COUNTY, OHIO
 Reproduced by,
 Allied Microfilm Corp.
 Akron, Ohio

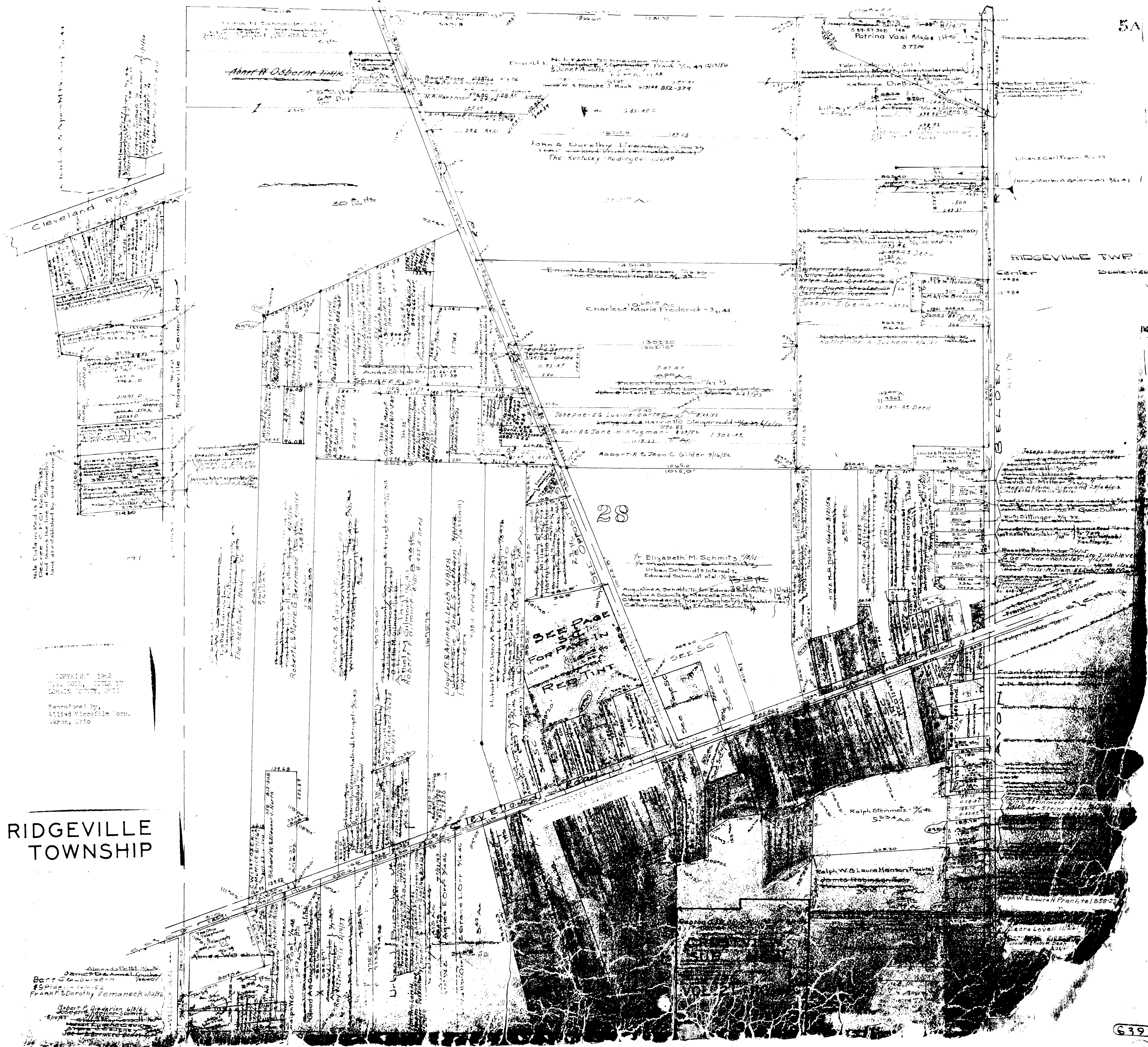
RIDGEVILLE
 TOWNSHIP

OPP 5-1



COPYRIGHT 1962
 U.S. CODE, TITLE 17
 LORAIN COUNTY, OHIO
 Reproduced by,
 Allied Microfilm Corp.
 Akron, Ohio

RIDGEVILLE
 TOWNSHIP



Note: Data in field is from
 Dec. 10, 1957
 and shows the line of
 land as established by said
 bearing.

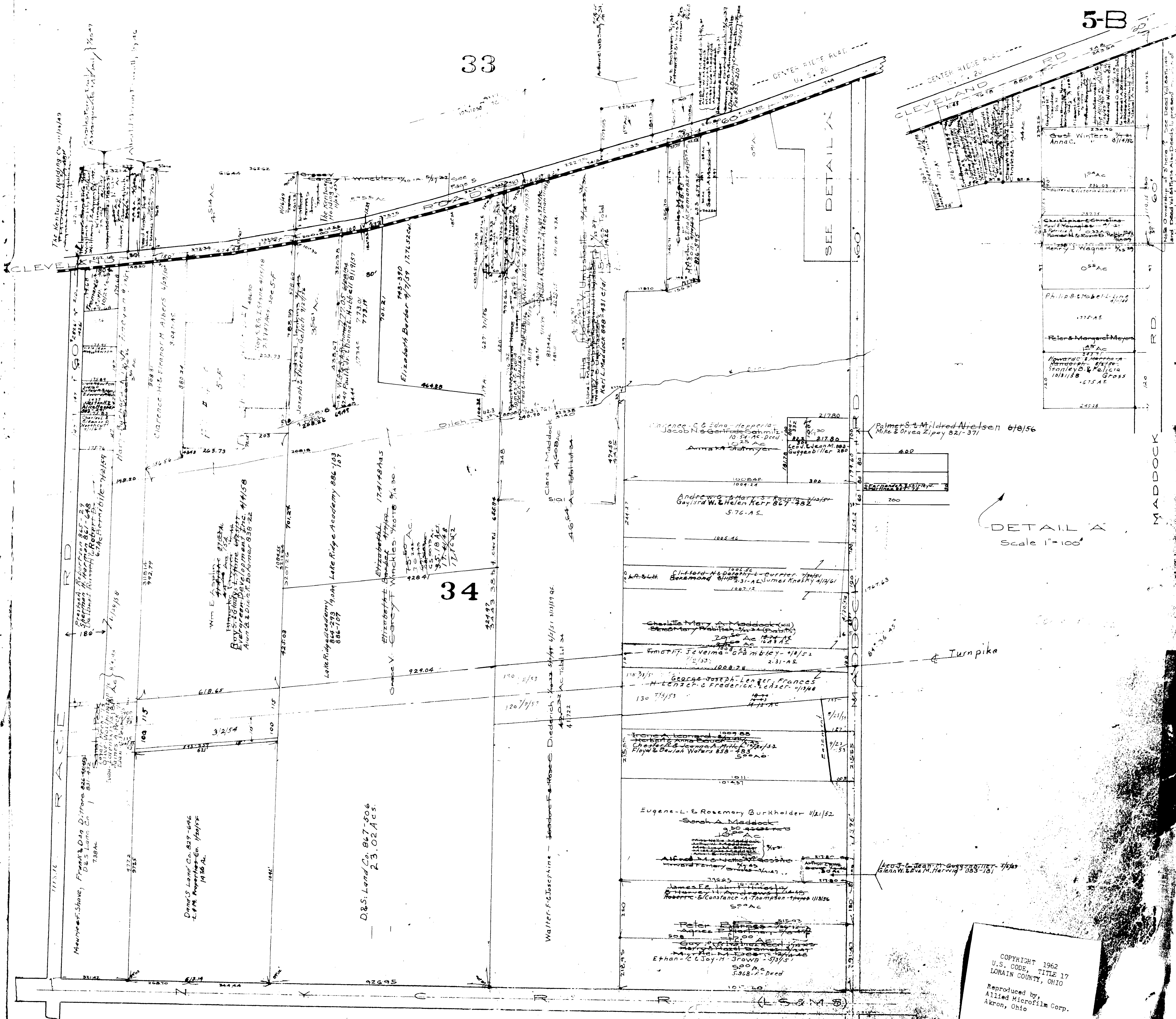
COPYRIGHT 1952
 U.S. GOVERNMENT PRINTING OFFICE
 LOHAS, OHIO, 45030

Reproduced by
 Allied Microfilm Corp.
 Akron, Ohio

RIDGEVILLE
 TOWNSHIP

Alameda Beth 1/1/52
 James B. & Annal Louise
 Bart J. & Louise 1/1/52
 15 Pieces - 1/1/52
 Frank & Dorothy Zemanek 1/1/56

Robert F. Dearden 6/15/61
 Josephine Schmitz
 6/1/52



COPYRIGHT 1962
 U.S. CODE, TITLE 17
 LORAIN COUNTY, OHIO
 Reproduced by,
 Allied Microfilm Corp.
 Akron, Ohio

**RIDGEVILLE
 TOWNSHIP**

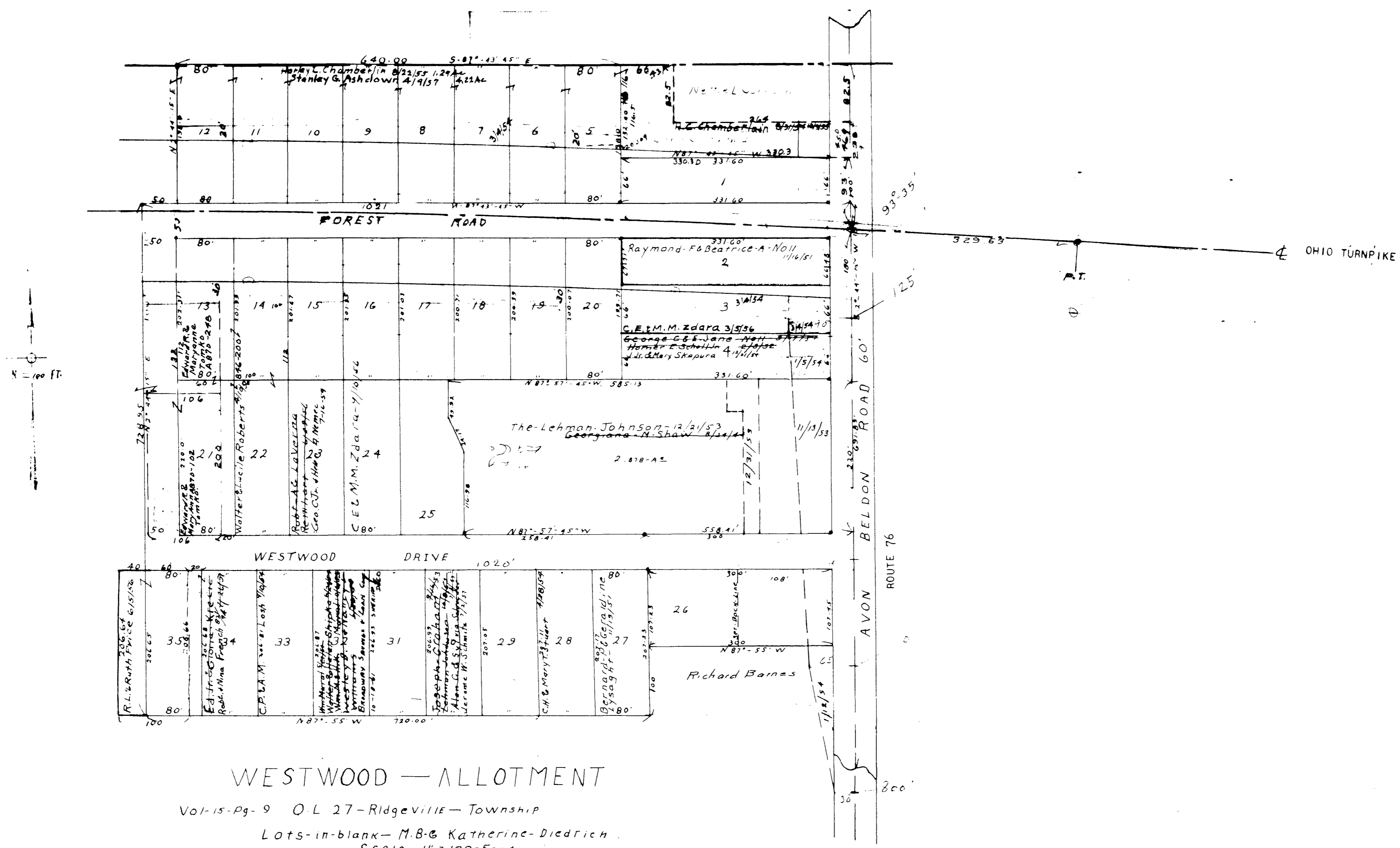


CRESTVIEW SUB. NO. 1
VOL. 21 PG. 48

COPYRIGHT 1962
U.S. CODE, TITLE 17
LORAIN COUNTY, OHIO
Reproduced by,
Allied Microfilm Corp.
Akron, Ohio

RIDGEVILLE
TOWNSHIP

BELDEN-AVON ROAD - ROUTE 76



WESTWOOD - ALLOTMENT

Vol-15-Pg-9 O. L. 27 - Ridgeville - Township
 Lots-in-blank - M.B.C Katherine-Diedrich
 Scale - 1" = 100-Feet

COPYRIGHT 1962
 U.S. CODE, TITLE 17
 LORAIN COUNTY, OHIO
 Reproduced by,
 Allied Microfilm Corp.
 Akron, Ohio

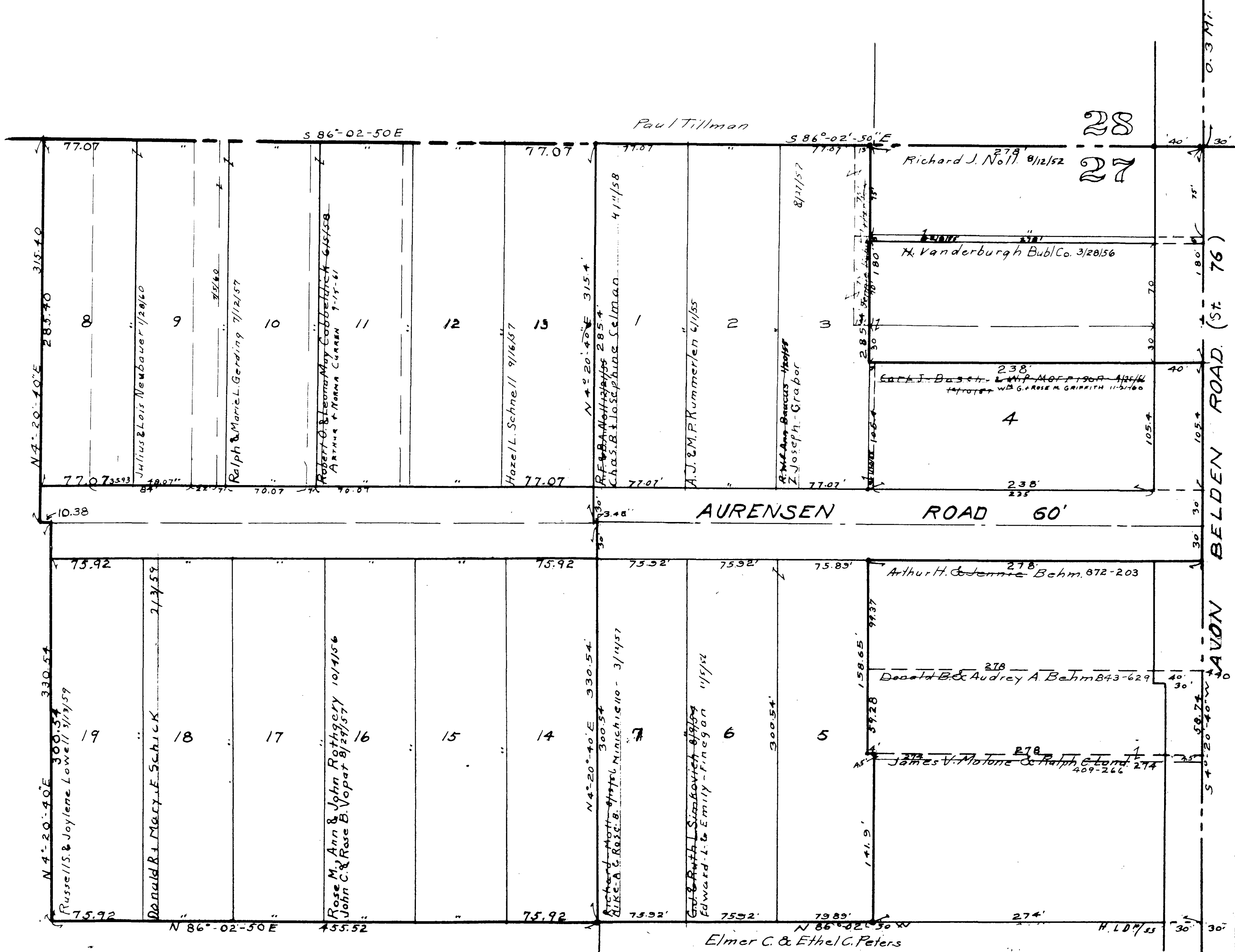
RIDGEVILLE
 TOWNSHIP

COPYRIGHT 1962
U.S. CODE, TITLE 17
LORAIN COUNTY, OHIO

Reproduced by,
Allied Microfilm Corp.
Akron, Ohio

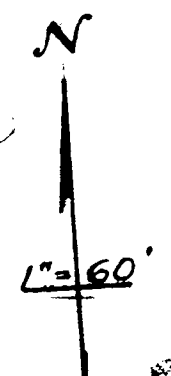
RIDGEVILLE
TOWNSHIP

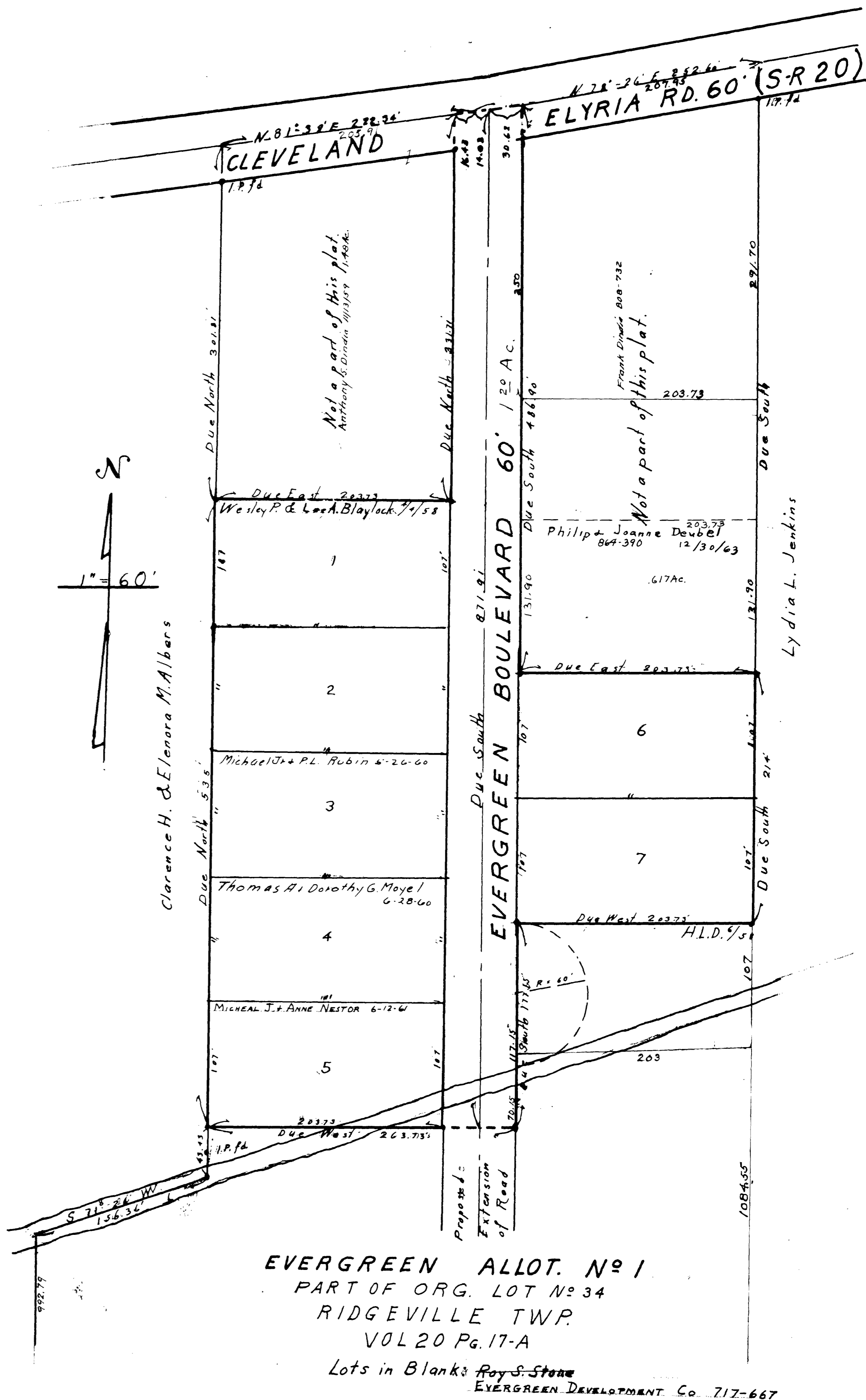
Richard J. Noell



JENNIE BEHM'S SUB. N° 2 Vol. 19 Pg. 22
Lots in Blank: Jennie Behm

JENNIE BEHM'S SUBDIVISION N° 1.
RIDGEVILLE TOWNSHIP.
PLAT BOOK Vol. 16 Pg. 27-A
O.L. # 27.
Lots in Blank: Jennie Behm.
Scale 1" = 60'





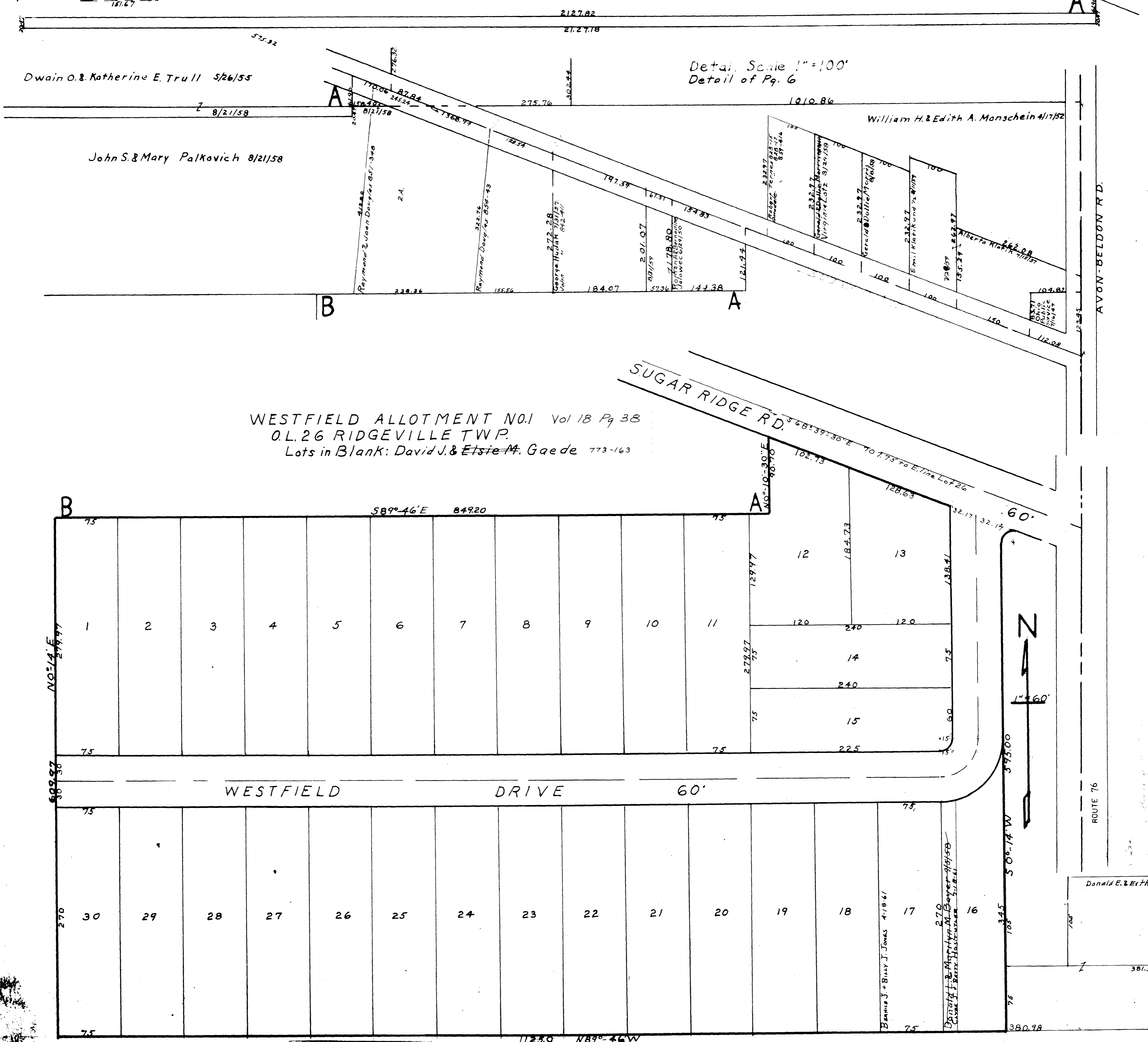
COPYRIGHT 1962
 U.S. CODE, TITLE 17
 LORAIN COUNTY, OHIO
 Reproduced by,
 Allied Microfilm Corp.
 Akron, Ohio

RIDGEVILLE
 TOWNSHIP

EVERGREEN ALLOT. NO 1
 PART OF ORG. LOT NO 34
 RIDGEVILLE TWP.
 VOL 20 Pg. 17-A

Lots in Blank: Roy S. Stone
 EVERGREEN DEVELOPMENT CO. 717-667

5-G



COPYRIGHT 1962
U.S. CODE, TITLE 17
LORAIN COUNTY, OHIO

Reproduced by,
Allied Microfilm Corp.
Akron, Ohio

RIDGEVILLE
TOWNSHIP