

DATE: June 1, 1995
Streets, Sidewalks & Bridges
INTRODUCED BY: Report #5460

1ST READING June 5, 1995

2ND READING June 19, 1995

REFERRED TO: _____

3RD READING Suspended

TEMPORARY NO.: T 64-95

ADOPTED: June 19, 1995

EMERGENCY: No Emergency

RESOLUTION NO. 796-95

A RESOLUTION ACCEPTING A NINETY FOOT EXTENSION OF AURENSEN ROAD FROM M & J COMPANY AND DEDICATING IT FOR PUBLIC PURPOSES.

WHEREAS, the Council of the City of North Ridgeville has agreed to accept from M & J Company, a ninety foot extension of Aurensen Road and to dedicate said extension for public purposes.

NOW, THEREFORE, BE IT RESOLVED BY THE COUNCIL OF THE CITY OF NORTH RIDGEVILLE, COUNTY OF LORAIN, OHIO.

SECTION 1: That the City hereby accepts the donation of a ninety foot extension of Aurensen Road from M & J Company as set forth in "Exhibit A" attached hereto and made a part herein as if fully rewritten, and hereby dedicates said extension for public purposes, including, but not limited to roadways, sidewalks, drainage and utility purposes.

SECTION 2: That said acceptance and dedication are expressly contingent upon M & J Company meeting all requirements of the Planning Commissions approval, dated October 26, 1993.

SECTION 3: That it is found and determined that all formal actions of this Council concerning and relating to the adoption of this Resolution were adopted in an open meeting of this Council and that all deliberations of this Council and any of its committees that resulted in such formal action were in meetings open to the public, in accordance with all legal requirements including Section 121.22 of the Ohio Revised Code.

SECTION 4: That this Resolution shall be in full force and effect from and after the earliest period allowed by law.

PASSED: June 19, 1995

Frederick C. Row
President of Council

ATTEST: Andrea Lewis
Clerk of Council

APPROVED: June 23, 1995

Mark
Mayor (Acting)

99-00051-7

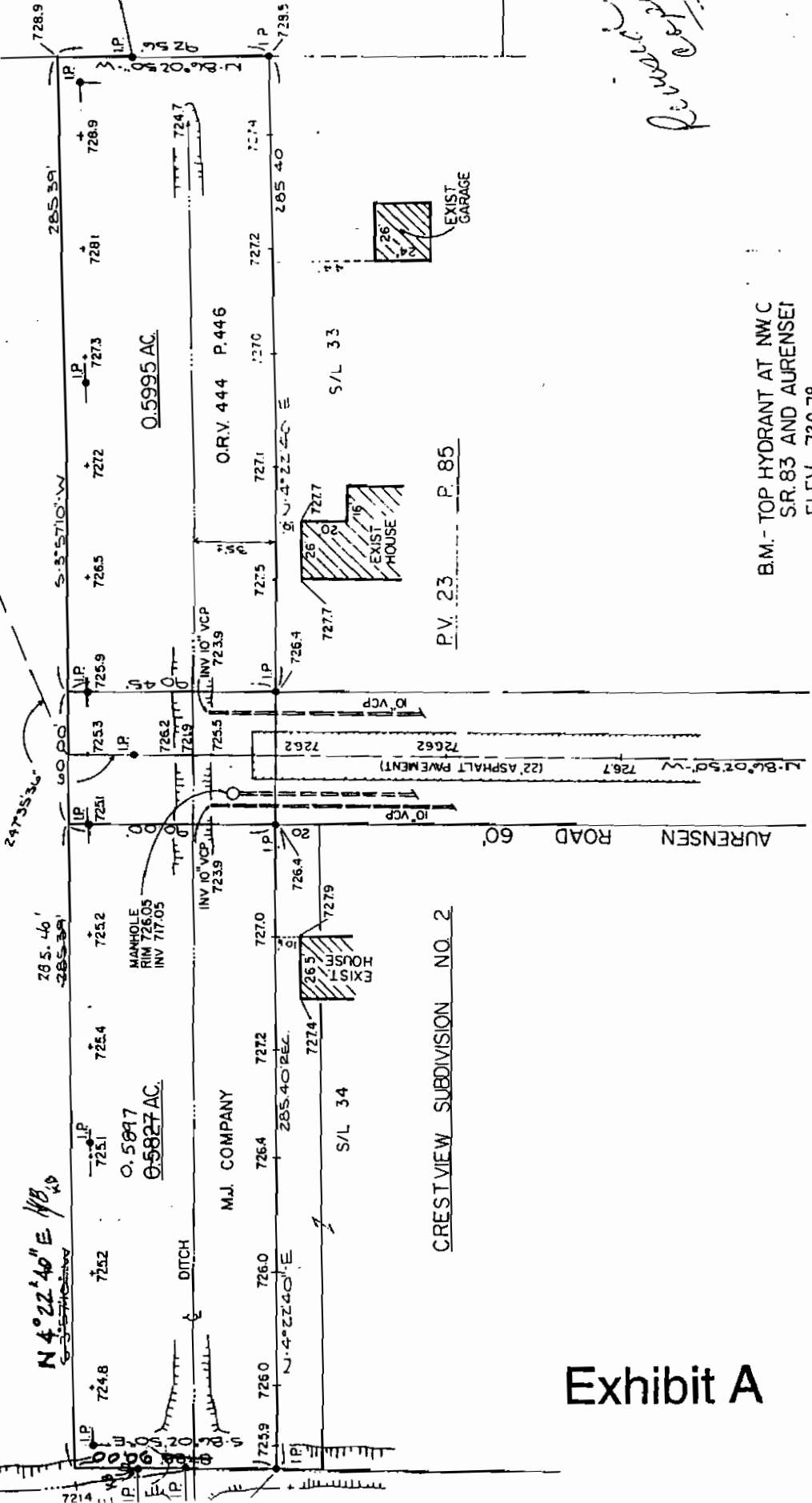
APPROVED
LORAIN CO.
MAP DEPT.
DONE 12.2.99
9.28.99 7.00.027.B
T. SPILLMAN
99-00051-7

M. J. COMPANY

D.V. 1036 P. 669

P.C.L. No. 1

ORIG. LOT 27
ORIG. LOT 28

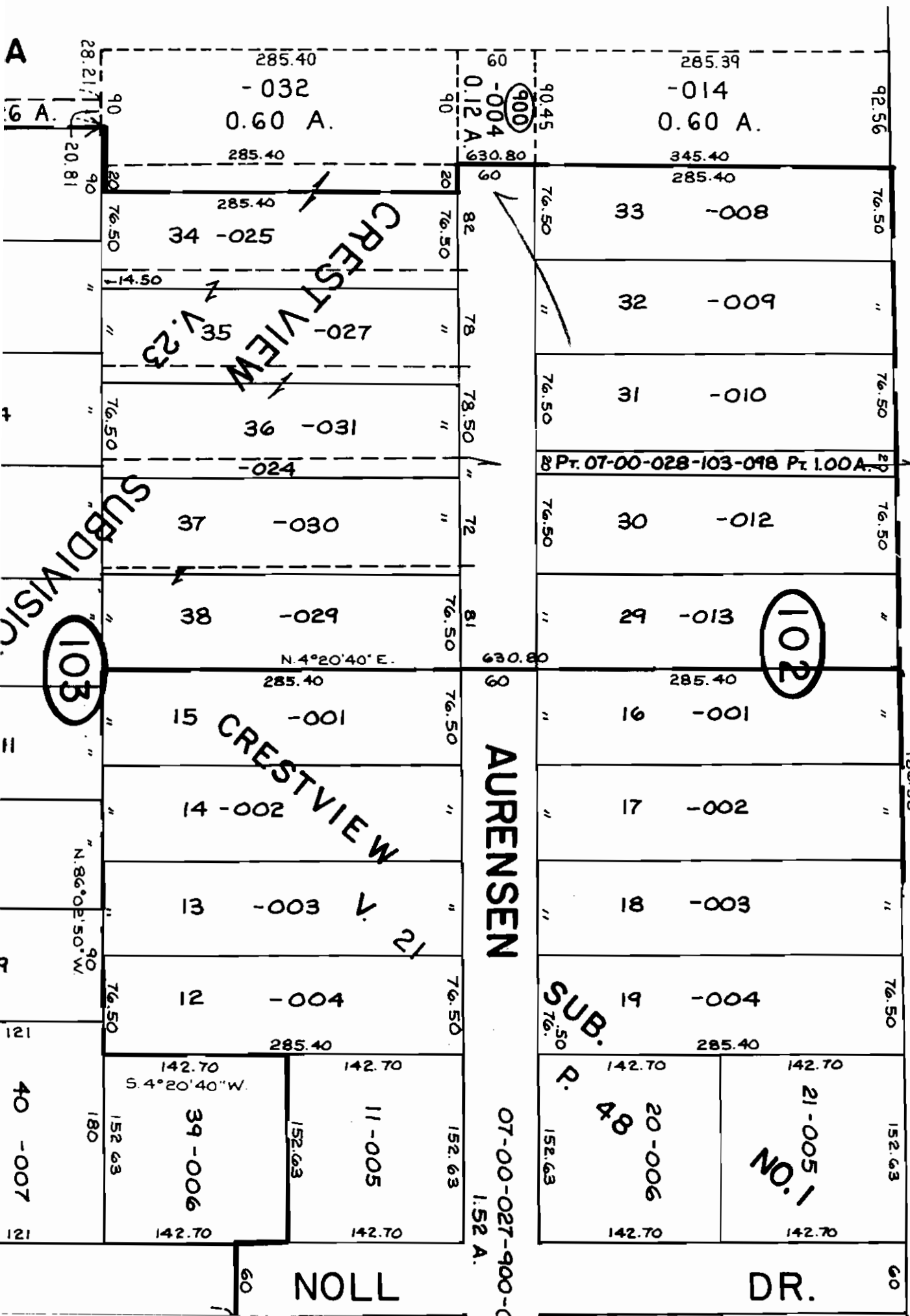


Remainder

B.M. - TOP HYDRANT AT NW C
S.R. 83 AND AURENSET
ELEV. 730.78

CRESTVIEW SUBDIVISION NO. 2

Exhibit A



7-00-021-B

SEE 7-00-0

SUBDIVISION 103

102

AURENSEN

SUB.

CRESTVIEW

CRESTVIEW

NO. 21-005

20-006

NOLL

DR.

07-00-027-900-0

48

A

6 A.

4

11

R

121

40-007

121

186.38

60

1:52 A.

152.63

152.63

76.50

76.50

76.50

76.50

76.50

76.50

76.50

76.50

76.50

76.50

76.50

76.50

76.50

76.50

76.50

76.50

76.50

92.56

90.45

90

90

82

78

78.50

72

81

60

76.50

76.50

76.50

76.50

76.50

76.50

76.50

76.50

76.50

142.70

152.63

142.70

152.63

142.70

285.40

285.40

285.40

285.40

285.40

285.40

285.40

285.40

285.40

285.40

285.40

285.40

285.40

285.40

285.40

285.40

285.40

285.40

142.70

152.63

142.70

152.63

142.70

285.39

345.40

285.40

285.40

285.40

285.40

285.40

285.40

285.40

285.40

285.40

285.40

285.40

285.40

285.40

285.40

285.40

285.40

142.70

152.63

142.70

152.63

142.70

0.60 A.

0.60 A.

0.60 A.

0.60 A.

0.60 A.

0.60 A.

0.60 A.

0.60 A.

0.60 A.

0.60 A.

0.60 A.

0.60 A.

0.60 A.

0.60 A.

0.60 A.

0.60 A.

0.60 A.

0.60 A.

0.60 A.

0.60 A.

0.60 A.

0.60 A.

0.60 A.

0.12 A.

0.12 A.

0.12 A.

0.12 A.

0.12 A.

0.12 A.

0.12 A.

0.12 A.

0.12 A.

0.12 A.

0.12 A.

0.12 A.

0.12 A.

0.12 A.

0.12 A.

0.12 A.

0.12 A.

0.12 A.

0.12 A.

0.12 A.

0.12 A.

0.12 A.

0.12 A.

0.60 A.

0.60 A.

0.60 A.

0.60 A.

0.60 A.

0.60 A.

0.60 A.

0.60 A.

0.60 A.

0.60 A.

0.60 A.

0.60 A.

0.60 A.

0.60 A.

0.60 A.

0.60 A.

0.60 A.

0.60 A.

0.60 A.

0.60 A.

0.60 A.

0.60 A.

0.60 A.

0.12 A.

0.12 A.

0.12 A.

0.12 A.

0.12 A.

0.12 A.

0.12 A.

0.12 A.

0.12 A.

0.12 A.

0.12 A.

0.12 A.

0.12 A.

0.12 A.

0.12 A.

0.12 A.

0.12 A.

0.12 A.

0.12 A.

0.12 A.

0.12 A.

0.12 A.

0.12 A.

0.60 A.

0.60 A.

0.60 A.

0.60 A.

0.60 A.

0.60 A.

0.60 A.

0.60 A.

0.60 A.

0.60 A.

0.60 A.

0.60 A.

0.60 A.

0.60 A.

0.60 A.

0.60 A.

0.60 A.

0.60 A.

0.60 A.

0.60 A.

0.60 A.

0.60 A.

0.60 A.

0.12 A.

0.12 A.

0.12 A.

0.12 A.

0.12 A.

0.12 A.

0.12 A.

0.12 A.

0.12 A.

0.12 A.

0.12 A.

0.12 A.

0.12 A.

0.12 A.

0.12 A.

0.12 A.

0.12 A.

0.12 A.

0.12 A.

0.12 A.

0.12 A.

0.12 A.

0.12 A.

0.60 A.

0.60 A.

0.60 A.

0.60 A.

0.60 A.

0.60 A.

0.60 A.

0.60 A.

0.60 A.

0.60 A.

0.60 A.

0.60 A.

0.60 A.

0.60 A.

0.60 A.

0.60 A.

0.60 A.

0.60 A.

0.60 A.

0.60 A.

0.60 A.

0.60 A.

0.60 A.

0.12 A.

0.12 A.

0.12 A.

0.12 A.

0.12 A.

0.12 A.

0.12 A.

0.12 A.

0.12 A.

0.12 A.

0.12 A.

0.12 A.

0.12 A.

0.12 A.

0.12 A.

0.12 A.

0.12 A.