

ORDINANCE NO. 4513

4518

An Ordinance amending portions of Section 2 and portions of Section 3 of Ordinance No. 845, passed on the 1st day of August, 1904 and approved on the 1st day of August, 1904, by City Council of Lorain, Ohio, establishing and re-establishing changes made in the dock line of Black River as designated in the map attached hereto and made a part of this amending Ordinance.

BE IT ORDAINED BY THE COUNCIL OF THE CITY OF LORAIN,  
STATE OF OHIO:

SECTION 1.

That portions of Section two of Ordinance No. 845, passed on the 1st day of August, 1904 and approved on the 1st day of August, 1904, shall be amended to read as follows:-

- a. The point of commencement in the dock line description shall be changed and reestablished as follows: The said dock or wharf lines on the southwesterly side of said Black River shall commence at a point  $45^{\circ}-30'$  and 196 feet from E. W.; thence to continue as in original section.
- b. The points mentioned below and described in said section shall hereinafter be designated by the following numbers which numbers are the same as appear on map of Black River No. X-9 on file in the City Engineer's Office; Point described as the intersection of  $74^{\circ}-42'$  from Theta and  $8^{\circ}-58'$  from Psi shall be designated by No. 118; the point described as the intersection of lines  $280^{\circ}-25'$  from VIII and  $334^{\circ}-45'$  from O.T.L. shall be reestablished as the intersection of lines  $285^{\circ}-27'-23''$  from VIII and  $334^{\circ}-45'$  from O.T.L. and shall be designated by No. 122.  
The dock lines between said points shall be changed and reestablished as follows: Beginning at No. 118 thence to a point  $48^{\circ}-30'-40''$  and 127.32 feet from Psi; thence to a point  $207^{\circ}-13'-10''$  and 500 feet from the point described next above; (this course is parallel with and two feet riverward from the face of the present B & O R R coal dock and begins at the northeasterly end thereof); thence to No. 122 and thence to continue as in original section.
- c. The points mentioned below and described in said section shall hereinafter be designated by the following numbers which numbers are the same as appear on Map of Black River No. X-9 on file in the City Engineer's Office;-Point described as the intersection of the lines  $104^{\circ}-13'$  from VIII and  $161^{\circ}-50'$  from XVI shall be designated by No. 136; point described as  $52^{\circ}-49'$  and 15 feet from XV shall be designated by No. 138; point described as intersection of lines  $343^{\circ}-00'-00''$  from XXVI and  $271^{\circ}-51'00''$  from PHI shall be designated by No. 140; point described as  $237^{\circ}-34'-14''$  and 1008.064 feet from PHI shall be designated by No. 142. The dock lines between said points shall be changed and reestablished as follows: Beginning at No. 136; thence to a point on the line between No. 136 and No. 138 and 70 feet distant from No. 138; thence to a point on the line between No. 140 and No. 142 and 130 feet distant from No. 140; thence to No. 142; thence to continue as in original section.

SECTION 11.

That portions of Section 3 of Ordinance No. 845, passed on the 1st day of August, 1904 and approved on the 1st day of August, 1904, shall be amended to read as follows:-

The points mentioned below and described in said section shall be hereinafter designated by the following numbers which numbers are the same as appear on Map of Black River No. X-9 on file in City Engineer's Office; Point described as the intersection of the lines 322°-56' from VIII and 104°-44' from PSI shall be designated by No. 123; -point described as the intersection of the lines 298°-49' from VIII and 354°-37' from O.T.L. shall be designated by No. 125; Point described as 275°-46' and 673 feet from VIII shall be designated by No. 127; Point described as 254°-41' and 313 feet from VIII shall be designated by No. 129; Point described as 97°-45' and 168 feet from VIII shall be designated by No. 131; Point described as the intersection of lines 237°-30' from XVI and 303°-38' from XV shall be designated by No. 133.

The dock lines between said points shall be changed and reestablished as follows: Beginning at No. 123 thence to a point on the line between No. 123 and No. 125 and 48 ft. distant from No. 125; thence to a point on the line between No. 125 and No. 127 and 82 ft. distant from No. 125; thence to another point on said line between No. 125 and No. 127 and 70 ft distant from No. 127; thence to a point on the line between No. 127 and No. 129 and 53 ft. distant from No. 127; thence to another point on said line between No. 127 and No. 129 and 125 feet distant from No. 129; thence 98°-00' from the point described next above to the intersection with a line parallel with and 10 ft distant northerly from the line between No. 129 and No. 131; thence along said line parallel with and 10 ft distant northerly from the line between No. 129 and No. 131 and this line extended easterly to its intersection with the line between No. 131 and No. 133; thence along said line between No. 131 and No. 133 to No. 133; thence to continue as in original section.

SECTION 111.

That the map attached to this Ordinance is hereby expressly made to be a part of and incorporated in this amending Ordinance.

SECTION IV.

This Ordinance is hereby declared to be an emergency Ordinance the emergency being the immediate necessity for the correcting of Black River dock lines within the City of Lorain, Ohio to permit the Federal Government to engage in their dredging program and for the preservation of the property of the Citizens of Lorain, Ohio.

SECTION V.

This Ordinance shall take effect and be in force from and after the earliest period allowed by law.

PASSED: June 21, 1937

PRESIDENT

ATTEST: Paul Mikus CLERK

APPROVED: June 21, 1937

MAYOR

MAP OF

# BLACK RIVER

SHOWING

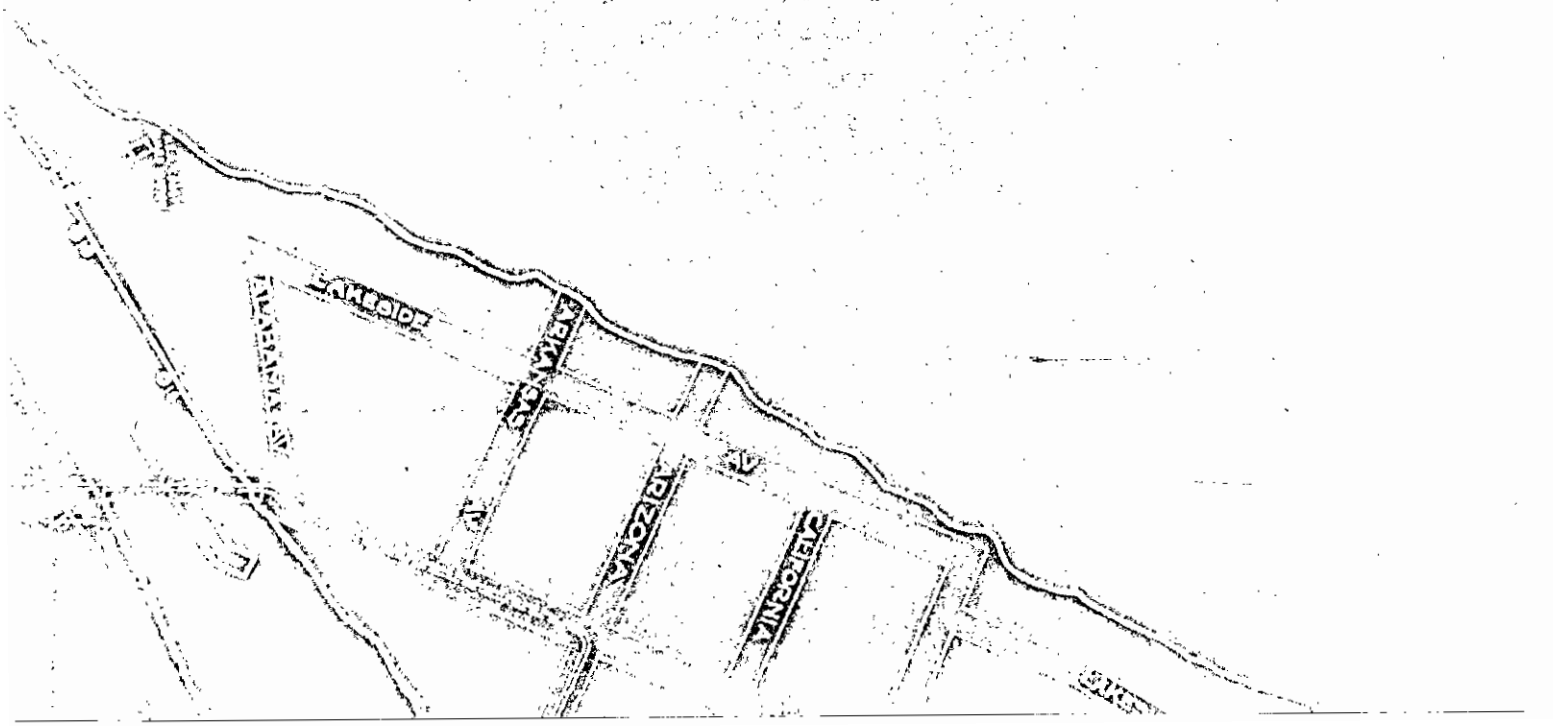
## CHANGES MADE IN DOCK LINE

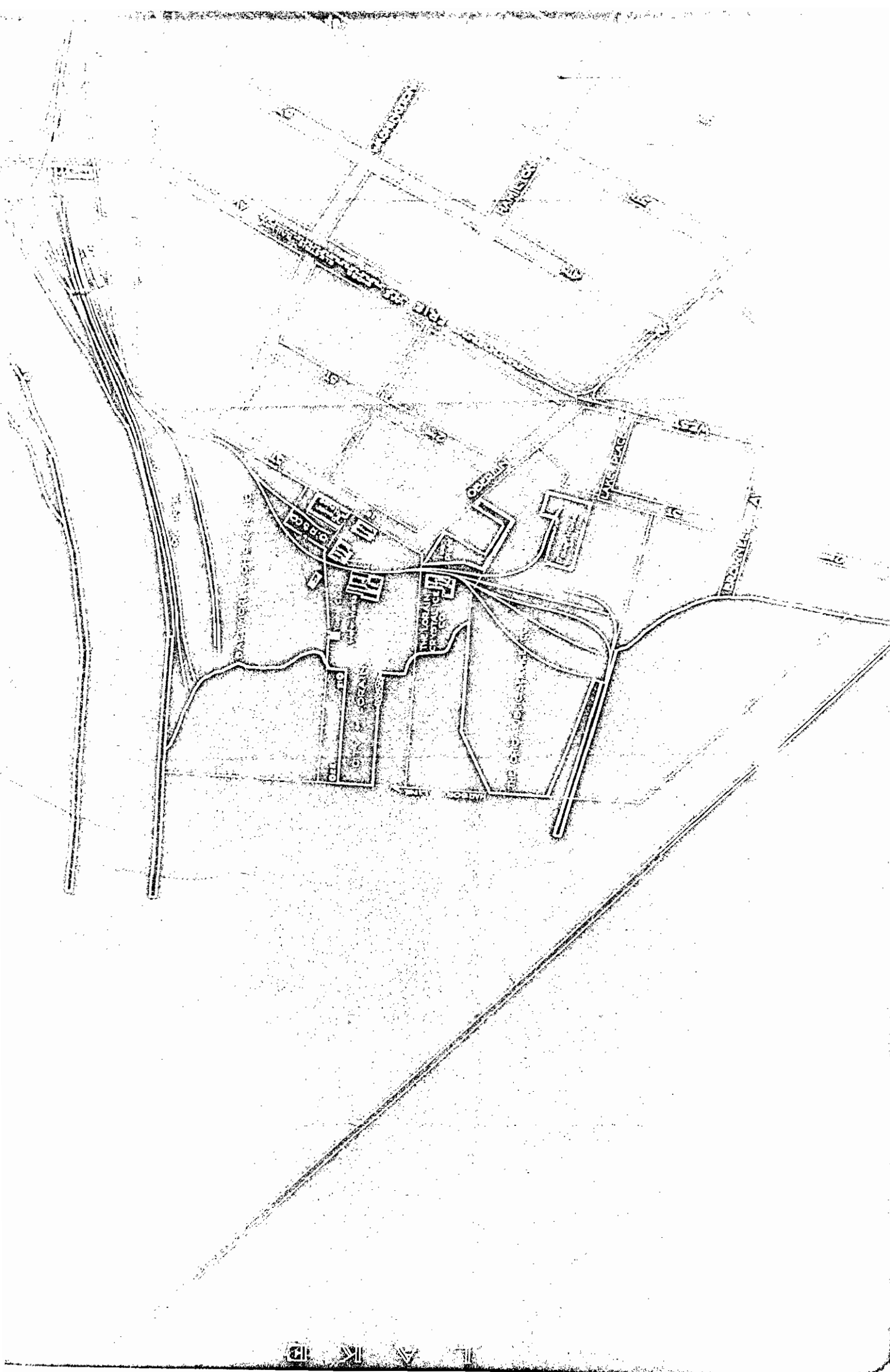
BY

### ORDINANCE NO. 4575

NOTE: For more detailed information concerning changes, see drawing No. X-28 and Field Book 57-32, page 35 and file in City Engineers office.

12 12 12 12

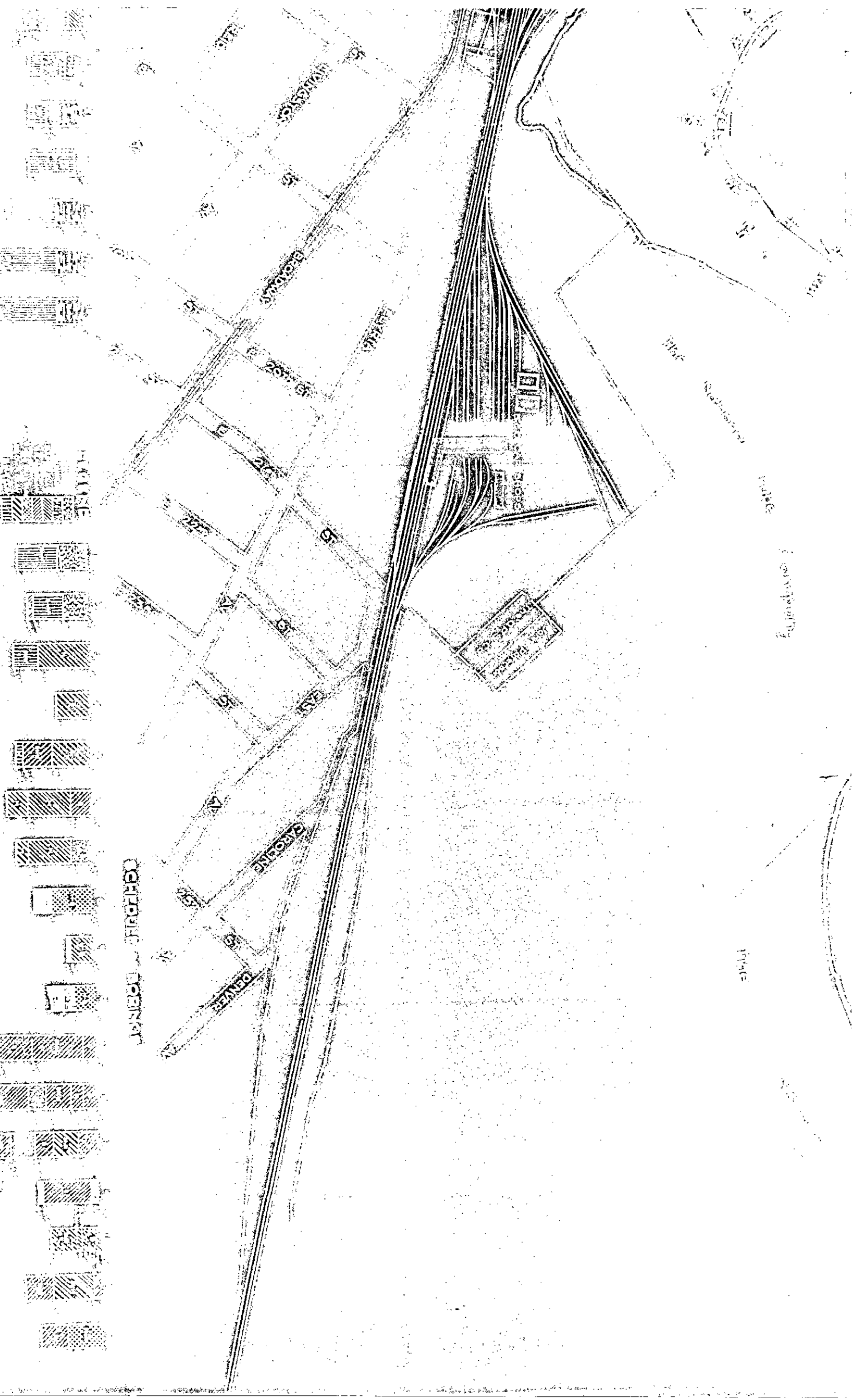




10 20 30 40 50 60 70 80 90 100

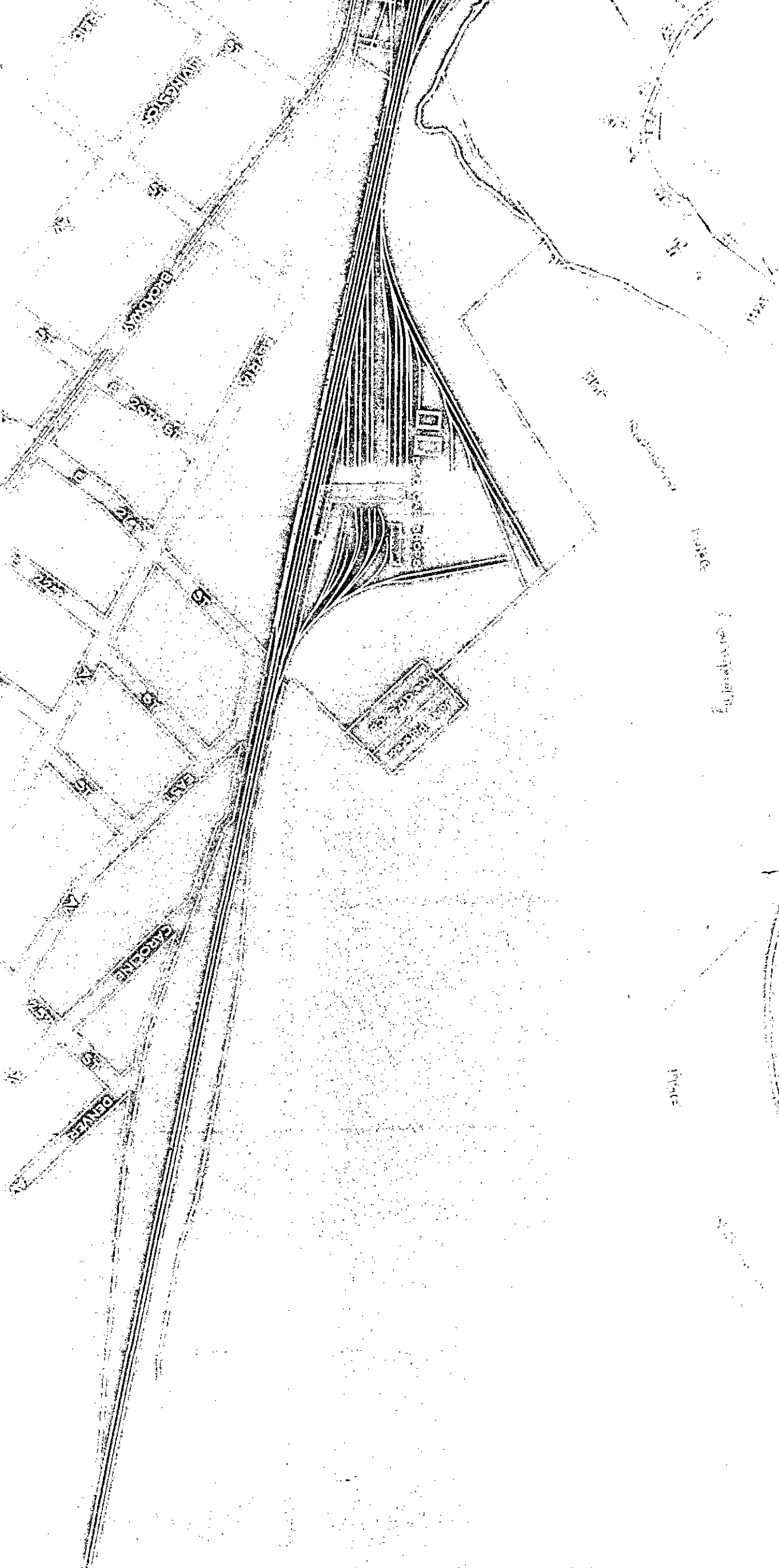






LEGEND

- [Hatched pattern: diagonal lines from top-left to bottom-right]
- [Hatched pattern: diagonal lines from top-right to bottom-left]
- [Hatched pattern: horizontal lines]
- [Hatched pattern: vertical lines]
- [Hatched pattern: cross-hatch]
- [Hatched pattern: diagonal lines from top-left to bottom-right, with a central dot]
- [Hatched pattern: diagonal lines from top-right to bottom-left, with a central dot]
- [Hatched pattern: horizontal lines, with a central dot]
- [Hatched pattern: vertical lines, with a central dot]
- [Hatched pattern: cross-hatch, with a central dot]
- [Hatched pattern: diagonal lines from top-left to bottom-right, with a central dot and a small square]
- [Hatched pattern: diagonal lines from top-right to bottom-left, with a central dot and a small square]
- [Hatched pattern: horizontal lines, with a central dot and a small square]
- [Hatched pattern: vertical lines, with a central dot and a small square]
- [Hatched pattern: cross-hatch, with a central dot and a small square]



1946

1946

1946

1946

