

ORDINANCE NO. 44-17

AN ORDINANCE ACCEPTING THE PLAT OF THE GARDENS AT MORNINGSIDE SUBDIVISION NO. 3 WITHIN THE CITY OF LORAIN.

WHEREAS, the Lorain City Planning Commission approved The Gardens at Morningside Subdvision No. 3, within the City of Lorain, Ohio at their regular meeting held on February 5, 2014; and

WHEREAS, Lorain City Council considered the recommendation of the Lorain City Planning Commission's approval of The Landings at Martin's Run Subdivision No. 3, at the regular Council meeting held on February 17, 2014; and

NOW, THEREFORE, BE IT ORDAINED BY THE COUNCIL OF THE CITY OF LORAIN:

SECTION I. That the plat of The Gardens at Morningside Subdvision No. 3 is hereby approved and accepted.

SECTION II. That it is found and determined that all formal actions of this Council concerning and relating to the adoption of this Ordinance were adopted in an open meeting of this Council, and that all deliberations of this Council and of any of its committees that resulted in such formal actions, were in meetings open to the public, in compliance with all legal requirements, including Ohio Revised Code 121.22.

Section III. That this Ordinance shall take effect and be in force from and after the earliest period allowed by law.

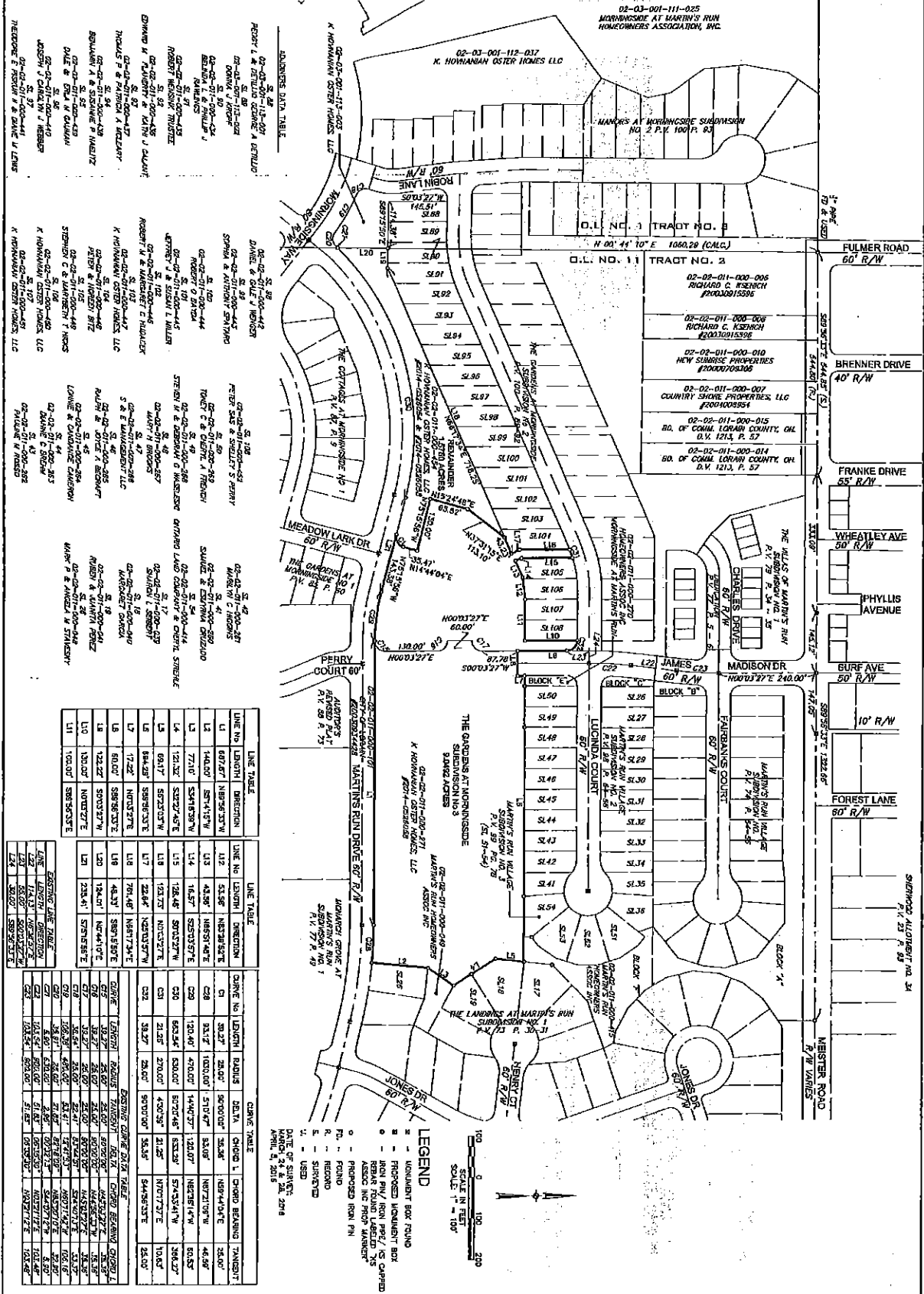
PASSED: May 15, 2017

ATTEST: Nancy Greer, Clerk

APPROVED: May 15th, 2017

[Signature]
PRESIDENT OF COUNCIL
[Signature]
MAYOR

NANCY A. GREER, CLERK OF COUNCIL OF THE CITY OF LORAIN, OHIO, CERTIFY THE FOREGOING IS A TRUE AND ACCURATE COPY OF ORD. NO. 44-17 PASSED ON THE 15 DAY OF May, 2017 BY COUNCIL AND TAKEN FROM THE RECORDS IN THE OFFICE OF THE CLERK. Nancy Greer
DATE 5-24-17 CLERK OF COUNCIL



ADJACENT DATA TABLE

OWNER	TRACT NO.	ADDRESS
02-03-001-111-025	111	MORNINGSIDE SUBDIVISION NO. 2 P.L. 100 P. 83
02-03-001-112-037	112	K. HORNMAN OSTER HOMES LLC
02-03-001-113-005	113	K. HORNMAN OSTER HOMES LLC
02-03-001-114-005	114	K. HORNMAN OSTER HOMES LLC
02-03-001-115-005	115	K. HORNMAN OSTER HOMES LLC
02-03-001-116-005	116	K. HORNMAN OSTER HOMES LLC
02-03-001-117-005	117	K. HORNMAN OSTER HOMES LLC
02-03-001-118-005	118	K. HORNMAN OSTER HOMES LLC
02-03-001-119-005	119	K. HORNMAN OSTER HOMES LLC
02-03-001-120-005	120	K. HORNMAN OSTER HOMES LLC
02-03-001-121-005	121	K. HORNMAN OSTER HOMES LLC
02-03-001-122-005	122	K. HORNMAN OSTER HOMES LLC
02-03-001-123-005	123	K. HORNMAN OSTER HOMES LLC
02-03-001-124-005	124	K. HORNMAN OSTER HOMES LLC
02-03-001-125-005	125	K. HORNMAN OSTER HOMES LLC
02-03-001-126-005	126	K. HORNMAN OSTER HOMES LLC
02-03-001-127-005	127	K. HORNMAN OSTER HOMES LLC
02-03-001-128-005	128	K. HORNMAN OSTER HOMES LLC
02-03-001-129-005	129	K. HORNMAN OSTER HOMES LLC
02-03-001-130-005	130	K. HORNMAN OSTER HOMES LLC
02-03-001-131-005	131	K. HORNMAN OSTER HOMES LLC
02-03-001-132-005	132	K. HORNMAN OSTER HOMES LLC
02-03-001-133-005	133	K. HORNMAN OSTER HOMES LLC
02-03-001-134-005	134	K. HORNMAN OSTER HOMES LLC
02-03-001-135-005	135	K. HORNMAN OSTER HOMES LLC
02-03-001-136-005	136	K. HORNMAN OSTER HOMES LLC
02-03-001-137-005	137	K. HORNMAN OSTER HOMES LLC
02-03-001-138-005	138	K. HORNMAN OSTER HOMES LLC
02-03-001-139-005	139	K. HORNMAN OSTER HOMES LLC
02-03-001-140-005	140	K. HORNMAN OSTER HOMES LLC
02-03-001-141-005	141	K. HORNMAN OSTER HOMES LLC
02-03-001-142-005	142	K. HORNMAN OSTER HOMES LLC
02-03-001-143-005	143	K. HORNMAN OSTER HOMES LLC
02-03-001-144-005	144	K. HORNMAN OSTER HOMES LLC
02-03-001-145-005	145	K. HORNMAN OSTER HOMES LLC
02-03-001-146-005	146	K. HORNMAN OSTER HOMES LLC
02-03-001-147-005	147	K. HORNMAN OSTER HOMES LLC
02-03-001-148-005	148	K. HORNMAN OSTER HOMES LLC
02-03-001-149-005	149	K. HORNMAN OSTER HOMES LLC
02-03-001-150-005	150	K. HORNMAN OSTER HOMES LLC
02-03-001-151-005	151	K. HORNMAN OSTER HOMES LLC
02-03-001-152-005	152	K. HORNMAN OSTER HOMES LLC
02-03-001-153-005	153	K. HORNMAN OSTER HOMES LLC
02-03-001-154-005	154	K. HORNMAN OSTER HOMES LLC
02-03-001-155-005	155	K. HORNMAN OSTER HOMES LLC
02-03-001-156-005	156	K. HORNMAN OSTER HOMES LLC
02-03-001-157-005	157	K. HORNMAN OSTER HOMES LLC
02-03-001-158-005	158	K. HORNMAN OSTER HOMES LLC
02-03-001-159-005	159	K. HORNMAN OSTER HOMES LLC
02-03-001-160-005	160	K. HORNMAN OSTER HOMES LLC
02-03-001-161-005	161	K. HORNMAN OSTER HOMES LLC
02-03-001-162-005	162	K. HORNMAN OSTER HOMES LLC
02-03-001-163-005	163	K. HORNMAN OSTER HOMES LLC
02-03-001-164-005	164	K. HORNMAN OSTER HOMES LLC
02-03-001-165-005	165	K. HORNMAN OSTER HOMES LLC
02-03-001-166-005	166	K. HORNMAN OSTER HOMES LLC
02-03-001-167-005	167	K. HORNMAN OSTER HOMES LLC
02-03-001-168-005	168	K. HORNMAN OSTER HOMES LLC
02-03-001-169-005	169	K. HORNMAN OSTER HOMES LLC
02-03-001-170-005	170	K. HORNMAN OSTER HOMES LLC
02-03-001-171-005	171	K. HORNMAN OSTER HOMES LLC
02-03-001-172-005	172	K. HORNMAN OSTER HOMES LLC
02-03-001-173-005	173	K. HORNMAN OSTER HOMES LLC
02-03-001-174-005	174	K. HORNMAN OSTER HOMES LLC
02-03-001-175-005	175	K. HORNMAN OSTER HOMES LLC
02-03-001-176-005	176	K. HORNMAN OSTER HOMES LLC
02-03-001-177-005	177	K. HORNMAN OSTER HOMES LLC
02-03-001-178-005	178	K. HORNMAN OSTER HOMES LLC
02-03-001-179-005	179	K. HORNMAN OSTER HOMES LLC
02-03-001-180-005	180	K. HORNMAN OSTER HOMES LLC
02-03-001-181-005	181	K. HORNMAN OSTER HOMES LLC
02-03-001-182-005	182	K. HORNMAN OSTER HOMES LLC
02-03-001-183-005	183	K. HORNMAN OSTER HOMES LLC
02-03-001-184-005	184	K. HORNMAN OSTER HOMES LLC
02-03-001-185-005	185	K. HORNMAN OSTER HOMES LLC
02-03-001-186-005	186	K. HORNMAN OSTER HOMES LLC
02-03-001-187-005	187	K. HORNMAN OSTER HOMES LLC
02-03-001-188-005	188	K. HORNMAN OSTER HOMES LLC
02-03-001-189-005	189	K. HORNMAN OSTER HOMES LLC
02-03-001-190-005	190	K. HORNMAN OSTER HOMES LLC
02-03-001-191-005	191	K. HORNMAN OSTER HOMES LLC
02-03-001-192-005	192	K. HORNMAN OSTER HOMES LLC
02-03-001-193-005	193	K. HORNMAN OSTER HOMES LLC
02-03-001-194-005	194	K. HORNMAN OSTER HOMES LLC
02-03-001-195-005	195	K. HORNMAN OSTER HOMES LLC
02-03-001-196-005	196	K. HORNMAN OSTER HOMES LLC
02-03-001-197-005	197	K. HORNMAN OSTER HOMES LLC
02-03-001-198-005	198	K. HORNMAN OSTER HOMES LLC
02-03-001-199-005	199	K. HORNMAN OSTER HOMES LLC
02-03-001-200-005	200	K. HORNMAN OSTER HOMES LLC

LINE TABLE

LINE NO.	LENGTH	DIRECTION
L1	100.00'	N00°00'00"W
L2	100.00'	N00°00'00"W
L3	100.00'	N00°00'00"W
L4	100.00'	N00°00'00"W
L5	100.00'	N00°00'00"W
L6	100.00'	N00°00'00"W
L7	100.00'	N00°00'00"W
L8	100.00'	N00°00'00"W
L9	100.00'	N00°00'00"W
L10	100.00'	N00°00'00"W
L11	100.00'	N00°00'00"W

LINE TABLE

LINE NO.	LENGTH	DIRECTION
L12	100.00'	N00°00'00"W
L13	100.00'	N00°00'00"W
L14	100.00'	N00°00'00"W
L15	100.00'	N00°00'00"W
L16	100.00'	N00°00'00"W
L17	100.00'	N00°00'00"W
L18	100.00'	N00°00'00"W
L19	100.00'	N00°00'00"W
L20	100.00'	N00°00'00"W
L21	100.00'	N00°00'00"W
L22	100.00'	N00°00'00"W
L23	100.00'	N00°00'00"W
L24	100.00'	N00°00'00"W

CHANGE TABLE

CHANGE NO.	LENGTH	RADIUS	DELTA	CHORD L	CHORD BEARING	TANGENT
C1	30.27'	20.00'	90°00'00"	35.38'	N09°10'00"E	36.00'
C2	31.12'	100.00'	57°10'47"	12.00'	N07°10'00"W	46.80'
C3	130.40'	470.00'	14°40'37"	128.00'	N02°51'00"W	80.85'
C4	62.34'	530.00'	8°20'46"	62.34'	N07°43'00"W	308.27'
C5	21.25'	25.00'	43°00'00"	31.25'	N07°17'00"E	10.84'
C6	33.27'	25.00'	90°00'00"	33.27'	S4°45'30"E	33.00'

LEGEND

- UNOCCUPIED BOX ROUND
- IMPROVED MONUMENT BOX
- REBAR FOUND MONUMENT BOX
- REBAR FOUND MONUMENT ASSESSING FROM ADJACENT ASSOC INC FROM ADJACENT
- PROPOSED IRON PIN
- FOUND
- REBAR
- SURVEYED
- USED

DATE OF SURVEY: MARCH 24 & 25, 2016

RECORD PLAT

THE GARDENS AT MORNINGSIDE SUBDIVISION No. 3

PART OF BLACK RIVER TOWNSHIP
ORIGINAL MAP NO. 11, TRACT NO. 3
CITY OF LORAIN COUNTY OF LORAIN STATE OF OHIO

KS Associates, Inc.
250 Burns Road, Suite 100
Elyria, OH 44035
P 440 365 4730
F 440 365 4790
www.kssociates.com

NO.	DATE	DESCRIPTION	BY
1			
2			
3			
4			

Remaining files located in Lorain City Eng. Office