



LORAIN COUNTY

Board of Commissioners
Ted Kalo Lori Kokoski Tom Williams



Doc ID: 017697330005 Type: OFF
Kind: RESOLUTION
Recorded: 10/07/2013 at 10:26:03 AM
Fee Amt: \$0.00 Page 1 of 5
Lorain County, Ohio
Judith M Nedwick County Recorder

File **2013-0481479**

County Administrator
James R. Cordes
440-329-5760

Clerk of Board of Commissioners
Theresa Upton
440-329-5103

Animal Control Officer
J. A. Szlempa Sr.
440-326-5997

Budget Director
Lisa Hobart
440-329-5201

Charles Berry Bridge Supervisor
Stan Koziura
440-244-2137

Children & Family Council
Melissa Stefano
440-284-4467

Community Development
Don Romanek
440-328-2323

E-9-1-1 Director
Robin Jones
440-329-5444

Emergency Management &
Homeland Security Director
Thomas Kelley
440-329-5117

Golden Acres Administrator
Jeri Dull
440-988-7210

Human Resources Department
440-329-5150

IT Director
Ernie Smith
440-329-5786

Lorain County Transit
440-329-5525

Maintenance Director
Dennis Shawver
440-329-5326

Office on Aging Director
Patricia Littleton
440-329-4818

Office of Sustainability Director
Michael Challenger
440-328-2361

Purchasing
440-329-5225

Records Center Supervisor
Lynn Wallace-Smith
440-326-4866

Solid Waste Director
Keith Bailey
440-329-5442

Special Projects Manager
Karen Davis
440-329-5102

Workforce Development
440-284-1830

June 20, 2012

Jackie Ramsey, Fiscal/Clerk
Columbia Township Trustees
PO Box 819
25496 Royalton Road
Columbia Station, Ohio 44028

Dear Ms. Ramsey:

Enclosed is a copy of Resolution No. 12-427, adopted by the Lorain County Board of Commissioners on June 20, 2012 granting the Vacation of an Undedicated right of way known as Michelle Drive, Columbia Township, Lorain County.

This is being forwarded for your information and files.

Yours truly,

Theresa L. Upton
Acting Clerk

tlu
Enclosure

Cc: Judy Nedwick, LC Recorder
Mark Stewart, LC Auditor
Kenneth P. Carney, LC Engineer
Tech Spillman, Tax Map Department
File

RECEIVED FOR RECORD
2012 JUN 20 A 11:45
JUDITH M. NEDWICK
LORAIN COUNTY
RECORDER

RESOLUTION NO. 12-427

In the matter of granting the Vacation of an)
Undedicated right of way known as Michelle)
Drive, Columbia Township, Lorain County)

June 20, 2012

WHEREAS, after due and personal notice this is the day fixed for the public hearing on the Vacation of an undedicated right of way known as Michelle Drive, Columbia Township, Lorain County, Ohio; and

WHEREAS, the request was received from Columbia Township on April 9, 2012 requesting the Commissioners to vacate Michelle Drive in accordance with O.R.C. 5553.045; and

WHEREAS, Columbia Township Trustees passed by motion to vacate Michelle Drive 2-6-2012-22; and

WHEREAS, County Engineer by letter dated May 23, 2012 reviewed said petition and stated road is a part of the Plum Creek Development as recorded in the Lorain County Recorders Plat Record Volume 22, Page 55 and description correctly follows the map and have no objection to accepting the requested vacation; and

WHEREAS, Resolution No. 12-365, adopted May 30, 2012 received and journalized the proposed vacation, scheduled the view on June 11, 2012 at 10:00 a.m. and the public hearing for June 20, 2012 at 10:00 a.m.; and

WHEREAS, in accordance with ORC 5553.045 there is no provision to notify utility companies, ODNR or advertisement; and

WHEREAS, May 31, 2012 notification was sent to 24 property owners with 58 lots, 3 being undeliverable; and

WHEREAS, Assistant County Prosecutor Jerry Innes, administered an oath to those wishing to make a comment on this vacation; and

WHEREAS, Commissioner Kokoski asked if there were any comments from the Engineer's Office.

Mr. Bill Holtzman said he attended, along with Commissioner Kalo & Kokoski the viewing, there was no objections and indicted that this is a paper street, no use to the county and Engineer's office has no objection; and

WHEREAS, Commissioner Kokoski asked if there were any comments from the Township Trustees; there was no one present; and

WHEREAS, Commissioner Kalo asked for anyone in opposition to this vacation to state their comments. No one responded; and

WHEREAS, Commissioner Kokoski asked for anyone in favor or against this vacation to state their comments. No one responded; and

WHEREAS, Commissioner Kokoski asked if there were any further comments, there were none; and

NOW, THEREFORE BE IT RESOLVED, that Commissioner Kokoski moved to grant vacation of an undedicated right of way known as Michelle Drive, Columbia Township, Lorain County, Ohio and said approval is determined to be for the benefit of the public convenience and welfare.

Commissioner Williams seconded the motion.

Said Legal Description is as follows:

Situated in Columbia Twp, Lorain County, State of Ohio, located in part of Original Lot Number 66 of the Connecticut Western Reserve Township 5, Range 16 and being part of Plum Creek Development Subdivision Plat Volume 22, Page 5 as recorded in deed Book 743, Page 53 (record references to those of the Recorders Office, Lorain County, Ohio) and being more particularly described as follows:

Commencing at the Northwest corner of Original Lot 66 and the centerline of State Route 82, thence South 5°20'36" West, 990 feet along the west line of Original Lot 66 to an iron pin set and the northwest corner of said Plum Creek Development;

Thence South 84°23'48" East, 179.76 feet along the north boundary line of sub lot number 73 as recorded in said Plum Creek Development to the west right of way of Michelle Drive;

Thence South 5°36'12" West, 37.53 feet along the west right of way of Michelle Drive to the true point of beginning;

Thence South 84°23'48" East, 60.00 feet through the right of way of said Michelle Drive to the east right of way line of Michelle Drive;

Thence South 5°36'12" West, 1337.66 feet along the east right of way of Michelle Drive to the south line of said Plum Creek Development;

Thence North 85°10'40" West, 60.00 feet along the south line of said Plum Creek Development to the south east corner of sub lot number 58 of said Plum Creek Development;

Thence North 5°36'12" East, 1338.48 feet along the west right of way of Michelle Drive to the true point of beginning, with the above description containing 1.84 acres more or less as described by the Lorain County Engineers April 2, 2012 and based upon the said recorded plat Volume 22, page 5.

And;

FURTHER BE IT RESOLVED, said Vacation of the undedicated right of way known as Michelle Drive, Columbia Township, Lorain County, Ohio shall accrue proportionately to the benefit of the adjacent property owners as provided by law.

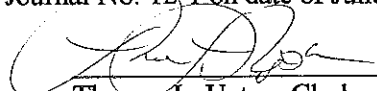
BE IT FURTHER RESOLVED, that the land is within the limits of said street as they are now established, shall forever remain, notwithstanding the passage of this resolution, subject to the rights of utilities now maintaining structures, fixtures and appurtenances in, under, over or upon said lands, to continue to maintain such structures, fixtures and appurtenances, and to enter upon said lands wherever reasonably necessary to do so for the purpose of inspecting, altering, replacing, repairing, patrolling and maintaining such structures, fixtures and appurtenances.

FURTHER BE IT RESOLVED, that a copy of this resolution be forwarded to the County Recorder, Auditor, Engineer, Tax Map and Columbia Township Trustees for recording and filing.

Ayes: All.

Motion carried. _____ (discussion was held on the above)

I, Theresa L. Upton, Clerk to the Lorain County Board of Commissioners do hereby certify that the above Resolution No. 12-427 is a true copy as it appears in Journal No. 12-1 on date of June 20, 2012.


Theresa L. Upton, Clerk

2012 APR -9 A 11: 36
TERESA L. UPTON
CLERK

Vacation Michelle Dr Columbia Township

Situated in Columbia Twp, Lorain County, State of Ohio, located in part of Original Lot Number 66 of the Connecticut Western Reserve Township 5, Range 16 and being part of Plum Creek Development Subdivision Plat Volume 22, Page 5 as recorded in deed Book 743, Page 53 (record references to those of the Records Office, Lorain County, Ohio) and being more particularly described as follows:

Commencing at the Northwest corner of Original Lot 66 and the centerline of State Route 82, thence South 5°20'36" West, 990 feet along the west line of Original Lot 66 to an iron pin set and the northwest corner of said Plum Creek Development;

Thence South 84°23'48" East, 179.76 feet along the north boundary line of sub lot number 73 as recorded in said Plum Creek Development to the west right of way of Michelle Drive;

Thence South 5°36'12" West, 37.53 feet along the west right of way of Michelle Drive to the true point of beginning;

Thence South 84°23'48" East, 60.00 feet through the right of way of said Michelle Drive to the east right of way line of Michelle Drive;

Thence South 5°36'12" West, 1337.66 feet along the east right of way of Michelle Drive to the south line of said Plum Creek Development;

Thence North 85°10'40" West, 60.00 feet along the south line of said Plum Creek Development to the south east corner of sub lot number 58 of said Plum Creek Development;

Thence North 5°36'12" East, 1338.48 feet along the west right of way of Michelle Drive to the true point of beginning, with the above description containing 1.84 acres more or less as described by the Lorain County Engineers April 2, 2012 and based upon the said recorded plat Volume 22, page 5.



PLUM CREEK DEVELOPMENT

SITING IN THE TOWNSHIP OF COLUMBIA COUNTY, OHIO, LORAIN COUNTY, OHIO, ORIGINAL LOT NUMBER 66 AND 67. THIS TRACT AS CONVEYED TO PLUM CREEK DEVELOPMENT COMPANY, LORAIN COUNTY, OHIO, IS RECORDED IN DEED BOOK 743, PG. 53, RECORDERS OFFICE, LORAIN COUNTY, OHIO.

560194
56174

Approved This 12 Day of June 1959.
Lorain County Engineer
Approved This 12 Day of June 1959.
Lorain County Surveyor
Approved This Day of 1959.
Lorain County Surveyor Engineer

Approved This 12 Day of June 1959.
Lorain County Engineer
Approved This 12 Day of June 1959.
Lorain County Surveyor
Approved This Day of 1959.
Lorain County Surveyor Engineer

Approved This 12 Day of June 1959.
Lorain County Engineer
Approved This 12 Day of June 1959.
Lorain County Surveyor
Approved This Day of 1959.
Lorain County Surveyor Engineer

Approved This 12 Day of June 1959.
Lorain County Engineer
Approved This 12 Day of June 1959.
Lorain County Surveyor
Approved This Day of 1959.
Lorain County Surveyor Engineer

Approved This 12 Day of June 1959.
Lorain County Engineer
Approved This 12 Day of June 1959.
Lorain County Surveyor
Approved This Day of 1959.
Lorain County Surveyor Engineer

Approved This 12 Day of June 1959.
Lorain County Engineer
Approved This 12 Day of June 1959.
Lorain County Surveyor
Approved This Day of 1959.
Lorain County Surveyor Engineer

Approved This 12 Day of June 1959.
Lorain County Engineer
Approved This 12 Day of June 1959.
Lorain County Surveyor
Approved This Day of 1959.
Lorain County Surveyor Engineer

Approved This 12 Day of June 1959.
Lorain County Engineer
Approved This 12 Day of June 1959.
Lorain County Surveyor
Approved This Day of 1959.
Lorain County Surveyor Engineer

Approved This 12 Day of June 1959.
Lorain County Engineer
Approved This 12 Day of June 1959.
Lorain County Surveyor
Approved This Day of 1959.
Lorain County Surveyor Engineer

Approved This 12 Day of June 1959.
Lorain County Engineer
Approved This 12 Day of June 1959.
Lorain County Surveyor
Approved This Day of 1959.
Lorain County Surveyor Engineer

Approved This 12 Day of June 1959.
Lorain County Engineer
Approved This 12 Day of June 1959.
Lorain County Surveyor
Approved This Day of 1959.
Lorain County Surveyor Engineer

Approved This 12 Day of June 1959.
Lorain County Engineer
Approved This 12 Day of June 1959.
Lorain County Surveyor
Approved This Day of 1959.
Lorain County Surveyor Engineer

Approved This 12 Day of June 1959.
Lorain County Engineer
Approved This 12 Day of June 1959.
Lorain County Surveyor
Approved This Day of 1959.
Lorain County Surveyor Engineer

Approved This 12 Day of June 1959.
Lorain County Engineer
Approved This 12 Day of June 1959.
Lorain County Surveyor
Approved This Day of 1959.
Lorain County Surveyor Engineer

APPROVED TO 64 - 27, 28, 29, 30, 31, 32, 33, 34, 35, 36, 37, 38, 39, 40, 41, 42, 43, 44, 45, 46, 47, 48, 49, 50, 51, 52, 53, 54, 55, 56, 57, 58, 59, 60, 61, 62, 63, 64, 65, 66, 67, 68, 69, 70, 71, 72, 73, 74, 75, 76, 77, 78, 79, 80, 81, 82, 83, 84, 85, 86, 87, 88, 89, 90, 91, 92, 93, 94, 95, 96, 97, 98, 99, 100.

WHEELER & MELINA
ENGINEERS & SURVEYORS
PARMA, OHIO



MAY, 1959 SCALE 1" = 100'-0"

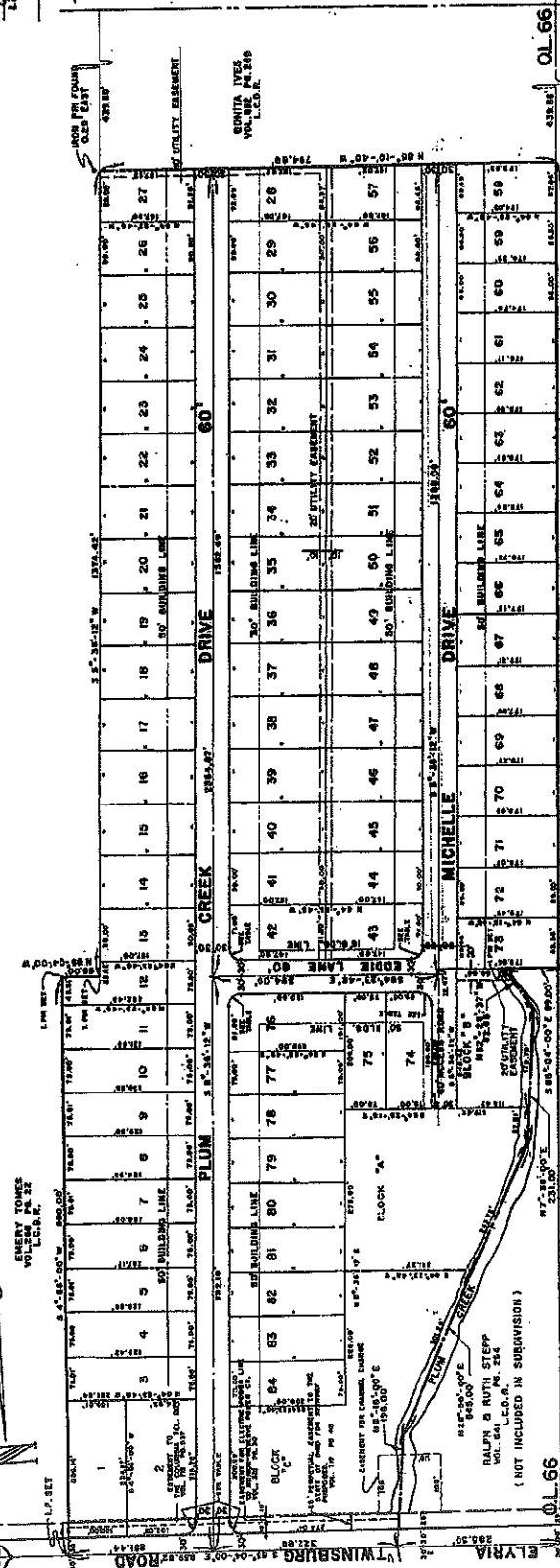
We, the Surveyors, certify that we have surveyed the premises and prepared the attached plat and that it is correct.

F. W. WHEELER
RES. CIVIL ENGINEER NO. 8235

MAY, 1959 SCALE 1" = 100'-0"

We, the Surveyors, certify that we have surveyed the premises and prepared the attached plat and that it is correct.

F. W. WHEELER
RES. CIVIL ENGINEER NO. 8235



Block	Area	Volume	Page	Recorder's Office
Block 1	1.2345	Vol. 338	Page 24	Recorder's Office
Block 2	1.2345	Vol. 338	Page 25	Recorder's Office
Block 3	1.2345	Vol. 338	Page 26	Recorder's Office
Block 4	1.2345	Vol. 338	Page 27	Recorder's Office
Block 5	1.2345	Vol. 338	Page 28	Recorder's Office
Block 6	1.2345	Vol. 338	Page 29	Recorder's Office
Block 7	1.2345	Vol. 338	Page 30	Recorder's Office
Block 8	1.2345	Vol. 338	Page 31	Recorder's Office
Block 9	1.2345	Vol. 338	Page 32	Recorder's Office
Block 10	1.2345	Vol. 338	Page 33	Recorder's Office
Block 11	1.2345	Vol. 338	Page 34	Recorder's Office
Block 12	1.2345	Vol. 338	Page 35	Recorder's Office
Block 13	1.2345	Vol. 338	Page 36	Recorder's Office
Block 14	1.2345	Vol. 338	Page 37	Recorder's Office
Block 15	1.2345	Vol. 338	Page 38	Recorder's Office
Block 16	1.2345	Vol. 338	Page 39	Recorder's Office
Block 17	1.2345	Vol. 338	Page 40	Recorder's Office
Block 18	1.2345	Vol. 338	Page 41	Recorder's Office
Block 19	1.2345	Vol. 338	Page 42	Recorder's Office
Block 20	1.2345	Vol. 338	Page 43	Recorder's Office
Block 21	1.2345	Vol. 338	Page 44	Recorder's Office
Block 22	1.2345	Vol. 338	Page 45	Recorder's Office
Block 23	1.2345	Vol. 338	Page 46	Recorder's Office
Block 24	1.2345	Vol. 338	Page 47	Recorder's Office
Block 25	1.2345	Vol. 338	Page 48	Recorder's Office
Block 26	1.2345	Vol. 338	Page 49	Recorder's Office
Block 27	1.2345	Vol. 338	Page 50	Recorder's Office
Block 28	1.2345	Vol. 338	Page 51	Recorder's Office
Block 29	1.2345	Vol. 338	Page 52	Recorder's Office
Block 30	1.2345	Vol. 338	Page 53	Recorder's Office
Block 31	1.2345	Vol. 338	Page 54	Recorder's Office
Block 32	1.2345	Vol. 338	Page 55	Recorder's Office
Block 33	1.2345	Vol. 338	Page 56	Recorder's Office
Block 34	1.2345	Vol. 338	Page 57	Recorder's Office
Block 35	1.2345	Vol. 338	Page 58	Recorder's Office
Block 36	1.2345	Vol. 338	Page 59	Recorder's Office
Block 37	1.2345	Vol. 338	Page 60	Recorder's Office
Block 38	1.2345	Vol. 338	Page 61	Recorder's Office
Block 39	1.2345	Vol. 338	Page 62	Recorder's Office
Block 40	1.2345	Vol. 338	Page 63	Recorder's Office
Block 41	1.2345	Vol. 338	Page 64	Recorder's Office
Block 42	1.2345	Vol. 338	Page 65	Recorder's Office
Block 43	1.2345	Vol. 338	Page 66	Recorder's Office
Block 44	1.2345	Vol. 338	Page 67	Recorder's Office
Block 45	1.2345	Vol. 338	Page 68	Recorder's Office
Block 46	1.2345	Vol. 338	Page 69	Recorder's Office
Block 47	1.2345	Vol. 338	Page 70	Recorder's Office
Block 48	1.2345	Vol. 338	Page 71	Recorder's Office
Block 49	1.2345	Vol. 338	Page 72	Recorder's Office
Block 50	1.2345	Vol. 338	Page 73	Recorder's Office
Block 51	1.2345	Vol. 338	Page 74	Recorder's Office
Block 52	1.2345	Vol. 338	Page 75	Recorder's Office
Block 53	1.2345	Vol. 338	Page 76	Recorder's Office
Block 54	1.2345	Vol. 338	Page 77	Recorder's Office
Block 55	1.2345	Vol. 338	Page 78	Recorder's Office
Block 56	1.2345	Vol. 338	Page 79	Recorder's Office
Block 57	1.2345	Vol. 338	Page 80	Recorder's Office
Block 58	1.2345	Vol. 338	Page 81	Recorder's Office
Block 59	1.2345	Vol. 338	Page 82	Recorder's Office
Block 60	1.2345	Vol. 338	Page 83	Recorder's Office
Block 61	1.2345	Vol. 338	Page 84	Recorder's Office
Block 62	1.2345	Vol. 338	Page 85	Recorder's Office
Block 63	1.2345	Vol. 338	Page 86	Recorder's Office
Block 64	1.2345	Vol. 338	Page 87	Recorder's Office
Block 65	1.2345	Vol. 338	Page 88	Recorder's Office
Block 66	1.2345	Vol. 338	Page 89	Recorder's Office
Block 67	1.2345	Vol. 338	Page 90	Recorder's Office
Block 68	1.2345	Vol. 338	Page 91	Recorder's Office
Block 69	1.2345	Vol. 338	Page 92	Recorder's Office
Block 70	1.2345	Vol. 338	Page 93	Recorder's Office
Block 71	1.2345	Vol. 338	Page 94	Recorder's Office
Block 72	1.2345	Vol. 338	Page 95	Recorder's Office
Block 73	1.2345	Vol. 338	Page 96	Recorder's Office
Block 74	1.2345	Vol. 338	Page 97	Recorder's Office
Block 75	1.2345	Vol. 338	Page 98	Recorder's Office
Block 76	1.2345	Vol. 338	Page 99	Recorder's Office
Block 77	1.2345	Vol. 338	Page 100	Recorder's Office

OL-66
OL-67
OL-75
OL-74

ROSE & LOUISE HENDRICH
VOL. 378
L.C.R.

CARL & GRACE
VOL. 338
L.C.R.

JOSEPH BRASSAN
VOL. 338
L.C.R.

MARIL NESS
VOL. 338
L.C.R.

FRED PROBST
VOL. 338
L.C.R.

Curve Turnout Data
Block 1
Block 2
Block 3
Block 4
Block 5
Block 6
Block 7
Block 8
Block 9
Block 10
Block 11
Block 12
Block 13
Block 14
Block 15
Block 16
Block 17
Block 18
Block 19
Block 20
Block 21
Block 22
Block 23
Block 24
Block 25
Block 26
Block 27
Block 28
Block 29
Block 30
Block 31
Block 32
Block 33
Block 34
Block 35
Block 36
Block 37
Block 38
Block 39
Block 40
Block 41
Block 42
Block 43
Block 44
Block 45
Block 46
Block 47
Block 48
Block 49
Block 50
Block 51
Block 52
Block 53
Block 54
Block 55
Block 56
Block 57
Block 58
Block 59
Block 60
Block 61
Block 62
Block 63
Block 64
Block 65
Block 66
Block 67
Block 68
Block 69
Block 70
Block 71
Block 72
Block 73
Block 74
Block 75
Block 76
Block 77
Block 78
Block 79
Block 80
Block 81
Block 82
Block 83
Block 84
Block 85
Block 86
Block 87
Block 88
Block 89
Block 90
Block 91
Block 92
Block 93
Block 94
Block 95
Block 96
Block 97
Block 98
Block 99
Block 100

Station Road

