

LORAIN COUNTY

Board of Commissioners

Betty Blair Lori Kokoski Ted Kalo



Doc ID: 017697410005 Type: OFF
Kind: RESOLUTION
Recorded: 10/07/2013 at 10:42:54 AM
Fee Amt: \$0.00 Page 1 of 5
Lorain County, Ohio
Judith M Nedwick County Recorder

File **2013-0481487**

2008 DEC-15 A 10:19

County Administrator
James R. Cordes
440-329-5760

Assistant County
Administrator
Ronald F. Twining
440-329-5530

Clerk of Board
Theresa Upton
440-329-5103

Animal Control Officer
J. A. Szlempa Sr.
440-326-5997

Budget Director
Lisa Hobart
440-329-5201

Charles Berry Bridge Supervisor
Charles Mackin
440-244-2137

Children & Family Council
Melissa Stefano
440-284-4467

Community Development
440-328-2323

E-9-1-1 Director
Robin Jones
440-329-5444

Emergency Management
& Homeland Security Director
Thomas Kelley
440-329-5117

Golden Acres Administrator
Jeri Dull
440-988-7210

Human Resources Department
440-329-5150

IT Director
Emie Smith
440-329-5786

Lorain County Transit
Robin Bulan
440-328-2490

Maintenance Director
Dennis Shawver
440-329-5326

Office on Aging Director
Patricia Littleton
440-329-4818

Office Services Supervisor
Jennifer Demich
440-329-5115

Purchasing Director
Yvonne Newton
440-329-5240

Records Center Supervisor
Lynn Wallace-Smith
440-326-4866

Solid Waste Director
Daniel Billman
440-329-5442

Special Projects Manager
Karen Davis
440-329-5102

Workforce Development Director
Vivian Alexander
440-284-1830

December 12, 2008

Belinda Anderson, Clerk
City of Oberlin
85 South Main Street
Oberlin, Ohio 44074

Dear Ms. Anderson:

Enclosed is Resolution No. 08-869, adopted by the Lorain County Board of Commissioners on December 11, 2008 accepting petition request as filed by Eric R. Severs, Law Director, City of Oberlin and adopt resolution confirming boundaries of Oberlin Township with the present corporation limits of the City of Oberlin, Ohio due to the annexation of 2.7531 acres in Pittsfield Township, Ohio.

This is being forwarded for your information and files.

Yours truly,

Theresa L. Upton
Clerk

tlu
Enclosure

Cc: James McConnell, Fiscal Officer, Pittsfield Township
Ken Carney, Lorain County Engineer
Judy Nedwick, Lorain County Recorder
Ted Spillman, Lorain County Tax Map
Mark Stewart, Lorain County Auditor
Alex Heyd, Lorain County Board of Elections
Robin Jones, 9-1-1 Department.
File

a.1

RESOLUTION NO. 08-869

In the matter of accepting petition request as filed by)
Mr. Eric Severs, Oberlin City Solicitor and adopt) December 11, 2008
resolution confirming boundaries of Oberlin Township)
with the present corporation limits of the City of)
Oberlin, Ohio for 2.7531 acres from Pittsfield Township)

WHEREAS, on date of May 22, 2008 the Lorain County Board of Commissioners granted an Expedited 1 Annexation for approximately 2.7531 acres in Pittsfield Township; and

WHEREAS, the City of Oberlin approved said Annexation of Pittsfield Township, Resolution No. 08-63 AC CMS, effective date of September 25, 2008; and

WHEREAS, as a result of the Annexation proceedings, Mr. Eric Severs, Oberlin City Law Director, has on November 25, 2008, filed a Petition request for adoption of a Resolution to conform boundaries of Oberlin Township with the present corporation limits of the City of Oberlin, Ohio, which reads as follows:

"Now comes the City of Oberlin, Lorain County, Ohio, by and through Eric R. Severs, its duly appointed and acting Law Director, and, pursuant to Section 503.07 of the Ohio Revised Code, hereby petitions the Board of Commissioners of Lorain County, Ohio, to enter an Order conforming the boundaries of Oberlin Township so as to include recently annexed property and make the boundary of said Township identical with the corporate limits of the municipality.

Attached hereto and incorporated herein by reference is a certified copy of Oberlin City Council Resolution R08-12 CMS, passed on November 17, 2008, petitioning the Board of Commissioners of Lorain County, Ohio, to extend said Oberlin Township boundary so as to include said recently annexed property, and further designating the City Law Director as the agent of the City of Oberlin in this matter.

Filed herewith is a certified copy of Ordinance No. 08-63 AC CMS, which accepted the annexation of certain property located in Pittsfield Township to the City of Oberlin, and an accurate plat and boundary description of the area included with the present corporate limits of the City of Oberlin, including the property being conformed herein.

CITY OF OBERLIN, OHIO

by: Eric R. Severs #0005864

Oberlin Law Director, 5 South Main Street, Oberlin, Ohio 44074

Telephone: (440) 774-1278 / Facsimile: (440) 774-7088

e-mail: ersevers@obelrin.net

and;

WHEREAS, said Petition along with Map was forwarded to the County Engineer and County Prosecutor for their review and findings.

NOW, THEREFORE BE IT RESOLVED, by the Lorain County Board of Commissioners that after review and recommendation of the Lorain County Engineer and Lorain County Prosecutor we do and hereby grant the request of Eric Severs, Oberlin City Law Director and conform boundaries pursuant to Section 503.07 of the Ohio Revised Code; with Petition and Resolution of the City of Oberlin, Ohio reads as follows:

"A RESOLUTION PETITIONING THE BOARD OF COMMISSIONERS OF LORAIN COUNTY, OHIO, TO EXTEND THE CURRENT BOUNDARY OF OBERLIN TOWNSHIP TO INCLUDE REAL PROPERTY RECENTLY ANNEXED TO THE CITY OF OBERLIN SO THAT THE BOUNDARY OF SAID TOWNSHIP CONFORMS TO AND IS IDENTICAL WITH THE CORPORATE LIMITS OF THE MUNICIPALITY AND DECLARING AN EMERGENCY

WHEREAS, annexation proceedings have recently been completed which annexed certain territory in Pittsfield Township to the City of Oberlin; and

WHEREAS, Section 503.07 of the Ohio Revised Code authorizes a municipality to petition the Board of County Commissioners for a change in township lines in order to make them identical, in whole or in part, with the corporate limits of the municipal corporation; and,

WHEREAS, changing such boundary lines so as to delete said recently annexed property from Pittsfield Township and adding it to Oberlin Township, the boundaries of which are identical to those the City of Oberlin, will simplify and clarify fire protection responsibilities, voting rights and tax levy jurisdictions.

NOW, THEREFORE BE IT RESOLVED, by the Council of the City of Oberlin, County of Lorain, State of Ohio, 5/7ths of all members elected thereto concurring;

SECTION 1. That Oberlin City Council, pursuant to Section 503.07 of the Ohio Revised Code, hereby respectfully petitions the Board of Commissioners of Lorain County, Ohio, for a change in township lines of Pittsfield Township so as to delete from said township certain real property recently annexed to the City of Oberlin and add said property to Oberlin Township, and make the boundary lines of said Oberlin Township conform with and identical to those of the City of Oberlin.

SECTION 2. That the Law Director is hereby designated as agent of the City of Oberlin to present said Petition to the Board of Commissioners of Lorain County and to do all things necessary and proper on behalf of the City of Oberlin to accomplish the purpose of this Resolution and to be changed as extraordinary services.

SECTION 3. It is hereby found and determined that all formal actions of this Council concerning or relating to the adoption of this Resolution were adopted in an open meeting of this Council, and that all deliberations of this Council and of any of its committees that resulted in such formal action, were in meetings open to the public in compliance with all legal requirements, including Section 121.22 of the Ohio Revised Code.

SECTION 4. That this Resolution is hereby declared to be an emergency measure necessary for the preservation of the public peace, health, and safety of the citizens of the City of Oberlin, Ohio or to provide for the usual daily operation of a municipal department, to wit:

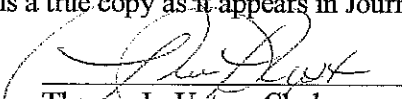
"to avoid voter confusion and taxation issues that would result if conformity of boundary proceeds were not completed in a timely fashion,"

And shall take effect immediately upon passage."

FURTHER BE IT RESOLVED, that copies of this Resolution be forwarded to the City of Oberlin, Pittsfield Township, Lorain County Engineer, Lorain County Recorder, Lorain County Tax Map, Lorain County Auditor, Lorain County Board of Elections and 9-1-1 Department.


Motion by Blair, seconded by Kokoski to adopt Resolution. Ayes: All.
Motion carried. _____ (Discussion was held on the above)

I, Theresa L. Upton, Clerk to the Lorain County Board of Commissioners do hereby certify that the above Resolution No. 08-869 is a true copy as it appears in Journal No. 08 on date of December 11, 2008.



Theresa L. Upton, Clerk

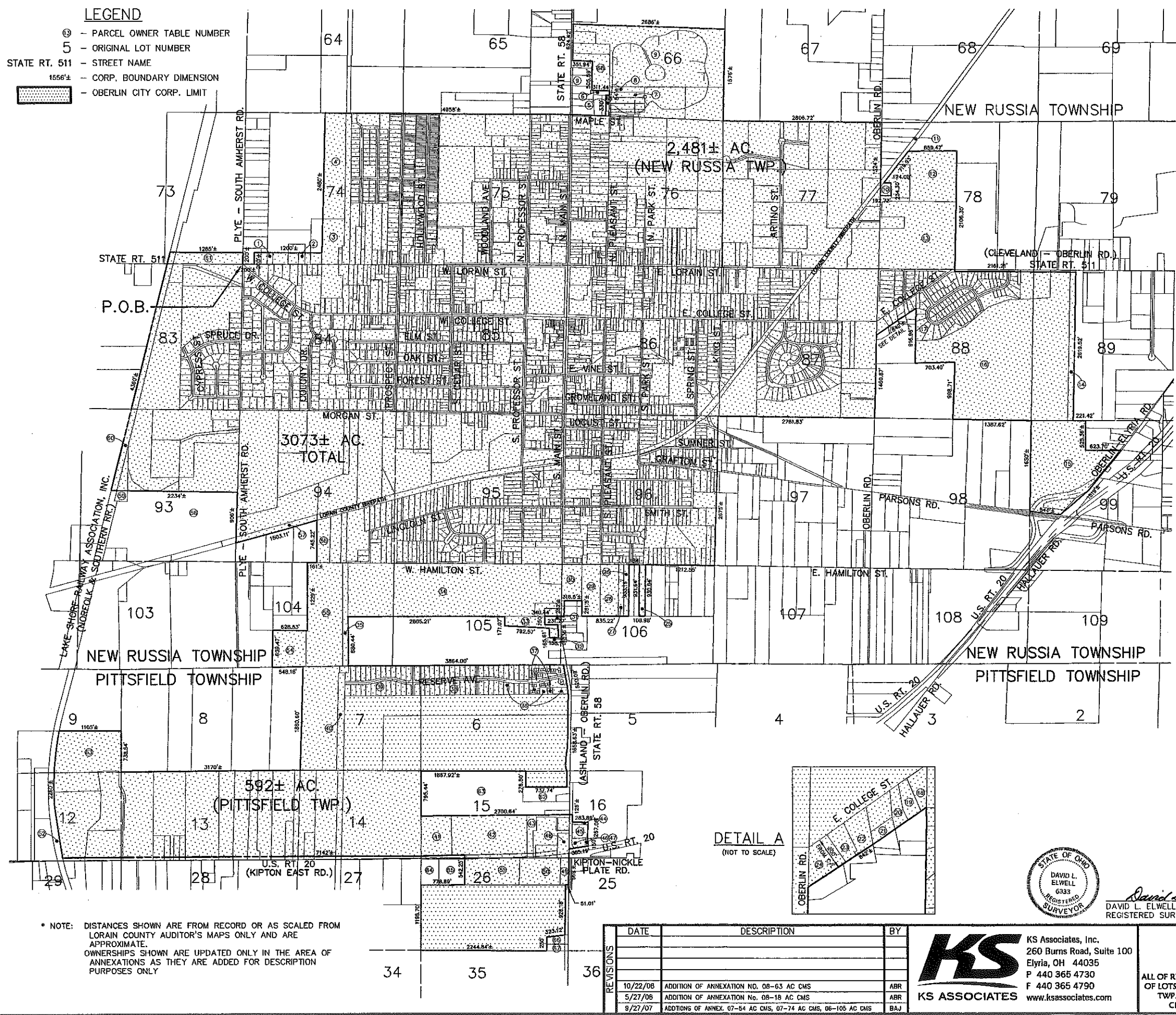
LEGEND

- ③ - PARCEL OWNER TABLE NUMBER
- 5 - ORIGINAL LOT NUMBER
- STATE RT. 511 - STREET NAME
- 1556'± - CORP. BOUNDARY DIMENSION
-  - OBERLIN CITY CORP. LIMIT

RECEIVED
LORAIN COUNTY
COMMISSIONERS

NOV 25 A 11:29

SCALE IN FEET
SCALE: 1" = 800'



PARCEL OWNER ID. TABLE

1	CARL E. & IRENE R. BOSS	0.460 AC.
2	WENDELL M. & BETTY M. HOGAN	0.460 AC.
3	DIOCESE OF CLEVELAND	6.280 AC.
4	ROBERT D. GARY & WEDGEWOOD ESTATES	15.510 AC.
5	KENDAL AT OBERLIN, INC.	1.210 AC.
6	DAISY D. JACKSON	0.510 AC.
7	KENDAL AT OBERLIN, INC.	1.310 AC.
8	KENDAL AT OBERLIN, INC.	1.320 AC.
9	KENDAL AT OBERLIN, INC.	49.980 AC.
10	JAMES & IVIE KENNEDY	0.960 AC.
11	CITY OF OBERLIN	4.790 AC.
11	LORAIN COUNTY METROPARKS	
12	CITY OF OBERLIN	17.800 AC.
13	CITY OF OBERLIN	32.780 AC.
14	COLLEGE PROPERTIES OF OBERLIN, INC.	6.000 AC.
15	OBERLIN COLLEGE	35.830 AC.
16	PETER M. SCHWNN	64.210 AC.
17	WILLOWBROOK FARMS SUBD. NO. 2 P.V. 22 P. 53	16.5553 AC.
18	LEEWARD HOLDINGS, LLC	0.420 AC.
19	LEEWARD HOLDINGS, LLC	0.410 AC.
20	WILLIAM SCOTT SMITH & LINDA SMITH	0.260 AC.
21	JOHN C. & LAURA M. HIERONYMUS	0.250 AC.
22	HAROLD STOUT & BEVERLY DOLYK	0.390 AC.
23	LEEWARD HOLDINGS, LLC	0.480 AC.
24	MARTIN LADD	1.080 AC.
25	ELAINE R. SMITH	2.350 AC.
26	WILLIAM J. & COLLEEN E. PRESTON	1.970 AC.
27	AL M. & ENOLIA TISDALE	1.330 AC.
28	ANNIE RUTH BECKMAN	6.780 AC.
29	DTW, LLC	7.110 AC.
30	WGI PROPERTIES, LLC	4.760 AC.
31	GAETANO & GIUSEPPINA CAMPEA	1.000 AC.
32	DAVID R. & MARY E. HENDERSON	0.410 AC.
33	5B STORAGE, LLC	3.500 AC.
34	CITY OF OBERLIN	60.080 AC.
35	CITY OF OBERLIN	4.690 AC.
36	OBERLIN RESERVE SUBD. NO. 1 P.V. 59 P. 29-31	21.0063 AC.
37	OBERLIN RESERVE CONDO. AMEND. #3 P.V. 79 P. 2-14	1.671 AC.
38	OBERLIN RESERVE SUBD. NO. 2 P.V. 74 P. 37-39	13.6335 AC.
39	OBERLIN RESERVE SUBD. NO. 3 P.V. 74 P. 40-42	12.9501 AC.
40	CITY OF OBERLIN D.V. 1093 P. 888	4.950 AC.
41	OBERLIN LAND COMPANY	8.630 AC.
42	WALMART REAL ESTATE BUSINESS TRUST	23.010 AC.
43	OBERLIN LAND COMPANY	3.040 AC.
44	DOREN & JOANN PORTMAN	0.260 AC.
45	DOREN & JOANN PORTMAN	1.510 AC.
46	CERTIFIED OIL CORP	0.930 AC.
47	CERTIFIED OIL CORP	0.1000 AC.
48	ROR LLC, ET AL.	2.150 AC.
49	TRIAD REALTY, LLC	1.700 AC.
50	TRIAD REALTY, LLC	8.300 AC.
51	LAND CONCEPTS COMPANY, INC.	11.000 AC.
52	LAKE SHORE RAILWAY ASSOCIATION, INC.	5.360 AC.
53	MARGARET A. KSIAZK	22.780 AC.
54	WEST PARK LIMITED, INC.	9.530 AC.
55	WEST PARK LIMITED, INC.	25.080 AC.
56	JAYNEE CLARK	4.180 AC.
57	CITY OF OBERLIN	3.48 AC.
58	THE OBERLIN GOLF CLUB CO.	55.110 AC.
59	THE OBERLIN GOLF CLUB CO.	0.900 AC.
60	LAKE SHORE RAILWAY ASSOCIATION, INC.	79.300 AC.
61	BERNADINE M. KETCH	5.540 AC.
62	DAVID P. RANSOME	4.28 AC.
63	CAROL VARNER	35.2 AC.
64	GERHART ASSOCIATION	3.62 AC.
65	W. CLAUD TURNBULL ETAL.	5.21 AC.
66	CALVIN T. HARPE	1.08 AC.
67	BEATRICE E. JENSEN	1.3 AC.
68	KENDAL AT OBERLIN	8.34 AC.

DETAIL A
(NOT TO SCALE)



David L. Elwell 10-27-08
DAVID L. ELWELL, P.S.
REGISTERED SURVEYOR NO. 6333

* NOTE: DISTANCES SHOWN ARE FROM RECORD OR AS SCALED FROM LORAIN COUNTY AUDITOR'S MAPS ONLY AND ARE APPROXIMATE. OWNERSHIPS SHOWN ARE UPDATED ONLY IN THE AREA OF ANNEXATIONS AS THEY ARE ADDED FOR DESCRIPTION PURPOSES ONLY

DATE	DESCRIPTION	BY
10/22/08	ADDITION OF ANNEXATION NO. 08-63 AC CMS	ABR
5/27/08	ADDITION OF ANNEXATION NO. 08-18 AC CMS	ABR
9/27/07	ADDITIONS OF ANNEX. 07-54 AC CMS, 07-74 AC CMS, 06-105 AC CMS	BAJ

KS
KS ASSOCIATES
260 Burns Road, Suite 100
Elyria, OH 44035
P 440 365 4730
F 440 365 4790
www.ksassociates.com

CORPORATION MAP OF THE CITY OF OBERLIN

ALL OF RUSSIA TWP. ORIGINAL LOTS 75, 76, 77, 84, 85, 86, 87, 95, 96, PART OF LOTS 66, 74, 78, 83, 88, 89, 93, 94, 99, 104, 105, 106, ALL OF PITTSFIELD TWP. ORIGINAL LOTS 13, 14 & PART OF LOTS 6, 7, 9, 12, 15, 16, & 26
CITY OF OBERLIN COUNTY OF LORAIN STATE OF OHIO

SHEET 1 OF 1
JOB NO. 06155-08A

R:\VIDEO\06155-08A\06155-08A-CORPORATION.DWG 10/24/2008 8:03:44 AM EDT

10/10/10

10/10/10