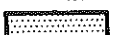
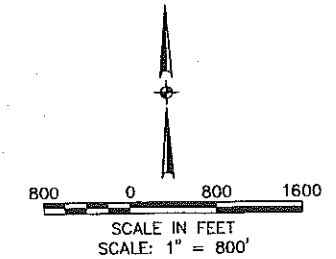


LEGEND

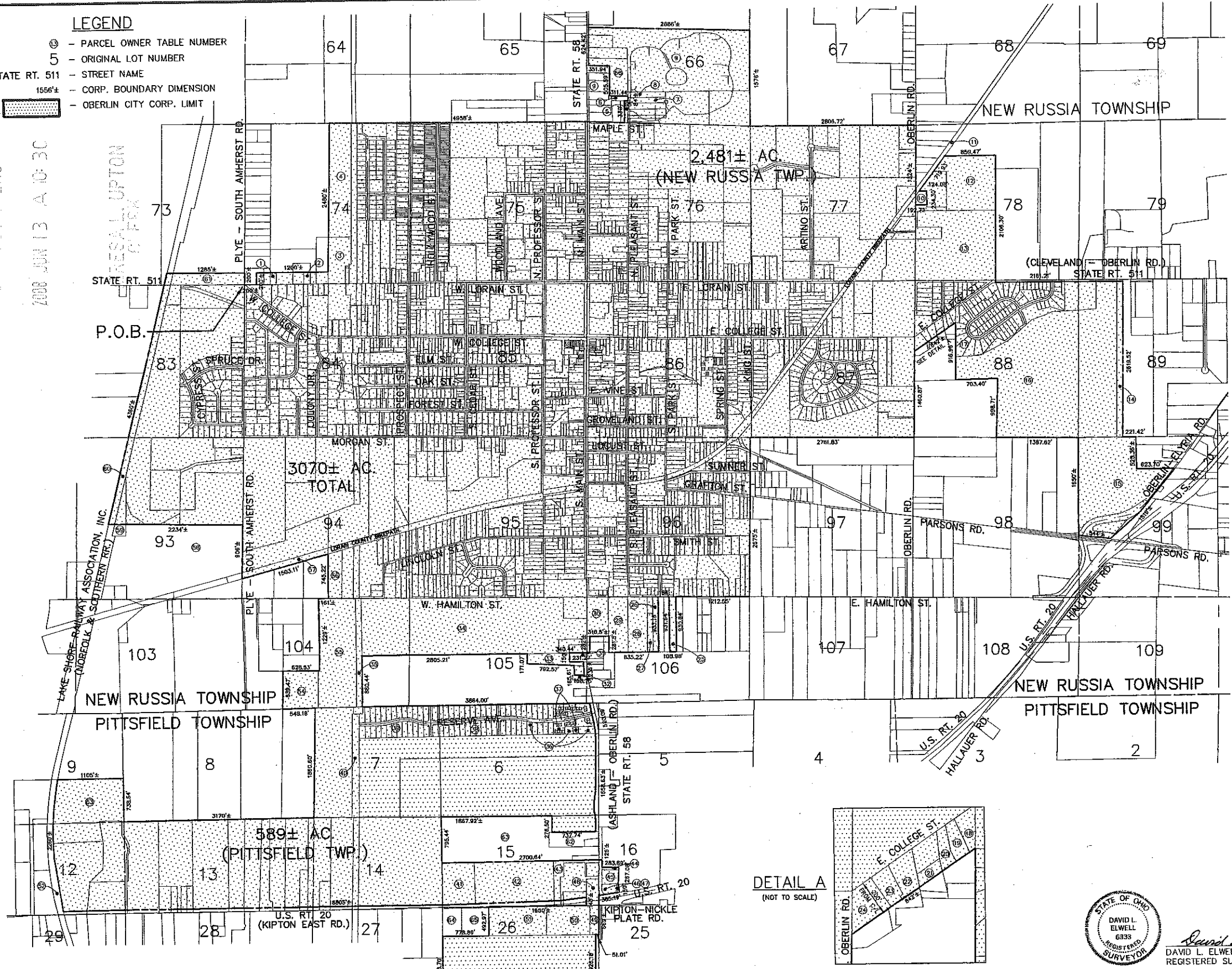
- Ⓢ - PARCEL OWNER TABLE NUMBER
- 5 - ORIGINAL LOT NUMBER
- STATE RT. 511 - STREET NAME
- 1556± - CORP. BOUNDARY DIMENSION
-  - OBERLIN CITY CORP. LIMIT



PARCEL OWNER ID. TABLE

1	CARL E. & IRENE R. BOSS	0.460 AC.
2	WENDELL M. & BETTYE M. LOGAN	0.460 AC.
3	DIOCESE OF CLEVELAND	6.280 AC.
4	ROBERT D. GARY & WEDGEWOOD ESTATES	15.510 AC.
5	KENDAL AT OBERLIN, INC.	1.210 AC.
6	DAISY D. JACKSON	0.510 AC.
7	KENDAL AT OBERLIN, INC.	1.310 AC.
8	KENDAL AT OBERLIN, INC.	1.320 AC.
9	KENDAL AT OBERLIN, INC.	49.980 AC.
10	JAMES & IVIE KENNEDY	0.960 AC.
11	CITY OF OBERLIN	4.790 AC.
11	LORAIN COUNTY METROPARKS	
12	CITY OF OBERLIN	17.800 AC.
13	CITY OF OBERLIN	32.780 AC.
14	COLLEGE PROPERTIES OF OBERLIN, INC.	6.000 AC.
15	OBERLIN COLLEGE	35.830 AC.
16	PETER M. SCHWINN	64.210 AC.
17	WILLOWBROOK FARMS SUBD. NO. 2 P.V. 22 P. 53	16.5553 AC.
18	LEEWARD HOLDINGS, LLC	0.420 AC.
19	LEEWARD HOLDINGS, LLC	0.410 AC.
20	WILLIAM SCOTT SMITH & LINDA SMITH	0.260 AC.
21	JOHN C. & LAURA M. HIERONYMUS	0.250 AC.
22	HAROLD STOUT & BEVERLY DOLYK	0.390 AC.
23	LEEWARD HOLDINGS, LLC	0.480 AC.
24	MARTIN LADD	1.080 AC.
25	ELAINE R. SMITH	2.350 AC.
26	WILLIAM J. & COLLEEN E. PRESTON	1.970 AC.
27	AL M. & ENOLIA TISDALE	1.330 AC.
28	ANNIE RUTH BECKMAN	6.780 AC.
29	DTW, LLC	7.110 AC.
30	WGI PROPERTIES, LLC	4.760 AC.
31	GAETANO & GIUSEPPINA CAMPEA	1.000 AC.
32	DAVID R. & MARY E. HENDERSON	0.410 AC.
33	5B STORAGE, LLC	3.500 AC.
34	CITY OF OBERLIN	60.080 AC.
35	CITY OF OBERLIN	4.690 AC.
36	OBERLIN RESERVE SUBD. NO. 1 P.V. 59 P. 29-31	21.0063 AC.
37	OBERLIN RESERVE CONDO. AMEND. #3 P.V. 79 P. 2-14	1.671 AC.
38	OBERLIN RESERVE SUBD. NO. 2 P.V. 74 P. 37-39	13.6335 AC.
39	OBERLIN RESERVE SUBD. NO. 3 P.V. 74 P. 40-42	12.9501 AC.
40	CITY OF OBERLIN D.V. 1093 P. 888	4.950 AC.
41	OBERLIN LAND COMPANY	8.630 AC.
42	WALMART REAL ESTATE BUSINESS TRUST	23.010 AC.
43	OBERLIN LAND COMPANY	3.040 AC.
44	DOREN & JOANN PORTMAN	0.280 AC.
45	DOREN & JOANN PORTMAN	1.510 AC.
46	CERTIFIED OIL CORP	0.930 AC.
47	CERTIFIED OIL CORP	0.1000 AC.
48	ROR LLC, ET AL.	2.150 AC.
49	TRIAD REALTY, LLC	1.700 AC.
50	TRIAD REALTY, LLC	8.300 AC.
51	LAND CONCEPTS COMPANY, INC.	11.000 AC.
52	LAKE SHORE RAILWAY ASSOCIATION, INC.	5.360 AC.
53	MARGARET A. KSIAZK	22.780 AC.
54	WEST PARK LIMITED, INC.	9.530 AC.
55	WEST PARK LIMITED, INC.	25.080 AC.
56	JAYNEE CLARK	4.180 AC.
57	CITY OF OBERLIN	3.48 AC.
58	THE OBERLIN GOLF CLUB CO.	55.110 AC.
59	THE OBERLIN GOLF CLUB CO.	0.900 AC.
60	LAKE SHORE RAILWAY ASSOCIATION, INC.	79.300 AC.
61	BERNADINE M. KETCH	5.540 AC.
62	DAVID P. RANSOME	4.28 AC.
63	CAROL VARNER	35.2 AC.
64	CERHART ASSOCIATION	3.62 AC.
65	W. CLAUD TURNBULL ETAL.	5.21 AC.
66	CALVIN T. HARPE	1.08 AC.
67	BEATRICE E. JENSEN	1.3 AC.
68	KENDAL AT OBERLIN	8.34 AC.

RECEIVED
CITY ENGINEERS
2008 JUN 13 A 10:30



* NOTE: DISTANCES SHOWN ARE FROM RECORD OR AS SCALED FROM LORAIN COUNTY AUDITOR'S MAPS ONLY AND ARE APPROXIMATE.

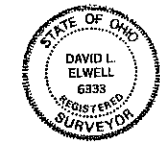
DATE	DESCRIPTION	BY
5/27/08	ADDITION OF ANNEXATION No. 08-18 AC CMS	ARR
9/27/07	ADDITIONS OF ANNEX. 07-54 AC CMS, 07-74 AC CMS, 06-105 AC CMS	BAJ

KS Associates, Inc.
260 Burns Road, Suite 100
Elyria, OH 44035
P 440 365 4730
F 440 365 4790
www.ksassociates.com

CORPORATION MAP OF THE CITY OF OBERLIN

ALL OF RUSSIA TWP. ORIGINAL LOTS 75, 76, 77, 84, 85, 86, 87, 95, 96, PART OF LOTS 66, 74, 78, 83, 88, 89, 93, 94, 99, 104, 105, 106, ALL OF PITTSFIELD TWP. ORIGINAL LOTS 13, 14 & PART OF LOTS 6, 7, 9, 12, 15, 16, & 26
CITY OF OBERLIN COUNTY OF LORAIN STATE OF OHIO

SHEET 1 OF 1
JOB NO. 06155



David L. Elwell 6-05-08
DAVID L. ELWELL, P.S.
REGISTERED SURVEYOR NO. 6333